

SARS-CoV-2 (COVID-19) nsp1 antibody

Cat. No. GTX135612

Host	Rabbit
Clonality	Polyclonal
Isotype	IgG
Applications	WB, ICC/IF, IHC-P (cell pellet)
Reactivity	SARS Coronavirus 2

References (5)

Package

100 µl, 25 µl

Applications

Application Note

*Optimal dilutions/concentrations should be determined by the researcher.

Suggested dilution	Recommended dilution
WB	1:1000-1:10000
ICC/IF	Assay dependent
IHC-P (cell pellet)	Assay dependent

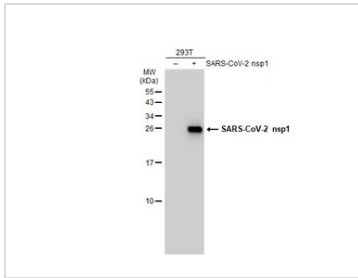
Not tested in other applications.

Properties

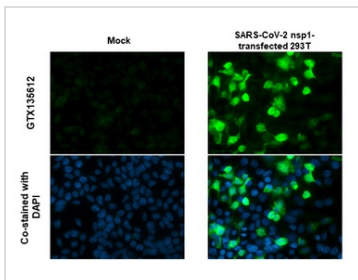
Form	Liquid
Buffer	PBS, 20% Glycerol
Preservative	0.025% ProClin 300
Storage	Store as concentrated solution. Centrifuge briefly prior to opening vial. For short-term storage (1-2 weeks), store at 4°C. For long-term storage, aliquot and store at -20°C or below. Avoid multiple freeze-thaw cycles.
Concentration	1 mg/ml (Please refer to the vial label for the specific concentration.)
Immunogen	Carrier-protein conjugated synthetic peptide encompassing a sequence within the C-terminus region of SARS-CoV-2 (COVID-19) nsp1 (Strain:Wuhan-Hu-1). The exact sequence is proprietary.
Purification	Purified by antigen-affinity chromatography.
Conjugation	Unconjugated
Note	For <i>In vitro</i> laboratory use only. Not for any clinical, therapeutic, or diagnostic use in humans or animals. Not for animal or human consumption.



For full product information, images and publications, please visit our [website](#).

DATA IMAGES

GTx135612 WB Image

Non-transfected (–) and transfected (+) 293T whole cell extracts (30 µg) were separated by 15% SDS-PAGE, and the membrane was blotted with SARS-CoV-2 nsp1 antibody (GTx135612) diluted at 1:5000. The HRP-conjugated anti-rabbit IgG antibody (GTx213110-01) was used to detect the primary antibody.

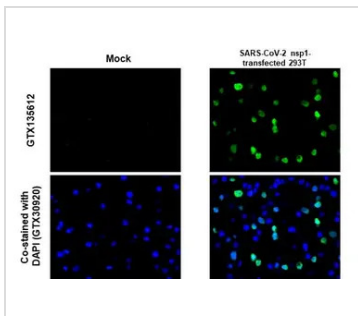

GTx135612 ICC/IF Image

SARS-CoV-2 (COVID-19) nsp1 antibody detects SARS-CoV-2 (COVID-19) nsp1 protein by immunofluorescent analysis.

Sample: Mock and transfected 293T cells were fixed in 4% paraformaldehyde at RT for 15 min.

Green: SARS-CoV-2 (COVID-19) nsp1 stained by SARS-CoV-2 (COVID-19) nsp1 antibody (GTx135612) diluted at 1:1000.

Blue: Fluoroshield with DAPI (GTx30920).


GTx135612 IHC-P (cell pellet) Image

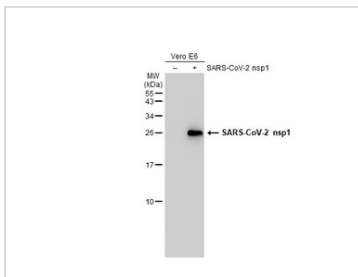
SARS-CoV-2 (COVID-19) nsp1 antibody detects SARS-CoV-2 (COVID-19) nsp1 protein at cytoplasm by immunohistochemical analysis.

Sample: Mock and SARS-CoV-2 (COVID-19) nsp1 transfected 293T cell FFPE Cell Pellet Block

Green: SARS-CoV-2 (COVID-19) nsp1 stained by SARS-CoV-2 (COVID-19) nsp1 antibody (GTx135612) diluted at 1:1000.

Blue: Fluoroshield with DAPI (GTx30920).

Antigen Retrieval: Citrate buffer, pH 6.0, 15 min


GTx135612 WB Image

Non-transfected (–) and transfected (+) Vero E6 whole cell extracts (30 µg) were separated by 15% SDS-PAGE, and the membrane was blotted with SARS-CoV-2 (COVID-19) nsp1 antibody (GTx135612) diluted at 1:5000. The HRP-conjugated anti-rabbit IgG antibody (GTx213110-01) was used to detect the primary antibody.



For full product information, images and publications, please visit our [website](https://www.genetex.com).