

SARS-CoV-2 (COVID-19) 3CLpro (nsp5) protein, His tag

Cat. No. GTX135648-pro

Applications	WB
Species	SARS Coronavirus 2

Package
500 µg, 100 µg

Applications

Calculated MW 34 kDa. ([Note](#))

Properties

Form Liquid

Buffer PBS

Preservative No preservatives

Storage Store as concentrated solution. Centrifuge briefly prior to opening vial. Aliquot and store at -20°C or below. Avoid multiple freeze-thaw cycles. For long-term storage after reconstitution, aliquot and store at -70°C or below. Do not vortex.

Concentration 2 mg/ml (Please refer to the vial label for the specific concentration).

Region/Sequence N-terminal His tagged full length protein of YP_009725301.1.

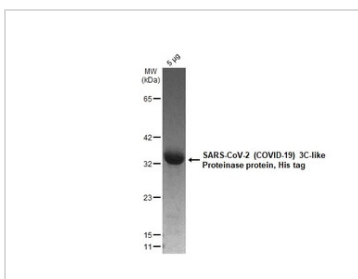
Expression System E. coli

Purity >90%

Conjugation Unconjugated

Note For *In vitro* laboratory use only. Not for any clinical, therapeutic, or diagnostic use in humans or animals. Not for animal or human consumption.

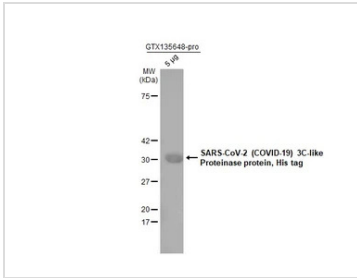
DATA IMAGES

**GTX135648-pro Image**

5 µg of GTX135648-pro SARS-CoV-2 (COVID-19) 3C-like Proteinase protein, His tag protein analyzed using SDS-PAGE and stained with coomassie blue and captured by monochrome camera.



For full product information, images and publications, please visit our [website](#).



GTX135648-pro WB Image

SARS-CoV-2 (COVID-19) 3C-like Proteinase protein, His tag (GTX135648-pro, 5 µg) was separated by 12% SDS-PAGE, and the membrane was blotted with 6X His tag antibody [GT359] (GTX628914) diluted at 1:5000. The HRP-conjugated anti-mouse IgG antibody (GTX213111-01) was used to detect the primary antibody.



For full product information, images and publications, please visit our [website](#).