

## MERS-CoV Nucleocapsid protein, DDDDK tag

**Cat. No. GTX135653-pro**

|                     |  |
|---------------------|--|
| <b>Applications</b> | ELISA  |
| <b>Species</b>      | Middle East respiratory syndrome coronavirus |

References ( 1 )

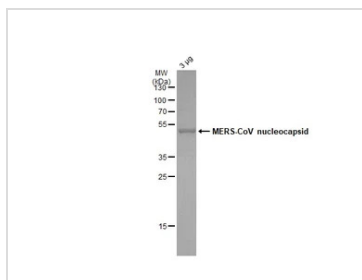
Package

100 µg

## Properties

|                          |   |
|--------------------------|---|
| <b>Form</b>              | Liquid  |
| <b>Buffer</b>            | PBS   |
| <b>Preservative</b>      | No preservatives  |
| <b>Storage</b>           | Store as concentrated solution. Centrifuge briefly prior to opening vial. Aliquot and store at -20°C or below. Avoid multiple freeze-thaw cycles. For long-term storage after reconstitution, aliquot and store at -70°C or below. Do not vortex. |
| <b>Concentration</b>     | 0.1 mg/ml (Please refer to the vial label for the specific concentration.)  |
| <b>Region/Sequence</b>   | C terminal -DDDDK tagged full length protein of AFS88943.1  |
| <b>Expression System</b> | HEK293 cells  |
| <b>Purity</b>            | >90%  |
| <b>Conjugation</b>       | Unconjugated  |
| <b>Note</b>              | For <i>In vitro</i> laboratory use only. Not for any clinical, therapeutic, or diagnostic use in humans or animals. Not for animal or human consumption.  |

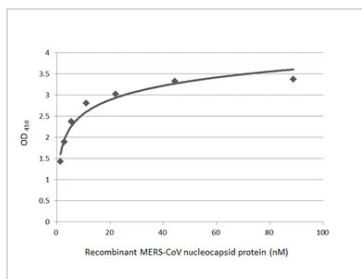
## DATA IMAGES

**GTX135653-pro Image**

3µg of GTX135653-pro MERS-CoV nucleocapsid protein analyzed using SDS-PAGE and stained with coomassie blue and captured by monochrome camera.



For full product information, images and publications, please visit our [website](https://www.genetex.com).



#### GTX135653-pro ELISA Image

Indirect ELISA analysis performed by coating plate with recombinant MERS-CoV Nucleocapsid protein (GTX135653-pro) (88.75-1.39 nM). Coated protein was probed with MERS-CoV Nucleoprotein antibody (GTX134868) (1 µg/mL). Rabbit IgG antibody (HRP) (GTX213110-01) (1:10000) was used to detect bound primary antibody.



For full product information, images and publications, please visit our [website](#).