

# Human ACE2 (ECD) protein, mouse IgG Fc tag (active)

**Cat. No. GTX135683-pro**

<b>Applications</b>	Binding Assay, ELISA, Functional Assay, Lateral Flow
<b>Species</b>	Human

★★★★★ Review ( 1 )

Package  
100 µg

## Properties

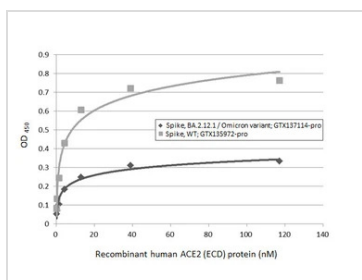
<b>Form</b>	Liquid
<b>Buffer</b>	PBS
<b>Preservative</b>	No preservative
<b>Storage</b>	Store as concentrated solution. Centrifuge briefly prior to opening vial. Aliquot and store at -20°C or below. Avoid multiple freeze-thaw cycles. For long-term storage after reconstitution, aliquot and store at -70°C or below. Do not vortex.
<b>Concentration</b>	0.8 mg/ml (Please refer to the vial label for the specific concentration.)
<b>Region/Sequence</b>	Human ACE2 of NP_068576.1 (Met1-Ser740) with the Fc region of mouse IgG1 at the C-terminus
<b>Expression System</b>	HEK293 cells
<b>Purity</b>	>90%
<b>Conjugation</b>	Unconjugated

## Note

For laboratory research use only. Not for any clinical, therapeutic, or diagnostic use in humans or animals. Not for animal or human consumption.

Purchasers shall not, and agree not to enable third parties to, analyze, copy, reverse engineer or otherwise attempt to determine the structure or sequence of the product.

## DATA IMAGES

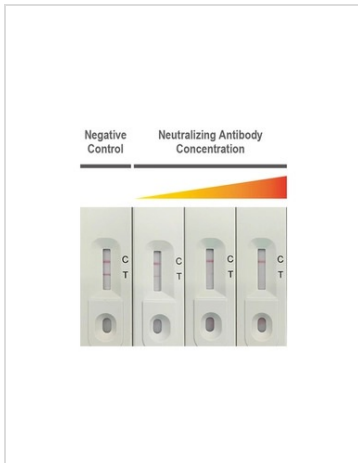


### GTX135683-pro Binding Assay Image

Functional ELISA analysis of immobilized recombinant Spike ECD protein(s) derived from different strains of SARS-CoV-2 virus (ie., Wild type; BA.2.12.1 Omicron variant) (coated at 2 µg/mL) binding to soluble recombinant Human ACE2 (ECD) protein, mouse IgG Fc tag (active) (GTX135683-pro) (0.16-117.19 nM). Bound protein was detected by Goat Anti-Mouse IgG antibody (HRP) (GTX213111-01) (1:10000).



For full product information, images and publications, please visit our [website](https://www.genetex.com).



### GTX135683-pro Lateral Flow Image

SARS-CoV-2 neutralizing antibody interferes with the binding of ACE2 and spike RBD proteins. The signal intensity of the test line (T) decreases due to competition by the neutralizing antibody, while the control line (C) demonstrates a valid test.

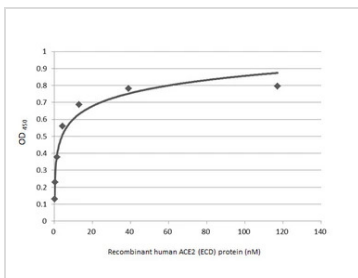
**Neutralizing Antibody:** Spike RBD antibody [HL1002] (GTX635791)

C Line:

**Detector:** Colloidal gold-conjugated human ACE2 (ECO) protein (GTX135683-pro) / **Capture:** Anti-human ACE2 antibody (GTX635897)

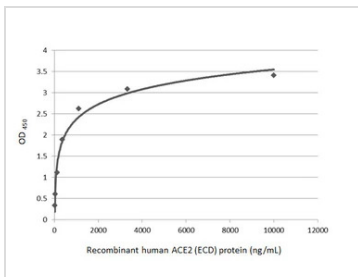
T Line:

**Detector:** Colloidal gold-conjugated human ACE2 (ECO) protein (GTX135683-pro) / **Capture:** SARS-CoV-2 Spike RBD protein



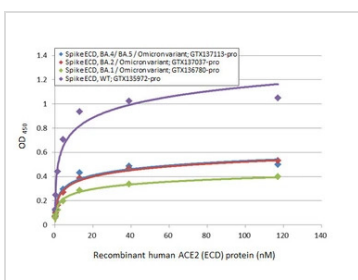
### GTX135683-pro Binding Assay Image

Functional ELISA analysis of immobilized recombinant SARS-CoV-2 (COVID-19) Spike (ECD) Protein, BA.2 / Omicron variant, His tag (GTX137037-pro) (coated at 2 µg/mL) binding to soluble recombinant Human ACE2 (ECD) protein, mouse IgG Fc tag (active) (GTX135683-pro) (0.16-117.19 nM). Bound protein was detected by Goat Anti-Mouse IgG antibody (HRP) (GTX213111-01) (1:10000).



### GTX135683-pro ELISA Image

Functional ELISA analysis of immobilized recombinant SARS-CoV-2 (COVID-19) Spike RBD protein, His tag (active) (GTX01546-pro) (coated at 2 µg/mL) binding to soluble recombinant Human ACE2 (ECD) protein, mouse IgG Fc tag (GTX135683-pro) (4.5-10000 ng/mL). Bound protein was detected by ACE2 antibody [N1N2], N-term (GTX101395) (0.5 µg/mL) and Rabbit IgG antibody (HRP) (GTX213110-01) (1:10000) detected bound primary antibody.



### GTX135683-pro Binding Assay Image

Functional ELISA analysis of immobilized recombinant Spike ECD protein(s) derived from different strains of SARS-CoV-2 virus (ie., Wild type; BA.1 Omicron variant; BA.2 Omicron variant; BA.4/BA.5 Omicron variant) (coated at 2 µg/mL) binding to soluble recombinant Human ACE2 (ECD) protein, mouse IgG Fc tag (active) (GTX135683-pro) (0.16-117.19 nM). Bound protein was detected by Goat Anti-Mouse IgG antibody (HRP) (GTX213111-01) (1:10000).



For full product information, images and publications, please visit our [website](https://www.genetex.com).