

## SARS-CoV-2 (COVID-19) Spike S2 (ECD) protein, mouse IgG Fc tag

**Cat. No. GTX135684-pro****Applications** WB, ELISA, Sandwich ELISA**Species** SARS Coronavirus 2**Package**

100 µg

## Applications

## Application Note

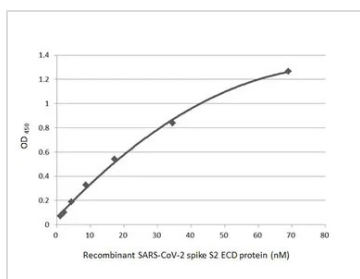
Recommended antibody pair for sandwich ELISA:

Capture: GTX632604, Detection: GTX635693 / GTX635910

## Properties

**Form** Liquid**Buffer** PBS**Preservative** No preservative**Storage** Store as concentrated solution. Centrifuge briefly prior to opening vial. Aliquot and store at -20°C or below. Avoid multiple freeze-thaw cycles. For long-term storage after reconstitution, aliquot and store at -70°C or below. Do not vortex.**Concentration** 0.1 mg/ml (Please refer to the vial label for the specific concentration.)**Region/Sequence** SARS-CoV-2 Spike of YP\_009724390.1 (686-1213 a.a, extracellular domain of Spike S2) with the Fc region of mouse IgG1 at the C-terminus**Expression System** HEK293 cells**Purity** >90%**Conjugation** Unconjugated**Note** For *In vitro* laboratory use only. Not for any clinical, therapeutic, or diagnostic use in humans or animals. Not for animal or human consumption.

## DATA IMAGES

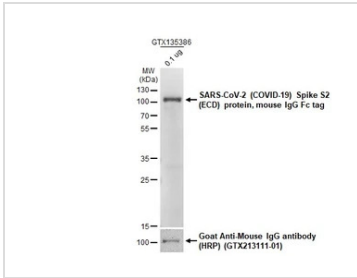


## GTX135684-pro ELISA Image

Indirect ELISA analysis performed by coating plate with recombinant SARS-CoV-2 (COVID-19) Spike S2 (ECD) protein, mouse IgG Fc tag (GTX135684-pro) (29.71-0.46 nM). Coated protein was probed with SARS-CoV-2 (COVID-19) Spike S2 antibody [HL237] (GTX635693) (1 µg/mL). Goat anti-rabbit IgG antibody (HRP) (GTX213110-01) (1:10000) was used to detect bound primary antibody.

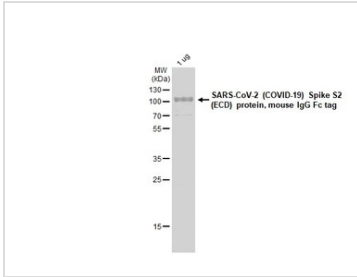


For full product information, images and publications, please visit our [website](#).



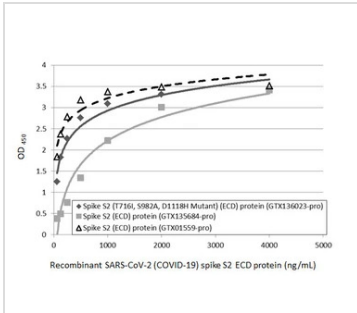
#### GTx135684-pro WB Image

SARS-CoV-2 (COVID-19) Spike S2 (ECD) protein, mouse IgG Fc tag (1 µg) was separated by 12% SDS-PAGE, and the membrane was blotted with SARS-CoV-2 (COVID-19) Spike S2 / S2' antibody (GTx135386) diluted at 1:2500. The HRP-conjugated anti-rabbit IgG antibody (GTx213110-01) was used to detect the primary antibody.



#### GTx135684-pro Image

1µg of GTx135684-pro SARS-CoV-2 (COVID-19) Spike S2 (ECD) protein, mouse IgG Fc tag protein analyzed using SDS-PAGE and stained with coomassie blue and captured by monochrome camera.



#### GTx135684-pro ELISA Image

Sandwich ELISA detection of recombinant SARS-CoV-2 (COVID-19) Spike S2 (T716I, S982A, D1118H Mutant) (ECD) protein, His tag (GTx136023-pro), SARS-CoV-2 (COVID-19) Spike S2 (ECD) protein, mouse IgG Fc tag (GTx135684-pro), and SARS-CoV-2 (COVID-19) Spike S2 (ECD) protein, human IgG Fc tag (GTx01559-pro) using SARS-CoV / SARS-CoV-2 (COVID-19) spike antibody [1A9] (GTx632604) as capture antibody at concentration of 5 µg/mL and SARS-CoV-2 (COVID-19) Spike S2 antibody [HL1038] (GTx635910) as detection antibody at concentration of 1 µg/mL. Rabbit IgG antibody (HRP) (GTx213110-01) was diluted at 1:10000 and used to detect the primary antibody.



For full product information, images and publications, please visit our [website](https://www.genetex.com).