

## SARS-CoV-2 (COVID-19) nsp8 antibody

Cat. No. GTX135729

Host	Rabbit
Clonality	Polyclonal
Isotype	IgG
Application	WB, IHC-P (cell pellet)
Reactivity	SARS Coronavirus 2

## Package

100 µl, 25 µl

## APPLICATION

## Application Note

\*Optimal dilutions/concentrations should be determined by the researcher.

Suggested dilution	Recommended dilution
WB	1:1000-1:10000
IHC-P (cell pellet)	Assay dependent

Not tested in other applications.

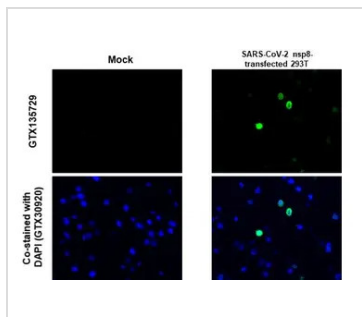
## PROPERTIES

Form	Liquid
Buffer	PBS, 20% Glycerol
Preservative	0.025% ProClin 300
Storage	Store as concentrated solution. Centrifuge briefly prior to opening vial. For short-term storage (1-2 weeks), store at 4°C. For long-term storage, aliquot and store at -20°C or below. Avoid multiple freeze-thaw cycles.
Concentration	1.02 mg/ml (Please refer to the vial label for the specific concentration.)
Immunogen	Recombinant protein encompassing a sequence within the N-terminus region of SARS-CoV-2 (COVID-19) nsp8. The exact sequence is proprietary.
Purification	Purified by affinity chromatography
Conjugation	Unconjugated
Note	<p>For laboratory research use only. Not for any clinical, therapeutic, or diagnostic use in humans or animals. Not for animal or human consumption.</p> <p>Purchasers shall not, and agree not to enable third parties to, analyze, copy, reverse engineer or otherwise attempt to determine the structure or sequence of the product.</p>



For full product information, images and publications, please visit our [website](#).

## DATA IMAGES



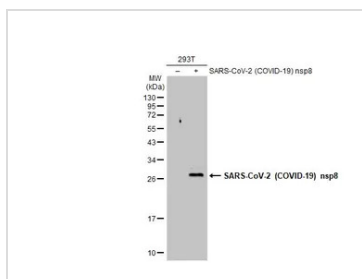
### GTX135729 IHC-P (cell pellet) Image

SARS-CoV-2 (COVID-19) nsp8 antibody detects SARS-CoV-2 (COVID-19) nsp8 protein at cytoplasm by immunohistochemical analysis.

Sample: Mock (GTX435670) and SARS-CoV-2 (COVID-19) nsp8 transfected 293T cell FFPE Cell Pellet Block. Green: SARS-CoV-2 (COVID-19) nsp8 stained by SARS-CoV-2 (COVID-19) nsp8 antibody (GTX135729) diluted at 1:1000.

Blue: Fluoroshield with DAPI (GTX30920).

Antigen Retrieval: Citrate buffer, pH 6.0, 15 min



### GTX135729 WB Image

Non-transfected (–) and transfected (+) 293T whole cell extracts (30 µg) were separated by 12% SDS-PAGE, and the membrane was blotted with SARS-CoV-2 (COVID-19) nsp8 antibody (GTX135729) diluted at 1:5000. The HRP-conjugated anti-rabbit IgG antibody (GTX213110-01) was used to detect the primary antibody.



For full product information, images and publications, please visit our [website](https://www.genetex.com).