

SARS-CoV-2 (COVID-19) nsp8 antibody

Cat. No. GTX135730

Host	Rabbit
Clonality	Polyclonal
Isotype	IgG
Application	WB, ICC/IF, IHC-P (cell pellet)
Reactivity	SARS Coronavirus 2

Package
100 µl, 25 µl

APPLICATION

Application Note

*Optimal dilutions/concentrations should be determined by the researcher.

Suggested dilution	Recommended dilution
WB	1:1000-1:10000
ICC/IF	Assay dependent
IHC-P (cell pellet)	Assay dependent

Not tested in other applications.

PROPERTIES

Form	Liquid
Buffer	PBS, 20% Glycerol
Preservative	0.025% ProClin 300
Storage	Store as concentrated solution. Centrifuge briefly prior to opening vial. For short-term storage (1-2 weeks), store at 4°C. For long-term storage, aliquot and store at -20°C or below. Avoid multiple freeze-thaw cycles.
Concentration	1 mg/ml (Please refer to the vial label for the specific concentration.)
Immunogen	Recombinant protein encompassing a sequence within the center region of SARS-CoV-2 (COVID-19) nsp8. The exact sequence is proprietary.
Purification	Purified by antigen-affinity chromatography.
Conjugation	Unconjugated

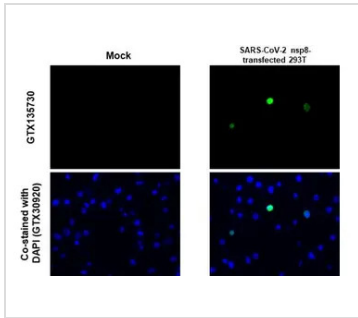
Note

For laboratory research use only. Not for any clinical, therapeutic, or diagnostic use in humans or animals. Not for animal or human consumption.

Purchasers shall not, and agree not to enable third parties to, analyze, copy, reverse engineer or otherwise attempt to determine the structure or sequence of the product.



For full product information, images and publications, please visit our [website](#).

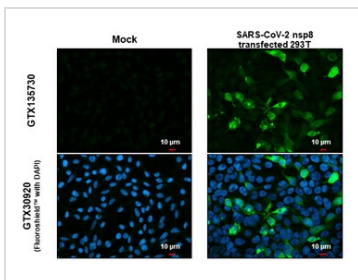
DATA IMAGES

GTX135730 IHC-P (cell pellet) Image

SARS-CoV-2 (COVID-19) nsp8 antibody detects SARS-CoV-2 (COVID-19) nsp8 protein at cytoplasm by immunohistochemical analysis.

Sample: Mock (GTX435670) and SARS-CoV-2 (COVID-19) nsp8 transfected 293T cell FFPE Cell Pellet Block. Green: SARS-CoV-2 (COVID-19) nsp8 stained by SARS-CoV-2 (COVID-19) nsp8 antibody (GTX135730) diluted at 1:1000.

Blue: Fluoroshield with DAPI (GTX30920).

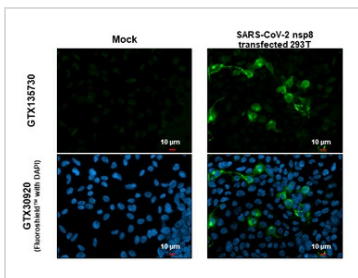
Antigen Retrieval: Citrate buffer, pH 6.0, 15 min


GTX135730 ICC/IF Image

SARS-CoV-2 (COVID-19) nsp8 antibody detects SARS-CoV-2 (COVID-19) nsp8 protein at cytoplasm by immunofluorescent analysis.

Sample: Mock and transfected transfected 293T cells were fixed in 4% paraformaldehyde at RT for 15 min.

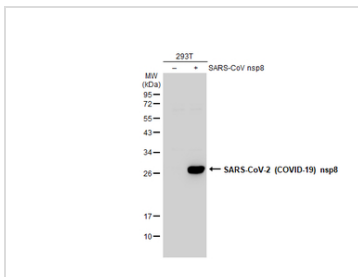
Green: SARS-CoV-2 (COVID-19) nsp8 stained by SARS-CoV-2 (COVID-19) nsp8 antibody (GTX135730) diluted at 1:2000.


GTX135730 ICC/IF Image

SARS-CoV-2 (COVID-19) nsp8 antibody detects SARS-CoV-2 (COVID-19) nsp8 protein at cytoplasm by immunofluorescent analysis.

Sample: Mock and transfected transfected 293T cells were fixed in 4% paraformaldehyde at RT for 15 min.

Green: SARS-CoV-2 (COVID-19) nsp8 stained by SARS-CoV-2 (COVID-19) nsp8 antibody (GTX135730) diluted at 1:2000.


GTX135730 WB Image

Non-transfected (–) and transfected (+) 293T whole cell extracts (30 μg) were separated by 12% SDS-PAGE, and the membrane was blotted with SARS-CoV-2 (COVID-19) nsp8 antibody (GTX135730) diluted at 1:5000. The HRP-conjugated anti-rabbit IgG antibody (GTX213110-01) was used to detect the primary antibody.



For full product information, images and publications, please visit our [website](https://www.genetex.com).