

Tau (phospho Thr217) antibody

Cat. No. GTX135775

Host	Rabbit
Clonality	Polyclonal
Isotype	IgG
Applications	WB, ICC/IF, IHC-P, ELISA
Reactivity	Human, Mouse, Rat

References (2)

Package

100 µl, 25 µl

Applications

Application Note

*Optimal dilutions/concentrations should be determined by the researcher.

Suggested dilution	Recommended dilution
WB	1:500-1:3000
ICC/IF	Assay dependent
IHC-P	Assay dependent
ELISA	Assay dependent

Not tested in other applications.

Calculated MW 79 kDa. ([Note](#))

Properties

Form	Liquid
Buffer	PBS, 1% BSA, 20% Glycerol
Preservative	0.025% ProClin 300
Storage	Store as concentrated solution. Centrifuge briefly prior to opening vial. For short-term storage (1-2 weeks), store at 4°C. For long-term storage, aliquot and store at -20°C or below. Avoid multiple freeze-thaw cycles.
Concentration	1.5 mg/ml (Please refer to the vial label for the specific concentration.)
Immunogen	Carrier-protein conjugated synthetic peptide surrounding phospho Thr217 of human Tau. The exact sequence is proprietary.
Purification	Purified by antigen-affinity chromatography.
Conjugation	Unconjugated

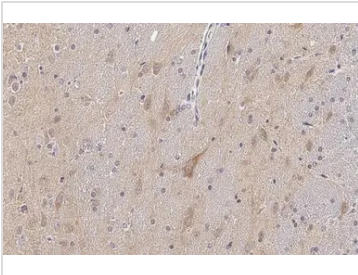


For full product information, images and publications, please visit our [website](#).

For laboratory research use only. Not for any clinical, therapeutic, or diagnostic use in humans or animals. Not for animal or human consumption.

Note
 Purchasers shall not, and agree not to enable third parties to, analyze, copy, reverse engineer or otherwise attempt to determine the structure or sequence of the product.

DATA IMAGES



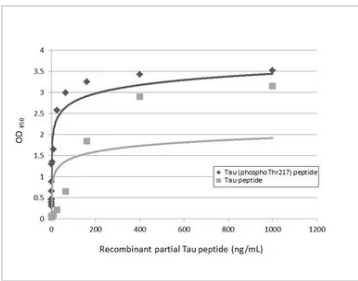
GTX135775 IHC-P Image

Tau (phospho Thr217) antibody detects Tau (phospho Thr217) protein at cytoplasm by immunohistochemical analysis.

Sample: Paraffin-embedded rat brain.

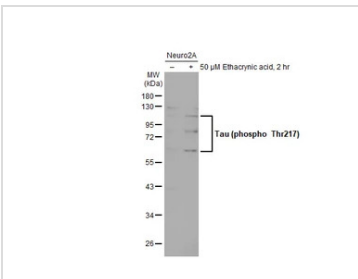
Tau (phospho Thr217) stained by Tau (phospho Thr217) antibody (GTX135775) diluted at 1:500.

Antigen Retrieval: Citrate buffer, pH 6.0, 15 min



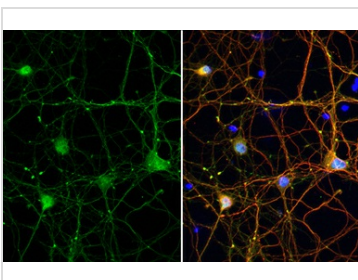
GTX135775 ELISA Image

Indirect ELISA analysis performed by coating plate with recombinant partial Tau peptide and Tau (phospho Thr217) peptide (1000-0.003 ng/mL). Coated protein was probed with Tau (phospho Thr217) antibody (GTX135775) (1 µg/mL). Goat anti-rabbit IgG antibody (HRP) (GTX213110-01) (1:10000) was used to detect bound primary antibody.



GTX135775 WB Image

Untreated (-) and treated (+) Neuro2A whole cell extracts (30 µg) were separated by 10% SDS-PAGE, and the membrane was blotted with Tau (phospho Thr217) antibody (GTX135775) diluted at 1:3000. The HRP-conjugated anti-rabbit IgG antibody (GTX213110-01) was used to detect the primary antibody.



GTX135775 ICC/IF Image

Tau (phospho Thr217) antibody detects Tau (phospho Thr217) protein at nucleus and cytoskeleton by immunofluorescent analysis.

Sample: DIV9 rat E18 primary cortical neuron cells were fixed in 4% paraformaldehyde at RT for 15 min.

Green: Tau (phospho Thr217) stained by Tau (phospho Thr217) antibody (GTX135775) diluted at 1:250.

Red: Tau, an axon marker, stained by Tau antibody [GT287] (GTX634809) diluted at 1:500.

Blue: Fluoroshield with DAPI (GTX30920).



For full product information, images and publications, please visit our [website](http://www.genetex.com).