

## TRF2 antibody [4A794.15]

**Cat. No. GTX13579**

<b>Host</b>	Mouse
<b>Clonality</b>	Monoclonal
<b>Isotype</b>	IgG1
<b>Applications</b>	WB, ICC/IF, IHC-P, IHC-Fr, FCM, IP, ELISA, ChIP assay, MS, PLA
<b>Reactivity</b>	Human, Mouse, Rat

**Package**  
100 µg

## Applications

**Application Note**

\*Optimal dilutions/concentrations should be determined by the researcher.

Suggested dilution	Recommended dilution
--------------------	----------------------

WB	2 - 4 µg/ml
ICC/IF	1:10 - 1:500
IHC-P	Assay dependent
IHC-Fr	5 µg/ml
FCM	0.1 µg / 10 <sup>6</sup> cells
IP	2 µg / 10 <sup>6</sup> cells
ELISA	2 µg/ml
ChIP assay	1:10 - 1:500
MS	Assay dependent
PLA	Assay dependent

**Note : Permeabilization step is needed.**

Not tested in other applications.

**Calculated MW** 60 kDa. ( [Note](#) )

## Properties

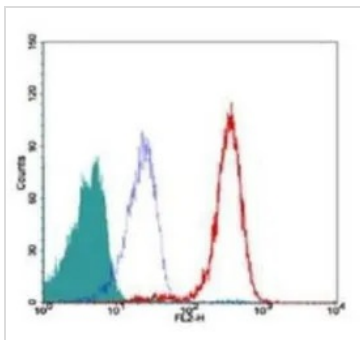
<b>Form</b>	Liquid
<b>Buffer</b>	PBS
<b>Preservative</b>	0.05% Sodium azide
<b>Storage</b>	Store as concentrated solution. Centrifuge briefly prior to opening vial. For short-term storage (1-2 weeks), store at 4°C. For long-term storage, aliquot and store at -20°C or below. Avoid multiple freeze-thaw cycles.
<b>Concentration</b>	1 mg/ml (Please refer to the vial label for the specific concentration.)



For full product information, images and publications, please visit our [website](#).

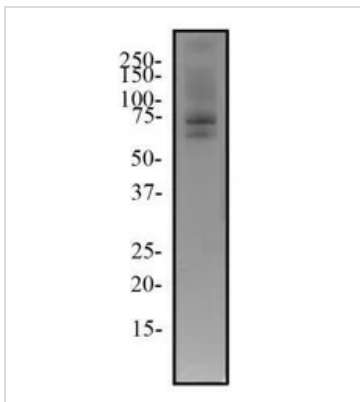
<b>Immunogen</b>	Baculovirus expressed whole length TRF2 protein was used for immunizing mice and splenocytes used to generate the hybridoma clone (NP_005643).
<b>Purification</b>	Protein G purified
<b>Conjugation</b>	Unconjugated
<b>Note</b>	For laboratory research use only. Not for any clinical, therapeutic, or diagnostic use in humans or animals. Not for animal or human consumption.  Purchasers shall not, and agree not to enable third parties to, analyze, copy, reverse engineer or otherwise attempt to determine the structure or sequence of the product.

DATA IMAGES



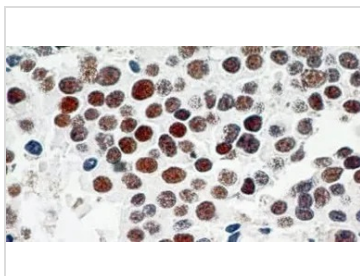
**GTX13579 FCM Image**

FACS (Intracellular staining) analysis of Jurkat cells using GTX13579 TRF2 antibody [4A794.15].  
 Red : Primary antibody  
 Blue : isotype control  
 Shaded histogram : Cells only control



**GTX13579 WB Image**

WB analysis of 3T3 cell lysate using GTX13579 TRF2 antibody [4A794.15].  
 Dilution : 2 µg/ml



**GTX13579 IHC-P Image**

IHC-P analysis of human urinary bladder carcinoma tissue using GTX13579 TRF2 antibody [4A794.15].  
 Dilution : 4 µg/ml  
 Antigen retrieval : 10 mM sodium citrate buffer, pH 6.0



For full product information, images and publications, please visit our [website](#).