

SARS-CoV-2 (COVID-19) Spike S1 protein, His tag (active)

Cat. No. GTX135817-pro
Applications Binding Assay, WB, ELISA, Sandwich ELISA

Species SARS Coronavirus 2

References (1)

Package

100 µg

Applications

Application Note

Recommended antibody pair for sandwich ELISA: Capture: GTX635807, Detection: GTX635792-01 / GTX635793-01/ GTX635791.

Please notice that GTX635791 needs to be conjugated to HRP to function as the detection antibody when paired with GTX635807. Please contact us for custom HRP-conjugated antibody.

Properties

Form Liquid

Buffer PBS

Preservative No preservatives

Storage Store as concentrated solution. Centrifuge briefly prior to opening vial. Aliquot and store at -20°C or below. Avoid multiple freeze-thaw cycles. For long-term storage after reconstitution, aliquot and store at -70°C or below. Do not vortex.

Concentration 0.9 mg/ml (Please refer to the vial label for the specific concentration.)

Region/Sequence SARS-CoV-2 Spike of QHD43416.1 (1-685 a.a) with His tag at the C-terminus

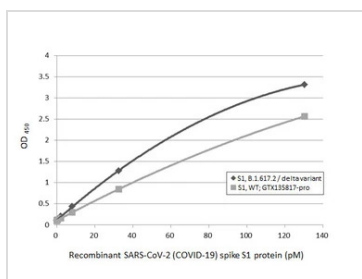
Expression System HEK293 cells

Purity >90%

Conjugation Unconjugated

Note For *In vitro* laboratory use only. Not for any clinical, therapeutic, or diagnostic use in humans or animals. Not for animal or human consumption.

DATA IMAGES



GTX135817-pro ELISA Image

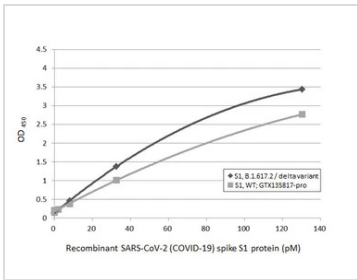
Sandwich ELISA detection of recombinant Spike S1 proteins derived from different strains of SARS-CoV-2 virus (Wild type or B.1.617.2 delta variant) using antibodies as below.

Capture: SARS-CoV-2 (COVID-19) Spike RBD antibody [HL1014] (GTX635807) (5 µg/mL)

Detection: SARS-CoV-2 (COVID-19) Spike RBD antibody [HL1003] (HRP) (GTX635792-01) (1 µg/mL).



For full product information, images and publications, please visit our [website](https://www.genetex.com).

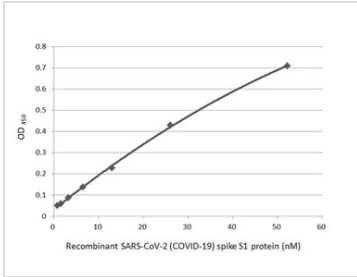


GTX135817-pro ELISA Image

Sandwich ELISA detection of recombinant Spike S1 proteins derived from different strains of SARS-CoV-2 virus (Wild type or B.1.617.2 delta variant) using antibodies as below.

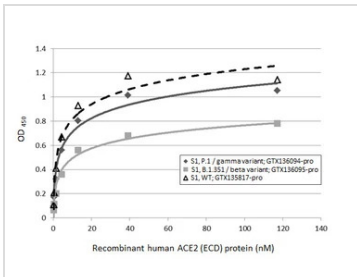
Capture: SARS-CoV-2 (COVID-19) Spike RBD antibody [HL1014] (GTX635807) (5 µg/mL)

Detection: SARS-CoV-2 (COVID-19) Spike RBD antibody [HL1004] (HRP) (GTX635793-01) (1 µg/mL).



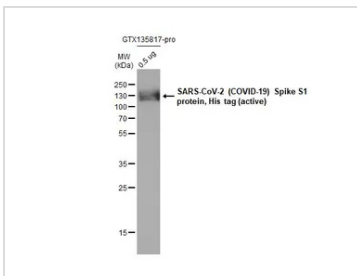
GTX135817-pro ELISA Image

Indirect ELISA analysis performed by coating plate with recombinant SARS-CoV-2 (COVID-19) Spike S1 protein, His tag (active) (GTX135817-pro) (52.15-0.81 nM). Coated protein was probed with SARS-CoV-2 (COVID-19) Spike S1 antibody [HL134] (GTX635671) (1 µg/mL). Goat anti-rabbit IgG antibody (HRP) (GTX213110-01) (1:10000) was used to detect bound primary antibody.



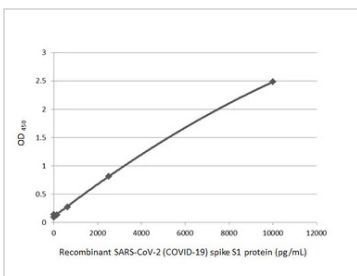
GTX135817-pro Binding Assay Image

Functional ELISA analysis of immobilized recombinant Spike S1 protein(s) derived from different strains of SARS-CoV-2 virus (ie., Wild type; B.1.351 beta variant; P.1 gamma variant) (coated at 2 µg/mL) binding to soluble recombinant Human ACE2 (ECD) protein, mouse IgG Fc tag (active) (GTX135683-pro) (0.16-117.19 nM). Bound protein was detected by Goat Anti-Mouse IgG antibody (HRP) (GTX213111-01) (1:10000).



GTX135817-pro WB Image

SARS-CoV-2 (COVID-19) Spike S1 protein, His tag (active) protein (GTX135817-pro, 0.5 µg) was separated by 12% SDS-PAGE, and the membrane was blotted with the SARS-CoV-2 (COVID-19) Spike RBD antibody [HL257] (GTX635692) diluted at 1:5000.



GTX135817-pro ELISA Image

Sandwich ELISA detection of recombinant SARS-CoV-2 (COVID-19) Spike S1 protein, His tag (active) (GTX135817-pro) using SARS-CoV-2 (COVID-19) Spike RBD antibody [HL1014] (GTX635807) as capture antibody at concentration of 5 µg/mL and SARS-CoV-2 (COVID-19) Spike RBD antibody [HL1003] (HRP) (GTX635792-01) as detection antibody at concentration of 1 µg/mL.



For full product information, images and publications, please visit our [website](https://www.genetex.com).