

## Influenza B virus Nucleoprotein antibody

Cat. No. GTX135819

Host	Rabbit
Clonality	Polyclonal
Isotype	IgG
Applications	WB, ICC/IF, IHC-P, IHC-P (cell pellet)
Reactivity	Influenza B virus

References ( 1 )

Package

100 µl, 25 µl

## Applications

## Application Note

\*Optimal dilutions/concentrations should be determined by the researcher.

Suggested dilution	Recommended dilution
WB	1:5000-1:110000
ICC/IF	Assay dependent
IHC-P	Assay dependent
IHC-P (cell pellet)	Assay dependent

Not tested in other applications.

## Properties

Form	Liquid
Buffer	PBS, 20% Glycerol
Preservative	0.025% ProClin 300
Storage	Store as concentrated solution. Centrifuge briefly prior to opening vial. For short-term storage (1-2 weeks), store at 4°C. For long-term storage, aliquot and store at -20°C or below. Avoid multiple freeze-thaw cycles.
Concentration	1 mg/ml (Please refer to the vial label for the specific concentration.)
Immunogen	Recombinant protein encompassing a sequence within the C-terminus region of Influenza B virus Nucleoprotein (B/Victoria/02/1987). The exact sequence is proprietary.
Purification	Purified by antigen-affinity chromatography.
Conjugation	Unconjugated

## Note

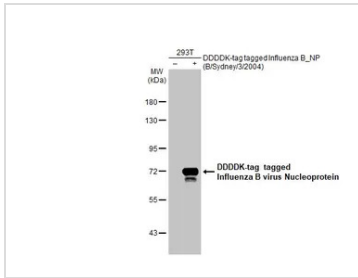
For laboratory research use only. Not for any clinical, therapeutic, or diagnostic use in humans or animals. Not for animal or human consumption.

Purchasers shall not, and agree not to enable third parties to, analyze, copy, reverse engineer or otherwise attempt to determine the structure or sequence of the product.



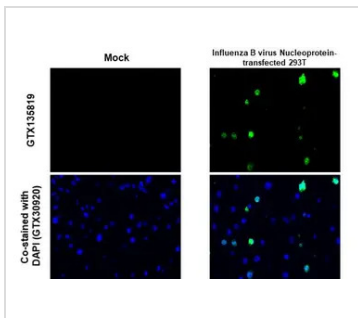
For full product information, images and publications, please visit our [website](#).

## DATA IMAGES



### GTX135819 WB Image

Non-transfected (–) and transfected (+) 293T whole cell extracts (30 µg) were separated by 7.5% SDS-PAGE, and the membrane was blotted with Influenza B virus Nucleoprotein antibody (GTX135819) diluted at 1:110000. The HRP-conjugated anti-rabbit IgG antibody (GTX213110-01) was used to detect the primary antibody.



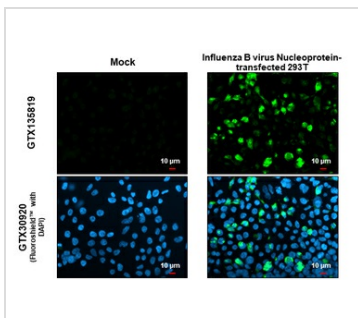
### GTX135819 IHC-P (cell pellet) Image

Influenza B virus Nucleoprotein antibody detects Influenza B virus Nucleoprotein protein at cytoplasm by immunohistochemical analysis.

Sample: Mock (GTX435670) and Influenza B virus Nucleoprotein transfected 293T cell FFPE Cell Pellet Block. Green: Influenza B virus Nucleoprotein stained by Influenza B virus Nucleoprotein antibody (GTX135819) diluted at 1:1000.

Blue: Fluoroshield with DAPI (GTX30920).

Antigen Retrieval: Citrate buffer, pH 6.0, 15 min



### GTX135819 ICC/IF Image

Influenza B virus Nucleoprotein antibody detects Influenza B virus Nucleoprotein protein at cytoplasm by immunofluorescent analysis.

Sample: Mock and transfected 293T cells were fixed in 4% paraformaldehyde at RT for 15 min.

Green: Influenza B virus Nucleoprotein stained by Influenza B virus Nucleoprotein antibody (GTX135819) diluted at 1:500.

Blue: Fluoroshield with DAPI (GTX30920).

Scale bar= 10µm.



For full product information, images and publications, please visit our [website](https://www.genetex.com).