

# Caspase 3 antibody [31A1067]

**Cat. No. GTX13585**

<b>Host</b>	Mouse
<b>Clonality</b>	Monoclonal
<b>Isotype</b>	IgG1
<b>Application</b>	WB, ICC/IF, IHC-P, IHC-Fr, FACS, EM, MS
<b>Reactivity</b>	Human, Mouse, Rat, Hamster, Pig

Reference ( 2 )

Package

100 µg

## APPLICATION

### Application Note

\*Optimal dilutions/concentrations should be determined by the researcher.

Suggested dilution	Recommended dilution
WB	1 - 5 µg/ml
ICC/IF	Assay dependent
IHC-P	1:10 - 1:500
IHC-Fr	1:10 - 1:500
FACS	Assay dependent
EM	Assay dependent
MS	Assay dependent

Not tested in other applications.

**Calculated MW** 32 kDa. ( [Note](#) )

### Product Note

The antibody detects both pro Caspase-3 (~32 kDa) and the large subunit of the active/cleaved form (~14-21 kDa) of Caspase-3. The large subunit of the cleaved form may appear as one or two or even as a stack of bands depending on the presence or absence of the Caspase-3 pro-domain. It is highly recommended that a maximum sensitivity ECL substrate (Femto sensitive) be used for efficient detection of this antibody in Western blot applications.

## PROPERTIES

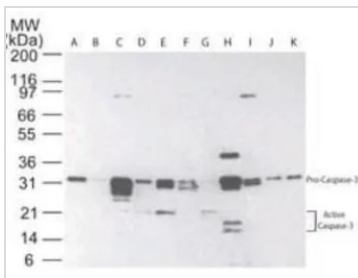
<b>Form</b>	Liquid
<b>Buffer</b>	PBS
<b>Preservative</b>	0.05% Sodium azide
<b>Storage</b>	Store as concentrated solution. Centrifuge briefly prior to opening vial. For short-term storage (1-2 weeks), store at 4°C. For long-term storage, aliquot and store at -20°C or below. Avoid multiple freeze-thaw cycles.
<b>Concentration</b>	1 mg/ml (Please refer to the vial label for the specific concentration.)



For full product information, images and publications, please visit our [website](#).

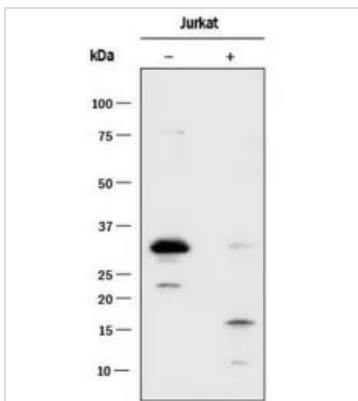
<b>Immunogen</b>	Full-length recombinant human caspase-3 protein was used as immunogen. The antibody recognizes an epitope in the large domain subunit of Caspase-3. As such it will recognize pro Caspase-3 and the large subunit cleavage fragment.
<b>Purification</b>	Protein G purified
<b>Conjugation</b>	Unconjugated
<b>Note</b>	For laboratory research use only. Not for any clinical, therapeutic, or diagnostic use in humans or animals. Not for animal or human consumption.  Purchasers shall not, and agree not to enable third parties to, analyze, copy, reverse engineer or otherwise attempt to determine the structure or sequence of the product.

#### DATA IMAGES



#### GTx13585 WB Image

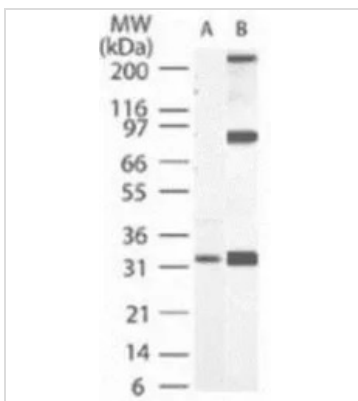
WB analysis of human (A) brain, (B) heart, (C) intestine, (D) kidney, (E) liver, (F) lung, (G) muscle, (H) stomach, (I) spleen, (J) ovary, and (K) testis tissue lysate using GTx13585 Caspase 3 antibody [31A1067].



#### GTx13585 WB Image

WB analysis of Jurkat cell lysate untreated (-) or treated (+) with Etoposide using GTx13585 Caspase 3 antibody [31A1067].

Dilution : 1 µg/ml



#### GTx13585 WB Image

WB analysis of (A) RAW264.7 and (B) NIH-3T3 cell lysate using GTx13585 Caspase 3 antibody [31A1067].

Dilution : 32 µg/ml



For full product information, images and publications, please visit our [website](https://www.genetex.com).