

## Influenza B virus Nucleoprotein (B/Sydney/3/2004), DDDDK Tag

## Cat. No. GTX135867-pro

**Applications** ELISA, Lateral Flow, Sandwich ELISA**Species** Influenza B virus

References ( 2 )

★★★★★ Review ( 2 )

Package

100 µg

## Applications

## Application Note

Recommended antibody pairs for sandwich ELISA:

Capture : GTX636100 / GTX636099 / GTX636194, Detection : GTX636099 / GTX636100 / GTX636194 ; Capture: GTX629882 / GTX629883, Detection : GTX128539, or Capture : GTX128539, Detection : GTX629882

Please notice that detection antibodies need to be conjugated to HRP when paired with capture antibodies. Please contact us for custom HRP-conjugated antibody.

Recommended antibody pairs for Lateral Flow:

Capture : GTX636099 / GTX636100 / GTX636194, Detection: GTX636100 / GTX636099

Please notice that the detection antibodies need to be conjugated to Gold to function when paired with capture antibodies. Please contact us for custom Gold-conjugated antibody.

## Properties

**Form** Liquid**Buffer** 90mM Tris, 1M Arginine**Preservative** No preservatives**Storage** Store as concentrated solution. Centrifuge briefly prior to opening vial. Aliquot and store at -20°C or below. Avoid multiple freeze-thaw cycles. For long-term storage after reconstitution, aliquot and store at -70°C or below. Do not vortex.**Concentration** 0.8 mg/ml (Please refer to the vial label for the specific concentration.)**Region/Sequence** DDDDK tagged full length Nucleoprotein protein of Influenza B virus (B/Sydney/3/2004) (AGX16066)**Expression System** HEK293 cells**Purity** >90%**Conjugation** Unconjugated

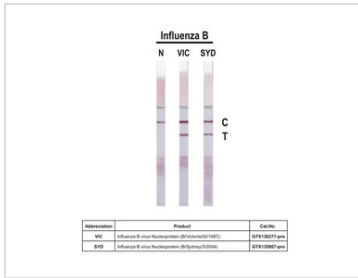
## Note

For laboratory research use only. Not for any clinical, therapeutic, or diagnostic use in humans or animals. Not for animal or human consumption.

Purchasers shall not, and agree not to enable third parties to, analyze, copy, reverse engineer or otherwise attempt to determine the structure or sequence of the product.



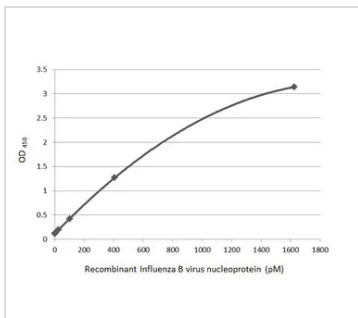
For full product information, images and publications, please visit our [website](#).

**DATA IMAGES**

**GTX135867-pro Lateral Flow Image**

Detection of recombinant influenza B virus nucleoproteins of the indicated strains by lateral flow assay using the recombinant rabbit monoclonal antibody pair.

**Capture:** Influenza B virus Nucleoprotein antibody [HL1069] (GTX636100)

**Detection:** Influenza B virus Nucleoprotein antibody [HL1068] (GTX636099)

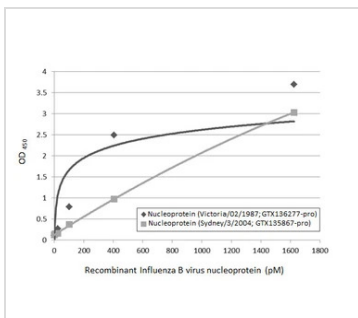

**GTX135867-pro Image**

Sandwich ELISA detection of recombinant Influenza B virus Nucleoprotein (B/Sydney/3/2004), DDDDK Tag (GTX135867-pro) using antibodies as below.

**Capture:** Influenza B virus Nucleoprotein antibody [HL1073] (GTX636194) (5 µg/mL)

**Detection:** HRP-conjugated Influenza B virus Nucleoprotein antibody [HL1069] (GTX636100) (1 µg/mL)

Please notice that GTX636100 needs to be conjugated to HRP to function as the detection antibody when paired with GTX636194. Please contact us for custom HRP-conjugated antibody.

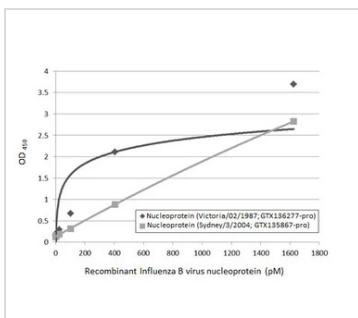

**GTX135867-pro ELISA Image**

Sandwich ELISA detection of recombinant nucleoproteins (NP) derived from different strains of Influenza B virus (i.e., B/Sydney/3/2004; B/Victoria/02/1987) using antibodies as below.

**Capture:** Influenza B virus Nucleoprotein antibody [HL1068] (GTX636099) (5 µg/mL)

**Detection:** HRP-conjugated Influenza B virus Nucleoprotein antibody [HL1069] (GTX636100) (1 µg/mL).

Please notice that GTX636100 needs to be conjugated to HRP to function as the detection antibody when paired with GTX636099. Please contact us for custom HRP-conjugated antibody.


**GTX135867-pro ELISA Image**

Sandwich ELISA detection of recombinant nucleoproteins (NP) derived from different strains of Influenza B virus (i.e., B/Sydney/3/2004; B/Victoria/02/1987) using antibodies as below.

**Capture:** Influenza B virus Nucleoprotein antibody [HL1073] (GTX636194) (5 µg/mL)

**Detection:** HRP-conjugated Influenza B virus Nucleoprotein antibody [HL1068] (GTX636099) (1 µg/mL).

Please notice that GTX636099 needs to be conjugated to HRP to function as the detection antibody when paired with GTX636194. Please contact us for custom HRP-conjugated antibody.



For full product information, images and publications, please visit our [website](https://www.genetex.com).