

Influenza A virus Nucleoprotein (A/WSN/1933 (H1N1)), DDDDK Tag

Cat. No. GTX135868-pro

Applications	ELISA, Lateral Flow, Sandwich ELISA
Species	Influenza A virus

References (2)

★★★★★ Review (2)

Package

100 µg

Applications

Application Note

Recommended antibody pairs for sandwich ELISA: Capture : GTX125989 / GTX642544 / GTX636247 / GTX636318 / GTX636282, Detection : GTX629633 or Capture : GTX629633, Detection : GTX125989.

Properties

Form	Liquid
Buffer	90mM Tris, 1M Arginine
Preservative	No preservatives
Storage	Store as concentrated solution. Centrifuge briefly prior to opening vial. Aliquot and store at -20°C or below. Avoid multiple freeze-thaw cycles. For long-term storage after reconstitution, aliquot and store at -70°C or below. Do not vortex.
Concentration	0.7 mg/ml (Please refer to the vial label for the specific concentration.)
Region/Sequence	DDDDK tagged full length protein of Influenza A virus (A/WSN/1933(H1N1))(ACF54602)
Expression System	HEK293 cells
Purity	>90%
Conjugation	Unconjugated

Note

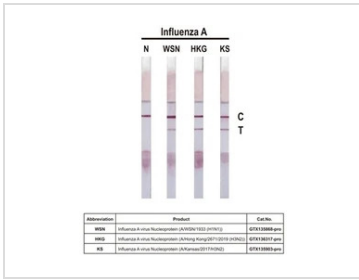
For laboratory research use only. Not for any clinical, therapeutic, or diagnostic use in humans or animals. Not for animal or human consumption.

Purchasers shall not, and agree not to enable third parties to, analyze, copy, reverse engineer or otherwise attempt to determine the structure or sequence of the product.



For full product information, images and publications, please visit our [website](#).

DATA IMAGES

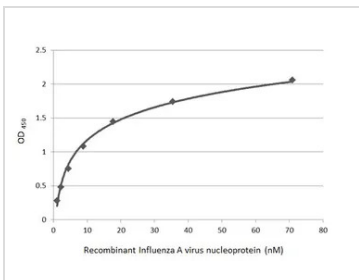


GTX135868-pro Lateral Flow Image

Detection of recombinant influenza A virus nucleoproteins of the indicated strains by lateral flow assay using the recombinant rabbit monoclonal antibody pair.

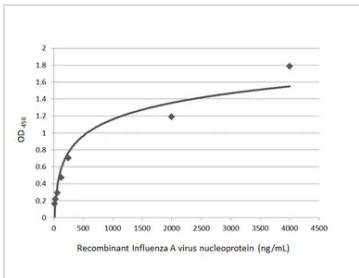
Capture: Influenza A virus Nucleoprotein antibody [HL1089] (GTX636247)

Detection: Influenza A virus Nucleoprotein antibody [HL1103] (GTX636318)



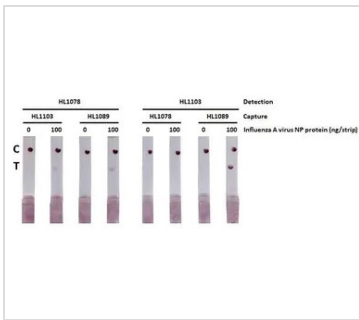
GTX135868-pro ELISA Image

Indirect ELISA analysis was performed by coating the plate with recombinant Influenza A virus Nucleoprotein (A/WSN/1933 (H1N1)), DDDDK Tag (GTX135868-pro) (70.93-1.11 nM). Coated protein was probed with Influenza A virus Nucleoprotein antibody [GT1236] (GTX629633) (1 µg/mL). Goat anti-mouse IgG antibody (HRP) (GTX213111-01) (1:10000) was used to detect the bound primary antibody.



GTX135868-pro ELISA Image

Sandwich ELISA detection of recombinant full-length Influenza A virus NP (nucleoprotein) protein, DDDDK tag (GTX135868-pro) using Influenza A virus NP (nucleoprotein) antibody [GT1236] (GTX629633) as capture antibody at concentration of 5 µg/mL and Influenza A virus NP (nucleoprotein) antibody (GTX125989) as detection antibody at concentration of 1 µg/mL. Rabbit IgG antibody (HRP) (GTX213110-01) was diluted at 1:10000 and used to detect the primary antibody.



GTX135868-pro Lateral Flow Image

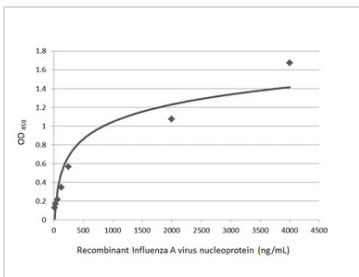
Detection of recombinant influenza A virus nucleoprotein (NP) (A/WSN/1933 (H1N1)), DDDDK Tag (GTX135868-pro) by lateral flow assay using the indicated recombinant rabbit monoclonal antibody pairs.

HL1078 : Influenza A virus Nucleoprotein antibody [HL1078] (GTX636199)

HL1089 : Influenza A virus Nucleoprotein antibody [HL1089] (GTX636247)

HL1103 : Influenza A virus Nucleoprotein antibody [HL1103] (GTX636318)

Sample : Influenza A virus Nucleoprotein (A/WSN/1933 (H1N1)), DDDDK Tag (GTX135868-pro)



GTX135868-pro ELISA Image

Sandwich ELISA detection of recombinant full-length Influenza A virus NP (nucleoprotein) protein, DDDDK tag (GTX135868-pro) using Influenza A virus NP (nucleoprotein) antibody (GTX125989) as capture antibody at concentration of 5 µg/mL and Influenza A virus NP (nucleoprotein) antibody [GT1236] (GTX629633) as detection antibody at concentration of 1 µg/mL. Mouse IgG antibody (HRP) (GTX213111-01) was diluted at 1:10000 and used to detect the primary antibody.



For full product information, images and publications, please visit our [website](http://www.genetex.com).