

TRF2 antibody

Cat. No. GTX13589

Host	Goat
Clonality	Polyclonal
Isotype	IgG
Applications	WB, ICC/IF, IHC-P, IP, ChIP assay
Reactivity	Human, Mouse

Package
100 µg

Applications

Application Note

*Optimal dilutions/concentrations should be determined by the researcher.

Suggested dilution	Recommended dilution
WB	2 µg/ml
ICC/IF	1:20 - 1:1000
IHC-P	15 µg/ml
IP	2 µg/ 10 ⁶ cells
ChIP assay	1:20 - 1:1000

Not tested in other applications.

Properties

Form	Liquid
Buffer	PBS
Preservative	0.05% Sodium azide
Storage	Store as concentrated solution. Centrifuge briefly prior to opening vial. For short-term storage (1-2 weeks), store at 4°C. For long-term storage, aliquot and store at -20°C or below. Avoid multiple freeze-thaw cycles.
Concentration	1 mg/ml (Please refer to the vial label for the specific concentration.)
Immunogen	Baculovirus expressed His-tagged whole length TRF2 protein was used for immunizing goat (NP_005643).
Purification	Protein G purified
Conjugation	Unconjugated

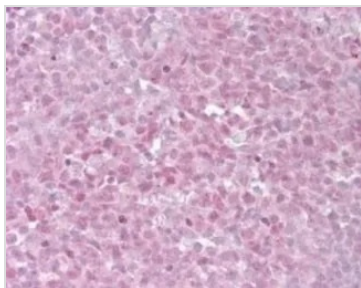
Note

For laboratory research use only. Not for any clinical, therapeutic, or diagnostic use in humans or animals. Not for animal or human consumption.

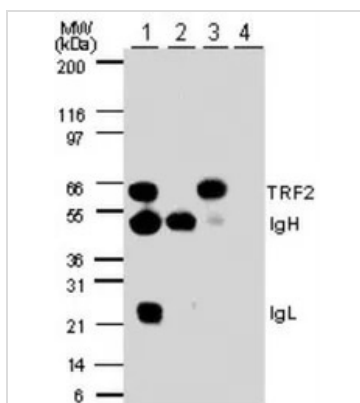
Purchasers shall not, and agree not to enable third parties to, analyze, copy, reverse engineer or otherwise attempt to determine the structure or sequence of the product.



For full product information, images and publications, please visit our [website](#).

DATA IMAGES

GTX13589 IHC-P Image

IHC-P analysis of human tonsil tissue using GTX13589 TRF2 antibody.
Dilution : 15 µg/ml


GTX13589 IP Image

IP analysis of HL-60 cell lysate using GTX13589 TRF2 antibody.

Lane 1 : IP with mouse anti-TRF2 antibody

Lane 2 : IP with control mouse IgG

Lane 3 : IP with goat anti-TRF2 antibody (GTX13589)

Lane 4 : IP with pre-immune goat IgG



For full product information, images and publications, please visit our [website](https://www.genetex.com).