

Influenza A virus Nucleoprotein (A/California/2009 (H1N1)), DDDDK Tag

Cat. No. GTX135904-pro**Applications** WB, ELISA, Lateral Flow, Sandwich ELISA**Species** Influenza A virus**Package**

100 µg

Applications

Application Note

Recommended antibody pairs for sandwich ELISA:

Capture : GTX636282 / GTX636199 / GTX636247, Detection : GTX636318 or Capture : GTX641086, Detection : GTX636199 / GTX636282

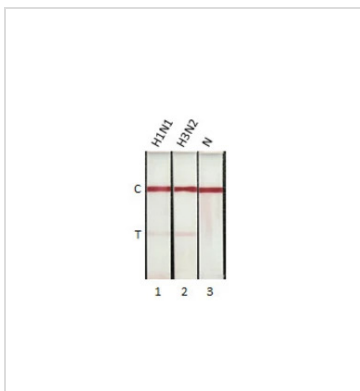
Please notice that detection antibodies need to be conjugated to HRP when paired with capture antibodies. Please contact us for custom HRP-conjugated antibody.

Properties

Form Liquid**Buffer** 90mM Tris, 1M Arginine**Preservative** No preservative**Storage** Store as concentrated solution. Centrifuge briefly prior to opening vial. Aliquot and store at -20°C or below. Avoid multiple freeze-thaw cycles. For long-term storage after reconstitution, aliquot and store at -70°C or below. Do not vortex.**Concentration** 0.9 mg/ml (Please refer to the vial label for the specific concentration.)**Region/Sequence** C-terminal DDDDK tagged full length NP (nucleoprotein) of Influenza A virus (A/California/2009/H1N1)(QFR38304)**Expression System** HEK293 cells**Purity** >90%**Conjugation** Unconjugated**Note** For *In vitro* laboratory use only. Not for any clinical, therapeutic, or diagnostic use in humans or animals. Not for animal or human consumption.

For full product information, images and publications, please visit our [website](#).

Date 2025 / 07 / 15 Page 1 of 2

DATA IMAGES

GTX135904-pro Lateral Flow Image

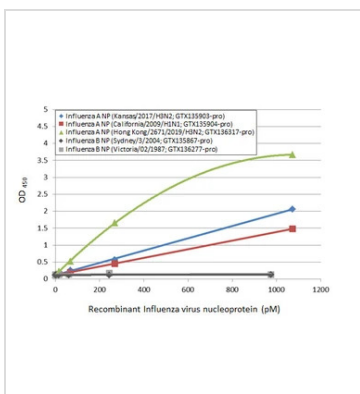
Detection of influenza A virus nucleoprotein by lateral flow assay using the monoclonal antibody pair.

Capture: Influenza A virus Nucleoprotein antibody (GTX636247 [HL1089])

Detection: Influenza A virus Nucleoprotein antibody (GTX637790 [HL1953])

Samples (1 ng) :

1. Influenza A virus Nucleoprotein (A/California/2009 (H1N1)) (GTX135904-pro)
2. Influenza A virus Nucleoprotein (A/Hong Kong/2671/2019 (H3N2)) (GTX136317-pro)
3. Lysis buffer

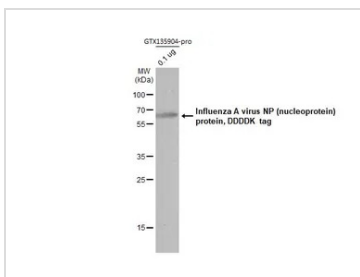

GTX135904-pro ELISA Image

Sandwich ELISA detection of recombinant nucleoproteins (NP) derived from different strains of Influenza A virus (i.e., A/Kansas/2017 (H3N2); A/California/2009 (H1N1); A/Hong Kong/2671/2019 (H3N2)) and Influenza B virus (i.e., B/Sydney/3/2004; B/Victoria/02/1987) using antibodies as below.

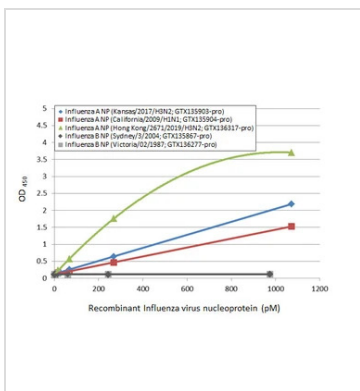
Capture: Influenza A virus NP (nucleoprotein) antibody [HL1089] (GTX636247) (5 µg/mL)

Detection: HRP-conjugated Influenza A virus NP (nucleoprotein) antibody [HL1103] (GTX636318) (1 µg/mL).

Please notice that GTX636318 needs to be conjugated to HRP to function as the detection antibody when paired with GTX636247. Please contact us for custom HRP-conjugated antibody.


GTX135904-pro WB Image

Influenza A virus NP (nucleoprotein) protein, DDDDK tag (GTX135904-pro, 0.1 µg) was separated by 12% SDS-PAGE, and the membrane was blotted with the DDDDK tag antibody diluted at 1:10000.


GTX135904-pro ELISA Image

Sandwich ELISA detection of recombinant nucleoproteins (NP) derived from different strains of Influenza A virus (i.e., A/Kansas/2017 (H3N2); A/California/2009 (H1N1); A/Hong Kong/2671/2019 (H3N2)) and Influenza B virus (i.e., B/Sydney/3/2004; B/Victoria/02/1987) using antibodies as below.

Capture: Influenza A virus NP (nucleoprotein) antibody [HL1078] (GTX636199) (5 µg/mL)

Detection: HRP-conjugated Influenza A virus NP (nucleoprotein) antibody [HL1103] (GTX636318) (1 µg/mL).

Please notice that GTX636318 needs to be conjugated to HRP to function as the detection antibody when paired with GTX636199. Please contact us for custom HRP-conjugated antibody.



For full product information, images and publications, please visit our [website](https://www.genetex.com).