

Ghrelin antibody

Cat. No. GTX135930

Host	Rabbit
Clonality	Polyclonal
Isotype	IgG
Application	WB, IHC-P
Reactivity	Human, Mouse, Rat

Package
100 µl, 25 µl

APPLICATION

Application Note

*Optimal dilutions/concentrations should be determined by the researcher.

Suggested dilution	Recommended dilution
WB	1:500-1:3000
IHC-P	Assay dependent

Not tested in other applications.

Calculated MW 13 kDa. ([Note](#))

PROPERTIES

Form	Liquid
Buffer	PBS, 20% Glycerol
Preservative	0.025% ProClin 300
Storage	Store as concentrated solution. Centrifuge briefly prior to opening vial. For short-term storage (1-2 weeks), store at 4°C. For long-term storage, aliquot and store at -20°C or below. Avoid multiple freeze-thaw cycles.
Concentration	1.38 mg/ml (Please refer to the vial label for the specific concentration.)
Immunogen	Carrier-protein conjugated synthetic peptide encompassing a sequence within the center region of human Ghrelin. The exact sequence is proprietary.
Purification	Purified by antigen-affinity chromatography.
Conjugation	Unconjugated

Note

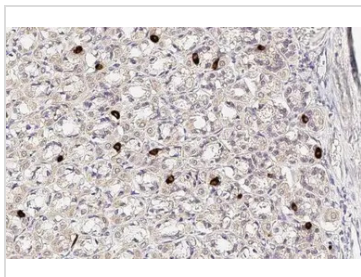
For laboratory research use only. Not for any clinical, therapeutic, or diagnostic use in humans or animals. Not for animal or human consumption.

Purchasers shall not, and agree not to enable third parties to, analyze, copy, reverse engineer or otherwise attempt to determine the structure or sequence of the product.



For full product information, images and publications, please visit our [website](#).

DATA IMAGES



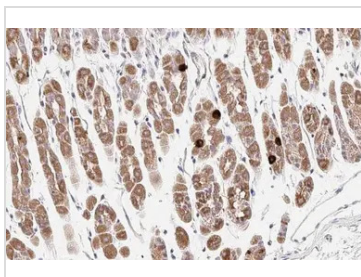
GTX135930 IHC-P Image

Ghrelin antibody detects secreted Ghrelin protein by immunohistochemical analysis.

Sample: Paraffin-embedded rat stomach.

Ghrelin stained by Ghrelin antibody (GTX135930) diluted at 1:500.

Antigen Retrieval: Citrate buffer, pH 6.0, 15 min



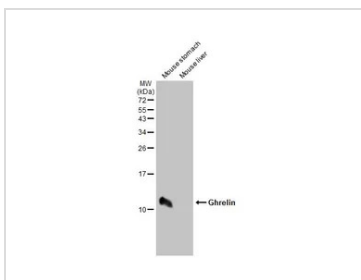
GTX135930 IHC-P Image

Ghrelin antibody detects secreted Ghrelin protein by immunohistochemical analysis.

Sample: Paraffin-embedded mouse stomach.

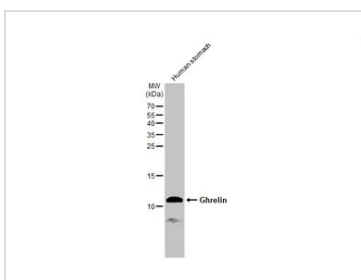
Ghrelin stained by Ghrelin antibody (GTX135930) diluted at 1:500.

Antigen Retrieval: Citrate buffer, pH 6.0, 15 min



GTX135930 WB Image

Various tissue extracts (50 μ g) were separated by 15% SDS-PAGE, and the membrane was blotted with Ghrelin antibody (GTX135930) diluted at 1:1000. The HRP-conjugated anti-rabbit IgG antibody (GTX213110-01) was used to detect the primary antibody.



GTX135930 WB Image

Human tissue extract (30 μ g) was separated by 15% SDS-PAGE, and the membrane was blotted with Ghrelin antibody (GTX135930) diluted at 1:1000. The HRP-conjugated anti-rabbit IgG antibody (GTX213110-01) was used to detect the primary antibody.



For full product information, images and publications, please visit our [website](https://www.genetex.com).