

SARS-CoV-2 (COVID-19) Spike (ECD) protein, His tag (active)

Cat. No. GTX135972-pro

| | |
|--------------|--|
| Applications | Binding Assay, WB, ELISA, Sandwich ELISA |
| Species | SARS Coronavirus 2 |

References (5)
Package
100 µg

Applications

Application Note

Recommended antibody pairs for sandwich ELISA:

Capture: GTX635807, Detection: GTX635792-01 / GTX635791, Capture: GTX635693, Detection: GTX636042, or Capture: GTX632604, , Detection: GTX635910.

Calculated MW 133 kDa. ([Note](#))

Properties

Form Liquid

Buffer PBS

Preservative No preservatives

Storage Store as concentrated solution. Centrifuge briefly prior to opening vial. Aliquot and store at -20°C or below. Avoid multiple freeze-thaw cycles. For long-term storage after reconstitution, aliquot and store at -70°C or below. Do not vortex.

Concentration 0.1 mg/ml (Please refer to the vial label for the specific concentration.)

Region/Sequence SARS-CoV-2 Spike of QHD43416.1 (1-1213 a.a, extracellular domain) with S1-S2 cleavage site mutations (682-685GSAS), 6 stabilizing mutations (HexaPro mutations, including F817P, A892P, A899P, A942P, K986P, and V987P) and T4 trimerization domain as well as a C-terminal His tag.

Expression System HEK293 cells

Purity >95%

Conjugation Unconjugated

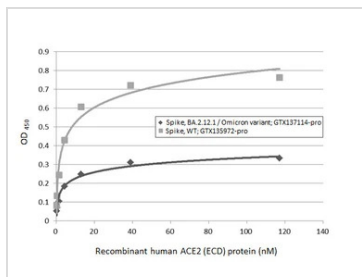
Note For laboratory research use only. Not for any clinical, therapeutic, or diagnostic use in humans or animals. Not for animal or human consumption.

Purchasers shall not, and agree not to enable third parties to, analyze, copy, reverse engineer or otherwise attempt to determine the structure or sequence of the product.

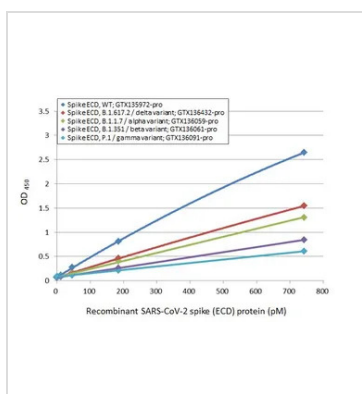


For full product information, images and publications, please visit our [website](#).

Date 2025 / 09 / 03 Page 1 of 2

DATA IMAGES

GTx135972-pro Binding Assay Image

Functional ELISA analysis of immobilized recombinant Spike ECD protein(s) derived from different strains of SARS-CoV-2 virus (ie., Wild type; BA.2.12.1 Omicron variant) (coated at 2 µg/mL) binding to soluble recombinant Human ACE2 (ECD) protein, mouse IgG Fc tag (active) (GTx135683-pro) (0.16-117.19 nM). Bound protein was detected by Goat Anti-Mouse IgG antibody (HRP) (GTx213111-01) (1:10000).

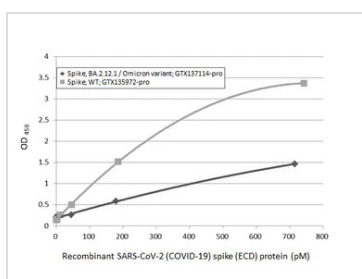

GTx135972-pro ELISA Image

Sandwich ELISA detection of recombinant Spike ECD protein(s) derived from different strains of SARS-CoV-2 virus (ie., Wild type; B.1.617.2 delta variant; B.1.1.7 alpha variant; B.1.351 beta variant; P.1 gamma variant) using antibodies as below.

Capture: SARS-CoV-2 (COVID-19) Spike RBD antibody [HL1014] (GTx635807) (5 µg/mL)

Detection: HRP-conjugated SARS-CoV-2 (COVID-19) Spike RBD antibody [HL1002] (GTx635791) (1 µg/mL)

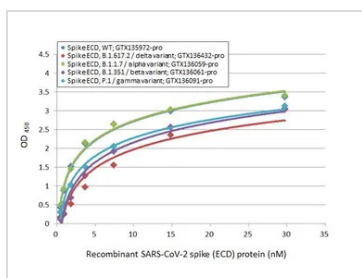
Please notice that GTx635791 needs to be conjugated to HRP to function as the detection antibody when paired with GTx635807. Please contact us for custom HRP-conjugated antibody.


GTx135972-pro ELISA Image

Sandwich ELISA detection of recombinant Spike ECD protein(s) derived from different strains of SARS-CoV-2 virus (ie., Wild type; BA.2.12.1 Omicron variant) using antibodies as below.

Capture: SARS-CoV-2 (COVID-19) Spike RBD antibody [HL1014] (GTx635807) (5 µg/mL)

Detection: SARS-CoV-2 (COVID-19) Spike RBD antibody [HL1003] (HRP) (GTx635792-01) (1 µg/mL)


GTx135972-pro ELISA Image

Indirect ELISA analysis performed by coating plate with recombinant Spike ECD protein(s) derived from different strains of SARS-CoV-2 virus (ie., Wild type; B.1.1.7 alpha variant; B.1.351 beta variant; P.1 gamma variant; B.1.617.2 delta variant) (29.71-0.46 nM). Coated protein was probed with SARS-CoV-2 (COVID-19) Spike RBD antibody [HL1002] (GTx635791) (1 µg/mL). Goat anti-rabbit IgG antibody (HRP) (GTx213110-01) (1:10000) was used to detect bound primary antibody.



For full product information, images and publications, please visit our [website](https://www.genetex.com).