

## Human IL6 protein, His tag

**Cat. No. GTX135982-pro****Applications** ELISA, Sandwich ELISA**Species** Human**Package**

100 µg

## Applications

**Application Note**

Recommended antibody pairs for sandwich ELISA: Capture : GTX636571 / GTX636573, Detection : GTX636473 / GTX638598.

## Properties

**Form** Liquid**Buffer** PBS**Preservative** No preservative

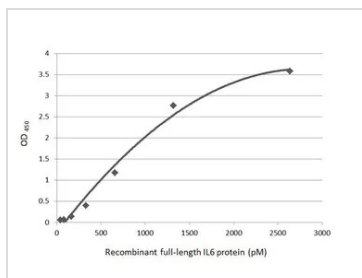
**Storage** Store as concentrated solution. Centrifuge briefly prior to opening vial. Aliquot and store at -20°C or below. Avoid multiple freeze-thaw cycles. For long-term storage after reconstitution, aliquot and store at -70°C or below. Do not vortex.

**Concentration** 1 mg/ml (Please refer to the vial label for the specific concentration.)**Region/Sequence** C-terminal His tagged Human IL-6 protein of NP\_000591.1.**Expression System** HEK293 cells**Purity** >95%**Conjugation** Unconjugated**Note**

For laboratory research use only. Not for any clinical, therapeutic, or diagnostic use in humans or animals. Not for animal or human consumption.

Purchasers shall not, and agree not to enable third parties to, analyze, copy, reverse engineer or otherwise attempt to determine the structure or sequence of the product.

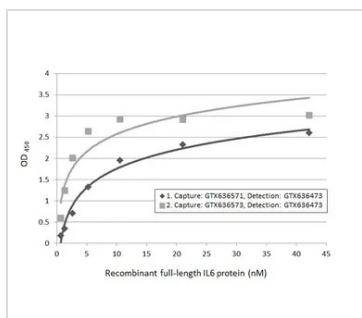
## DATA IMAGES

**GTX135982-pro ELISA Image**

Indirect ELISA analysis was performed by coating the plate with recombinant Human IL6 protein, His tag (GTX135982-pro) (2634.91-41.32 pM). Coated protein was probed with IL6 antibody [HL2389] (GTX638598) (1 µg/mL). Goat anti-rabbit IgG antibody (HRP) (GTX213110-01) (1:10000) was used to detect the bound primary antibody.



For full product information, images and publications, please visit our [website](https://www.genetex.com).


**GTX135982-pro ELISA Image**

Sandwich ELISA detection of Human IL6 protein, His tag (GTX135982-pro) using ELISA pairs below.

Pair 1:

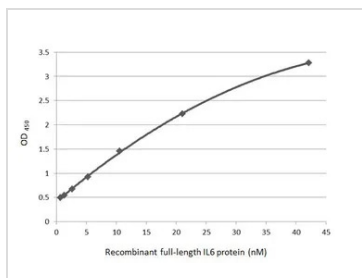
**Capture:** IL6 antibody [GT519-1] (GTX636573) (5 µg/mL)

**Detection:** IL6 antibody [HL1168] (GTX636473) (1 µg/mL)

Pair 2:

**Capture:** IL6 antibody [GT1535] (GTX636571) (5 µg/mL)

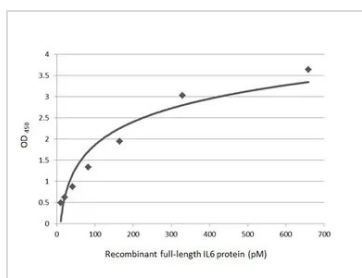
**Detection:** IL6 antibody [HL1168] (GTX636473) (1 µg/mL)


**GTX135982-pro ELISA Image**

Sandwich ELISA detection of recombinant Human IL6 protein, His tag (GTX135982-pro) using antibodies as below.

**Capture:** IL6 antibody [GT519-1] (GTX636573) (5 µg/mL)

**Detection:** IL6 antibody [HL2389] (GTX638598) (1 µg/mL)


**GTX135982-pro ELISA Image**

Sandwich ELISA detection of recombinant Human IL6 protein, His tag (GTX135982-pro) using antibodies as below.

**Capture:** IL6 antibody [GT1535] (GTX636571) (5 µg/mL)

**Detection:** IL6 antibody [HL2389] (GTX638598) (1 µg/mL)



For full product information, images and publications, please visit our [website](https://www.genetex.com).