

Apolipoprotein B antibody

Cat. No. GTX135994

Host	Rabbit
Clonality	Polyclonal
Isotype	IgG
Application	WB, IHC-P, ELISA
Reactivity	Human, Mouse

Package
100 µl, 25 µl

APPLICATION

Application Note

*Optimal dilutions/concentrations should be determined by the researcher.

Suggested dilution	Recommended dilution
WB	1:500-1:3000
IHC-P	Assay dependent
ELISA	Assay dependent

Not tested in other applications.

Calculated MW 516 kDa. ([Note](#))

PROPERTIES

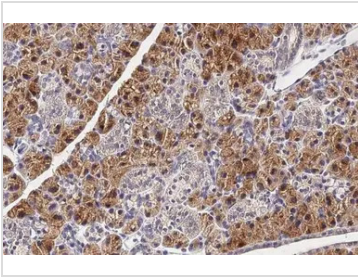
Form	Liquid
Buffer	PBS, 1% BSA, 20% Glycerol
Preservative	0.025% ProClin 300
Storage	Store as concentrated solution. Centrifuge briefly prior to opening vial. For short-term storage (1-2 weeks), store at 4°C. For long-term storage, aliquot and store at -20°C or below. Avoid multiple freeze-thaw cycles.
Concentration	0.16 mg/ml (Please refer to the vial label for the specific concentration.)
Immunogen	Carrier-protein conjugated synthetic peptide encompassing a sequence within the N-terminus region of human Apolipoprotein B. The exact sequence is proprietary.
Purification	Purified by antigen-affinity chromatography.
Conjugation	Unconjugated

Note For laboratory research use only. Not for any clinical, therapeutic, or diagnostic use in humans or animals. Not for animal or human consumption.

Purchasers shall not, and agree not to enable third parties to, analyze, copy, reverse engineer or otherwise attempt to determine the structure or sequence of the product.



For full product information, images and publications, please visit our [website](#).

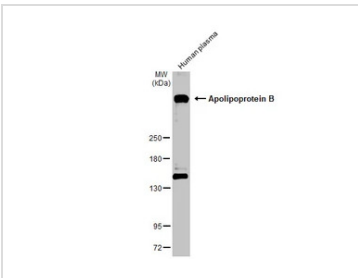
DATA IMAGES

GTX135994 IHC-P Image

Apolipoprotein B antibody detects secreted Apolipoprotein B protein by immunohistochemical analysis.

Sample: Paraffin-embedded mouse salivary gland.

Apolipoprotein B stained by Apolipoprotein B antibody (GTX135994) diluted at 1:500.

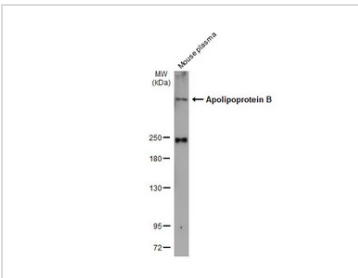
Antigen Retrieval: Citrate buffer, pH 6.0, 15 min


GTX135994 WB Image

Human plasma (30 µg) was separated by 5% SDS-PAGE, and the membrane was blotted with

Apolipoprotein B antibody (GTX135994) diluted at 1:1000. The HRP-conjugated anti-rabbit IgG antibody

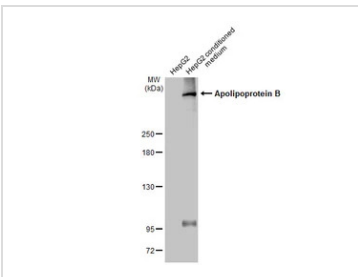
(GTX213110-01) was used to detect the primary antibody.


GTX135994 WB Image

Mouse plasma (30 µg) was separated by 5% SDS-PAGE, and the membrane was blotted with

Apolipoprotein B antibody (GTX135994) diluted at 1:1000. The HRP-conjugated anti-rabbit IgG antibody

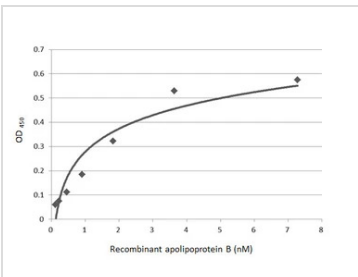
(GTX213110-01) was used to detect the primary antibody.


GTX135994 WB Image

HepG2 whole cell extract and conditioned medium (30 µg) were separated by 5% SDS-PAGE, and the

membrane was blotted with Apolipoprotein B antibody (GTX135994) diluted at 1:1000. The HRP-

conjugated anti-rabbit IgG antibody (GTX213110-01) was used to detect the primary antibody.


GTX135994 ELISA Image

Indirect ELISA analysis performed by coating plate with recombinant apolipoprotein B (7.27-0.11 nM).

Coated protein was probed with Apolipoprotein B antibody (GTX135994) (1 µg/mL). Goat anti-rabbit IgG

antibody (HRP) (GTX213110-01) (1:10000) was used to detect bound primary antibody.



For full product information, images and publications, please visit our [website](https://www.genetex.com).