

## Rad9 antibody [93A535]

**Cat. No. GTX13600**

<b>Host</b>	Mouse
<b>Clonality</b>	Monoclonal
<b>Isotype</b>	IgG1
<b>Applications</b>	WB, ICC/IF, IHC-P, IP
<b>Reactivity</b>	Human

**Package**  
100 µg

## Applications

**Application Note**

\*Optimal dilutions/concentrations should be determined by the researcher.

Suggested dilution	Recommended dilution
WB	1 - 2 µg/ml
ICC/IF	1:10 - 1:500
IHC-P	1:10 - 1:500
IP	1:10 - 1:500

Not tested in other applications.

**Calculated MW** 43 kDa. ([Note](#))

## Properties

<b>Form</b>	Liquid
<b>Buffer</b>	PBS, 0.05% BSA
<b>Preservative</b>	0.05% Sodium azide
<b>Storage</b>	Store as concentrated solution. Centrifuge briefly prior to opening vial. For short-term storage (1-2 weeks), store at 4°C. For long-term storage, aliquot and store at -20°C or below. Avoid multiple freeze-thaw cycles.
<b>Concentration</b>	0.5 mg/ml (Please refer to the vial label for the specific concentration.)
<b>Immunogen</b>	The antibody was raised against fusion protein of human full length Rad9.
<b>Purification</b>	Protein G purified
<b>Conjugation</b>	Unconjugated

**Note**

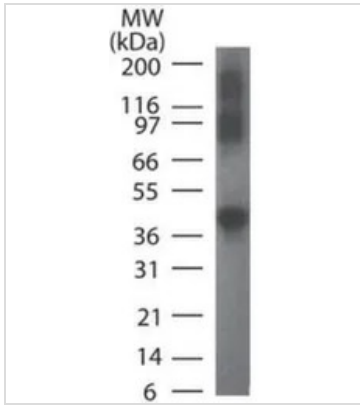
For laboratory research use only. Not for any clinical, therapeutic, or diagnostic use in humans or animals. Not for animal or human consumption.

Purchasers shall not, and agree not to enable third parties to, analyze, copy, reverse engineer or otherwise attempt to determine the structure or sequence of the product.



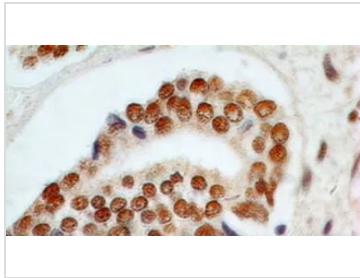
For full product information, images and publications, please visit our [website](#).

DATA IMAGES



**GTX13600 WB Image**

WB analysis of Rad9 recombinant protein using GTX13600 Rad9 antibody [93A535].  
Dilution : 2 µg/ml



**GTX13600 IHC-P Image**

IHC-P analysis of human prostate adenocarcinoma tissue using GTX13600 Rad9 antibody [93A535].  
Dilution : 5 µg/ml  
Antigen retrieval : 10 mM sodium citrate buffer, pH 6.0



For full product information, images and publications, please visit our [website](#).