

# SARS-CoV-2 (COVID-19) Spike S2 (ECD) Protein, B.1.1.7 / Alpha variant, His tag

**Cat. No. GTX136023-pro**

**Applications** WB, ELISA, Sandwich ELISA

**Species** SARS Coronavirus 2

**Package**

100 µg

## Applications

### Application Note

Recommended antibody pair for sandwich ELISA:

Capture: GTX632604, Detection: GTX635911 / GTX635910 / GTX635693

## Properties

**Form** Liquid

**Buffer** PBS

**Preservative** No preservative

**Storage** Store as concentrated solution. Centrifuge briefly prior to opening vial. Aliquot and store at -20°C or below. Avoid multiple freeze-thaw cycles. For long-term storage after reconstitution, aliquot and store at -70°C or below. Do not vortex.

**Concentration** 0.2 mg/ml (Please refer to the vial label for the specific concentration.)

**Region/Sequence** SARS-CoV-2 Spike of QHD43416.1 (686-1,213 a.a) with T716I, S982A and D1118H mutations, 6 stabilizing mutations (HexaPro mutations, including F817P, A892P, A899P, A942P, K986P, and V987P), and His tag at the C-terminus

**Expression System** HEK293 cells

**Purity** >95%

**Conjugation** Unconjugated

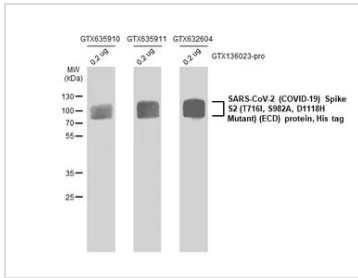
### Note

For laboratory research use only. Not for any clinical, therapeutic, or diagnostic use in humans or animals. Not for animal or human consumption.

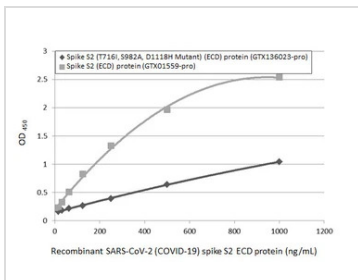
Purchasers shall not, and agree not to enable third parties to, analyze, copy, reverse engineer or otherwise attempt to determine the structure or sequence of the product.



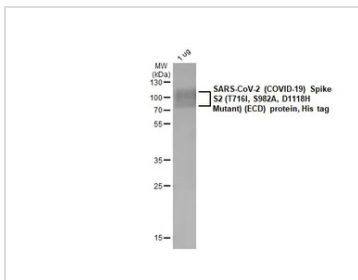
For full product information, images and publications, please visit our [website](#).

**DATA IMAGES**

**GTX136023-pro WB Image**

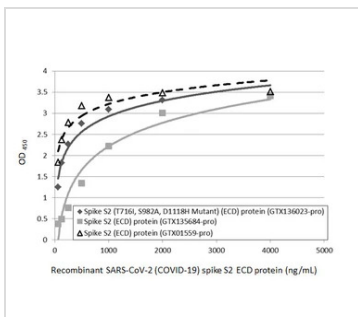
SARS-CoV-2 (COVID-19) Spike S2 (T716L, S982A, D1118H Mutant) (ECD) protein, His tag (GTX136023-pro, 0.2 µg) was separated by 12% SDS-PAGE, and the membrane were blotted with SARS-CoV-2 (COVID-19) Spike S2 antibody [HL1038] (GTX635910, left) diluted at 1:20000, SARS-CoV-2 (COVID-19) Spike S2 antibody [HL1039] (GTX635911, middle) diluted at 1:20000, and SARS-CoV / SARS-CoV-2 (COVID-19) spike antibody [1A9] (GTX632604, right) diluted at 1:5000.


**GTX136023-pro ELISA Image**

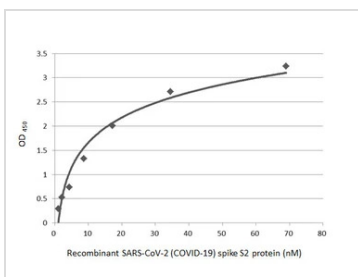
Sandwich ELISA detection of recombinant SARS-CoV-2 (COVID-19) Spike S2 (T716L, S982A, D1118H Mutant) (ECD) protein, His tag (GTX136023-pro) and SARS-CoV-2 (COVID-19) Spike S2 (ECD) protein, human IgG Fc tag (GTX01559-pro) using SARS-CoV / SARS-CoV-2 (COVID-19) spike antibody [1A9] (GTX632604) as capture antibody at concentration of 5 µg/mL and SARS-CoV-2 (COVID-19) Spike S2 antibody [HL1039] (GTX635911) as detection antibody at concentration of 1 µg/mL. Rabbit IgG antibody (HRP) (GTX213110-01) was diluted at 1:10000 and used to detect the primary antibody.


**GTX136023-pro Image**

1 µg of GTX136023-pro SARS-CoV-2 (COVID-19) Spike S2 (T716L, S982A, D1118H Mutant) (ECD) protein, His tag was analyzed using SDS-PAGE and stained with coomassie blue and captured by monochrome camera.


**GTX136023-pro ELISA Image**

Sandwich ELISA detection of recombinant SARS-CoV-2 (COVID-19) Spike S2 (T716L, S982A, D1118H Mutant) (ECD) protein, His tag (GTX136023-pro), SARS-CoV-2 (COVID-19) Spike S2 (ECD) protein, mouse IgG Fc tag (GTX135684-pro), and SARS-CoV-2 (COVID-19) Spike S2 (ECD) protein, human IgG Fc tag (GTX01559-pro) using SARS-CoV / SARS-CoV-2 (COVID-19) spike antibody [1A9] (GTX632604) as capture antibody at concentration of 5 µg/mL and SARS-CoV-2 (COVID-19) Spike S2 antibody [HL1038] (GTX635910) as detection antibody at concentration of 1 µg/mL. Rabbit IgG antibody (HRP) (GTX213110-01) was diluted at 1:10000 and used to detect the primary antibody.


**GTX136023-pro ELISA Image**

Sandwich ELISA detection of recombinant SARS-CoV-2 (COVID-19) Spike S2 Protein, B.1.1.7 / Alpha variant, His tag (GTX136023-pro) using antibodies as below.

**Capture:** SARS-CoV / SARS-CoV-2 (COVID-19) spike antibody [1A9] (GTX632604) (5 µg/mL)

**Detection:** SARS-CoV-2 (COVID-19) Spike S2 / S2' antibody [HL1039] (GTX635911) (1 µg/mL)



For full product information, images and publications, please visit our [website](https://www.genetex.com).