

# SARS-CoV-2 (COVID-19) Spike RBD Protein, B.1.1.7 / Alpha variant, mouse Fc tag (active)

**Cat. No. GTX136024-pro**

**Application** Binding Assay, ELISA, Sandwich ELISA

**Species** SARS Coronavirus 2

**Reference** ( 1 )

**Package**

100 µg

## PROPERTIES

**Form** Liquid

**Buffer** PBS

**Preservative** No preservative

**Storage** Store as concentrated solution. Centrifuge briefly prior to opening vial. Aliquot and store at -20°C or below. Avoid multiple freeze-thaw cycles. For long-term storage after reconstitution, aliquot and store at -70°C or below. Do not vortex.

**Concentration** 1.6 mg/ml (Please refer to the vial label for the specific concentration.)

**Region/Sequence** SARS-CoV-2 Spike RBD of QHD43416.1 (319-541 a.a) with N501Y mutation and mouse Fc tag (IgG2a) at the C-terminus

**Expression System** HEK293 cells

**Purity** >95%

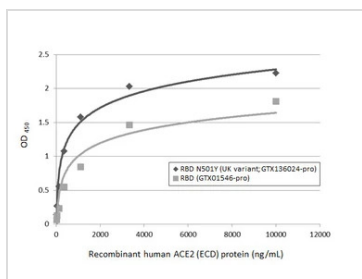
**Conjugation** Unconjugated

## Note

For laboratory research use only. Not for any clinical, therapeutic, or diagnostic use in humans or animals. Not for animal or human consumption.

Purchasers shall not, and agree not to enable third parties to, analyze, copy, reverse engineer or otherwise attempt to determine the structure or sequence of the product.

## DATA IMAGES

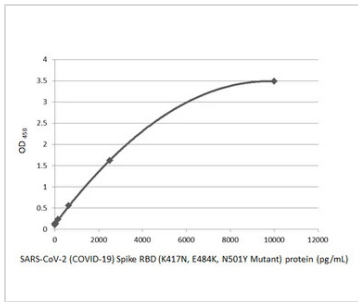


### GTX136024-pro Binding Assay Image

Functional ELISA analysis of immobilized recombinant SARS-CoV-2 (COVID-19) Spike RBD (N501Y Mutant) protein, mouse Fc tag (UK variant) (GTX136024-pro) and SARS-CoV-2 (COVID-19) Spike RBD protein, His tag (active) (GTX01546-pro) (coated at 2 µg/mL) binding to soluble recombinant Human ACE2 (ECD) protein, mouse IgG Fc tag (active) (GTX135683-pro) (13.72-10000 ng/mL). Bound protein was detected by ACE2 antibody [N1N2], N-term (GTX101395) (0.1 µg/mL), and Rabbit IgG antibody (HRP) (GTX213110-01) (1:10000) was used to detect bound primary antibody.



For full product information, images and publications, please visit our [website](https://www.genetex.com).



#### GTX136024-pro ELISA Image

Sandwich ELISA detection of recombinant SARS-CoV-2 (COVID-19) Spike RBD (N501Y Mutant) protein, mouse Fc tag (GTX136024-pro) using SARS-CoV-2 (COVID-19) Spike RBD antibody [HL1014] (GTX635807) as capture antibody at concentration of 5 µg/mL and SARS-CoV-2 (COVID-19) Spike RBD antibody [HL1004] (GTX635793) as detection antibody at concentration of 1 µg/mL.

Please notice that GTX635793 needs to be conjugated to HRP to function as the detection antibody when paired with GTX635807. Please contact us for custom HRP-conjugated antibody.



For full product information, images and publications, please visit our [website](https://www.genetex.com).