

## SARS-CoV-2 (COVID-19) Spike RBD Protein, B.1.1.7 with E484K, His tag (active)

## Cat. No. GTX136058-pro

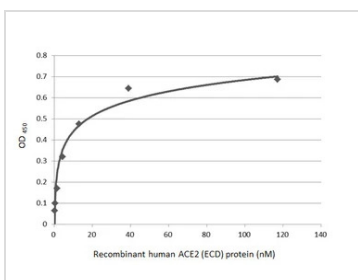
<b>Applications</b>	Binding Assay, WB
<b>Species</b>	SARS Coronavirus 2

Package  
100 µg

## Properties

<b>Form</b>	Liquid
<b>Buffer</b>	PBS
<b>Preservative</b>	No preservatives
<b>Storage</b>	Store as concentrated solution. Centrifuge briefly prior to opening vial. Aliquot and store at -20°C or below. Avoid multiple freeze-thaw cycles. For long-term storage after reconstitution, aliquot and store at -70°C or below. Do not vortex.
<b>Concentration</b>	1 mg/ml (Please refer to the vial label for the specific concentration.)
<b>Region/Sequence</b>	SARS-CoV-2 Spike RBD of QHD43416.1 (319-541 a.a) with E484K and N501Y mutations and His tag at the C-terminus
<b>Expression System</b>	HEK293 cells
<b>Purity</b>	>95%
<b>Conjugation</b>	Unconjugated
<b>Note</b>	For <i>In vitro</i> laboratory use only. Not for any clinical, therapeutic, or diagnostic use in humans or animals. Not for animal or human consumption.

## DATA IMAGES

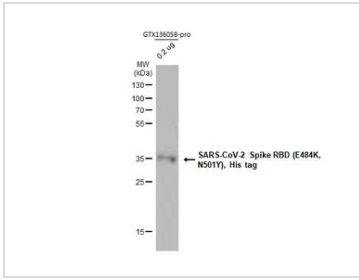


## GTX136058-pro Binding Assay Image

Functional ELISA analysis of immobilized recombinant SARS-CoV-2 (COVID-19) Spike RBD Protein, B.1.1.7 with E484K, His tag (active) (GTX136058-pro) (coated at 2 µg/mL) binding to soluble recombinant Human ACE2 (ECD) protein, mouse IgG Fc tag (active) (GTX135683-pro) (0.16-117.19 nM). Bound protein was detected by Goat Anti-Mouse IgG antibody (HRP) (GTX213111-01) (1:10000).

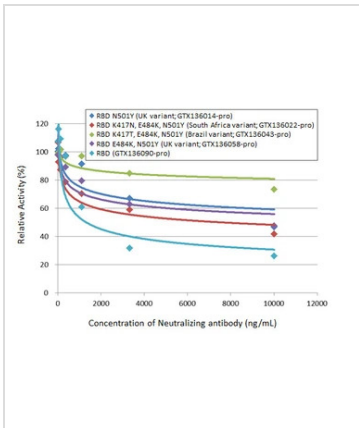


For full product information, images and publications, please visit our [website](#).



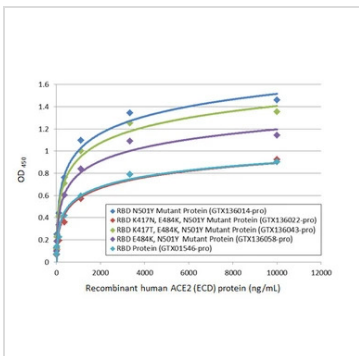
**GTX136058-pro WB Image**

SARS-CoV-2 Spike RBD (E484K, N501Y), His tag protein (GTX136058-pro, 0.2 µg) was separated by 12% SDS-PAGE, and the membrane was blotted with the SARS-CoV-2 (COVID-19) Spike RBD antibody [HL257] (GTX635692) diluted at 1:5000.



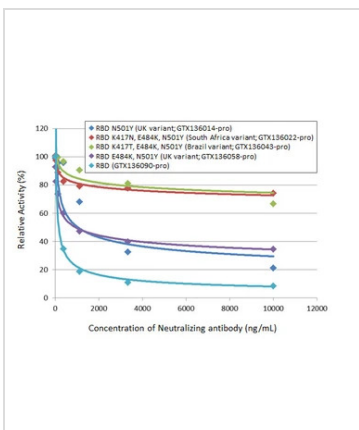
**GTX136058-pro Binding Assay Image**

Inhibition analysis of immobilized recombinant SARS-CoV-2 (COVID-19) Spike RBD (N501Y Mutant) protein, His tag (active) (UK variant) (GTX136014-pro), SARS-CoV-2 (COVID-19) Spike RBD (K417N, E484K, N501Y Mutant) protein, His tag (active) (South Africa variant) (GTX136022-pro), SARS-CoV-2 (COVID-19) Spike RBD (K417T, E484K, N501Y Mutant) protein, His tag (active) (Brazil variant) (GTX136043-pro), SARS-CoV-2 (COVID-19) Spike RBD (E484K, N501Y Mutant) protein, His tag (active) (UK variant) (GTX136058-pro) and SARS-CoV-2 (COVID-19) Spike RBD protein, His tag (active) (GTX136090-pro) (coated at 2 µg/mL) binding to soluble recombinant Human ACE2 (ECD) protein, mouse IgG Fc tag (active) (GTX135683-pro) (1000 ng/mL). ACE2 binding was inhibited by increasing concentrations of SARS-CoV-2 (COVID-19) Spike RBD antibody (GTX135709) (13.72-10000 ng/mL). Bound ACE2 was detected by Goat Anti-Mouse IgG antibody (HRP) (GTX213111-01) (1:10000).



**GTX136058-pro Binding Assay Image**

Functional ELISA analysis of immobilized recombinant SARS-CoV-2 (COVID-19) Spike RBD (N501Y Mutant) protein, His tag (active) (GTX136014-pro), SARS-CoV-2 (COVID-19) Spike RBD (K417N, E484K, N501Y Mutant) protein, His tag (active) (GTX136022-pro), SARS-CoV-2 (COVID-19) Spike RBD (K417T, E484K, N501Y Mutant) protein, His tag (active) (GTX136043-pro), SARS-CoV-2 (COVID-19) Spike RBD (E484K, N501Y Mutant) protein, His tag (active) (GTX136058-pro) and SARS-CoV-2 (COVID-19) Spike RBD protein, His tag (active) (GTX01546-pro) (coated at 2 µg/mL) binding to soluble recombinant Human ACE2 (ECD) protein, mouse IgG Fc tag (active) (GTX135683-pro) (13-10000 ng/mL). Bound protein was detected by Goat Anti-Mouse IgG antibody (HRP) (GTX213111-01) (1:10000).



**GTX136058-pro Binding Assay Image**

Inhibition analysis of immobilized recombinant SARS-CoV-2 (COVID-19) Spike RBD (N501Y Mutant) protein, His tag (active) (UK variant) (GTX136014-pro), SARS-CoV-2 (COVID-19) Spike RBD (K417N, E484K, N501Y Mutant) protein, His tag (active) (South Africa variant) (GTX136022-pro), SARS-CoV-2 (COVID-19) Spike RBD (K417T, E484K, N501Y Mutant) protein, His tag (active) (Brazil variant) (GTX136043-pro), SARS-CoV-2 (COVID-19) Spike RBD (E484K, N501Y Mutant) protein, His tag (active) (UK variant) (GTX136058-pro) and SARS-CoV-2 (COVID-19) Spike RBD protein, His tag (active) (GTX136090-pro) (coated at 2 µg/mL) binding to soluble recombinant Human ACE2 (ECD) protein, mouse IgG Fc tag (active) (GTX135683-pro) (1000 ng/mL). ACE2 binding was inhibited by increasing concentrations of SARS-CoV-2 (COVID-19) Spike RBD antibody [HL1004] (GTX635793) (14-10000 ng/mL). Bound ACE2 was detected by Goat Anti-Mouse IgG antibody (HRP) (GTX213111-01) (1:10000).



For full product information, images and publications, please visit our [website](#).