

# SARS-CoV-2 (COVID-19) Spike (ECD) Protein, P.1 / Gamma variant, His tag (active)

## Cat No. GTX136091-pro

<b>Application</b>	ELISA, Functional Assay, Sandwich ELISA
<b>Species</b>	SARS Coronavirus 2

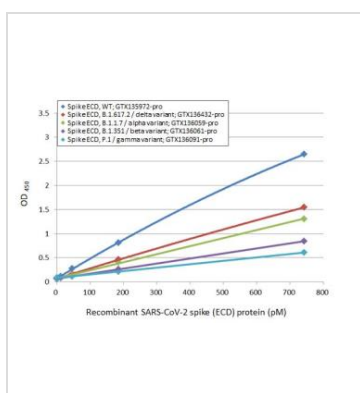
### Package

100 µg

## PROPERTIES

<b>Form</b>	Liquid
<b>Buffer</b>	PBS
<b>Preservative</b>	No Preservative
<b>Storage</b>	Store as concentrated solution. Centrifuge briefly prior to opening vial. Aliquot and store at -20°C or below. Avoid multiple freeze-thaw cycles.
<b>Concentration</b>	Batch dependent (Please refer to the vial label for the specific concentration.)
<b>Region/Sequence</b>	SARS-CoV-2 Spike of QHD43416.1 (1-1213 a.a, extracellular domain) with Brazil variant (P.1 / 501Y.V3 / B.1.1.28) mutations (L18F, T20N, P26S, D138Y, R190S, K417T, E484K, N501Y, D614G, H655Y, T1027I, V1176F), S1-S2 cleavage site mutations (682-685GSAS), 6 stabilizing (HexaPro) mutations (F817P, A892P, A899P, A942P, K986P, V987P), and His tag at the C-terminus.
<b>Expression System</b>	HEK293 cells
<b>Purity</b>	>95%
<b>Conjugation</b>	Unconjugated
<b>Note</b>	For <i>In vitro</i> laboratory use only. Not for any clinical, therapeutic, or diagnostic use in humans or animals. Not for animal or human consumption.

## DATA IMAGES



### GTX136091-pro ELISA Image

Sandwich ELISA detection of recombinant Spike ECD protein(s) derived from different strains of SARS-CoV-2 virus (ie., Wild type; B.1.617.2 delta variant; B.1.1.7 alpha variant; B.1.351 beta variant; P.1 gamma variant) using antibodies as below.

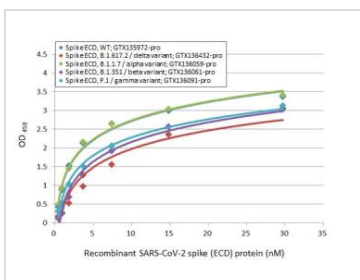
**Capture:** SARS-CoV-2 (COVID-19) Spike RBD antibody [HL1014] (GTX635807) (5 µg/mL)

**Detection:** HRP-conjugated SARS-CoV-2 (COVID-19) Spike RBD antibody [HL1002] (GTX635791) (1 µg/mL)

Please notice that GTX635791 needs to be conjugated to HRP to function as the detection antibody when paired with GTX635807. Please contact us for custom HRP-conjugated antibody.

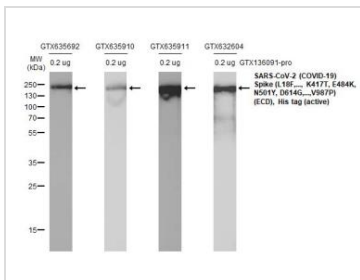


For full product information, images and publications, please visit our [website](#).



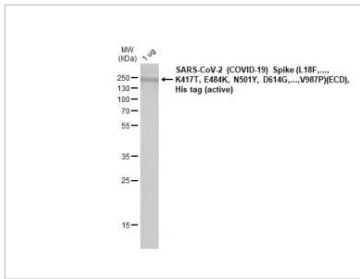
**GTX136091-pro ELISA Image**

Indirect ELISA analysis performed by coating plate with recombinant Spike ECD protein(s) derived from different strains of SARS-CoV-2 virus (ie., Wild type; B.1.1.7 alpha variant; B.1.351 beta variant; P.1 gamma variant; B.1.617.2 delta variant) (29.71-0.46 nM). Coated protein was probed with SARS-CoV-2 (COVID-19) Spike RBD antibody [HL1002] (GTX635791) (1 µg/mL). Goat anti-rabbit IgG antibody (HRP) (GTX213110-01) (1:10000) was used to detect bound primary antibody.



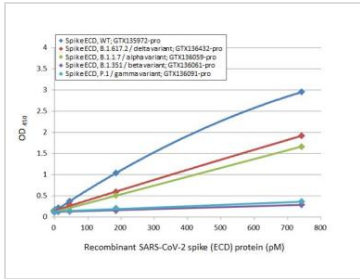
**GTX136091-pro Image**

SARS-CoV-2 (COVID-19) Spike (L18F,..., K417T, E484K, N501Y, D614G,...,V987P)(ECD), His tag (active) (0.2 µg, GTX136091-pro) were separated by 12% SDS-PAGE, and the membrane were blotted with various antibodies diluted at 1:5000. The HRP-conjugated anti-rabbit IgG antibody (GTX213110-01) was used to detect the primary antibody.



**GTX136091-pro Image**

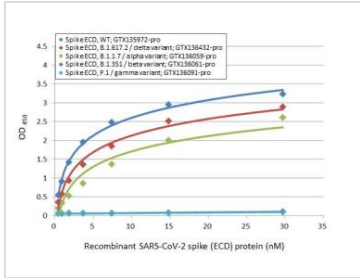
1 µg of GTX136091-pro SARS-CoV-2 (COVID-19) Spike (L18F,..., K417T, E484K, N501Y, D614G,...,V987P) (ECD), His tag (active) protein was analyzed using SDS-PAGE and stained with coomassie blue and captured by monochrome camera.



**GTX136091-pro ELISA Image**

Sandwich ELISA detection of recombinant Spike ECD protein(s) derived from different strains of SARS-CoV-2 virus (ie., Wild type; B.1.1.7 alpha variant; B.1.351 beta variant; P.1 gamma variant; B.1.617.2 delta variant) using antibodies as below.

**Capture:** SARS-CoV-2 (COVID-19) Spike RBD antibody [HL1014] (GTX635807) (5 µg/mL)  
**Detection:** SARS-CoV-2 (COVID-19) Spike RBD antibody [HL1004] (HRP) (GTX635793-01) (1 µg/mL)



**GTX136091-pro ELISA Image**

Sandwich ELISA detection of recombinant Spike ECD protein(s) derived from different strains of SARS-CoV-2 virus (ie., Wild type; B.1.1.7 alpha variant; B.1.351 beta variant; P.1 gamma variant; B.1.617.2 delta variant) using antibodies as below.

**Capture:** SARS-CoV / SARS-CoV-2 (COVID-19) spike antibody [1A9] (GTX632604) (5 µg/mL)  
**Detection:** SARS-CoV-2 (COVID-19) Spike RBD antibody [HL1003] (GTX635792) (1 µg/mL)



For full product information, images and publications, please visit our [website](#).