

SARS-CoV-2 (COVID-19) Spike S1 Protein, P.1 / Gamma variant, His tag (active)

Cat. No. GTX136094-pro

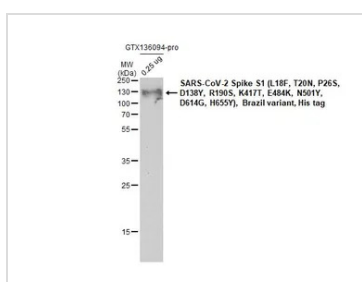
Applications	Binding Assay, WB
Species	SARS Coronavirus 2

Package
100 µg

Properties

Form	Liquid
Buffer	PBS
Preservative	No preservative
Storage	Store as concentrated solution. Centrifuge briefly prior to opening vial. Aliquot and store at -20°C or below. Avoid multiple freeze-thaw cycles. For long-term storage after reconstitution, aliquot and store at -70°C or below. Do not vortex.
Concentration	0.5 mg/ml (Please refer to the vial label for the specific concentration.)
Region/Sequence	SARS-CoV-2 Spike S1 of QHD43416.1 (1-685 a.a) with S1-S2 cleavage site mutations (682-685GSAS) and variant mutations (L18F, T20N, P26S, D138Y, R190S, K417T, E484K, N501Y, D614G, H655Y) and His tag at the C-terminus.
Expression System	HEK293 cells
Purity	>95%
Conjugation	Unconjugated
Note	For <i>In vitro</i> laboratory use only. Not for any clinical, therapeutic, or diagnostic use in humans or animals. Not for animal or human consumption.

DATA IMAGES

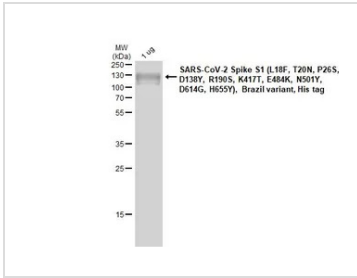


GTX136094-pro WB Image

SARS-CoV-2 Spike S1 (L18F, T20N, P26S, D138Y, R190S, K417T, E484K, N501Y, D614G, H655Y), Brazil variant, His tag protein (GTX136094-pro, 0.5 µg) was separated by 12% SDS-PAGE, and the membrane was blotted with the SARS-CoV-2 (COVID-19) Spike RBD antibody [HL257] (GTX635692) diluted at 1:5000.

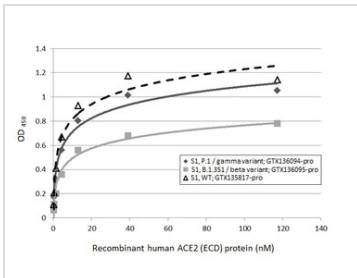


For full product information, images and publications, please visit our [website](https://www.genetex.com).



GTX136094-pro Image

1 μ g of GTX136094-pro SARS-CoV-2 Spike S1 (L18F, T20N, P26S, D138Y, R190S, K417T, E484K, N501Y, D614G, H655Y), Brazil variant, His tag protein was analyzed using SDS-PAGE and stained with coomassie blue and captured by monochrome camera.



GTX136094-pro Binding Assay Image

Functional ELISA analysis of immobilized recombinant Spike S1 protein(s) derived from different strains of SARS-CoV-2 virus (ie., Wild type; B.1.351 beta variant; P.1 gamma variant) (coated at 2 μ g/mL) binding to soluble recombinant Human ACE2 (ECD) protein, mouse IgG Fc tag (active) (GTX135683-pro) (0.16-117.19 nM). Bound protein was detected by Goat Anti-Mouse IgG antibody (HRP) (GTX213111-01) (1:10000).



For full product information, images and publications, please visit our [website](https://www.genetex.com).