

SARS-CoV-2 (COVID-19) Spike S1 Protein, B.1.351 / Beta variant, His tag (active)

Cat No. GTX136095-pro

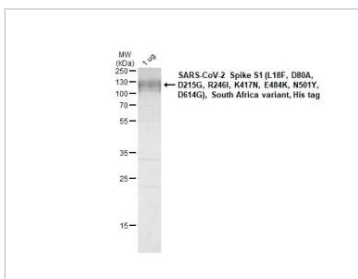
Application	Functional Assay
Species	SARS Coronavirus 2

Package
100 µg

PROPERTIES

Form	Liquid
Buffer	PBS
Preservative	No Preservative
Storage	Store as concentrated solution. Centrifuge briefly prior to opening vial. Aliquot and store at -20°C or below. Avoid multiple freeze-thaw cycles.
Concentration	Batch dependent (Please refer to the vial label for the specific concentration.)
Region/Sequence	SARS-CoV-2 Spike S1 of QHD43416.1 (1-685 a.a) with mutations (L18F, D80A, D215G, R246I, K417N, E484K, N501Y, D614G) and His tag at the C-terminus
Expression System	HEK293 cells
Purity	>95%
Conjugation	Unconjugated
Note	For <i>In vitro</i> laboratory use only. Not for any clinical, therapeutic, or diagnostic use in humans or animals. Not for animal or human consumption.

DATA IMAGES

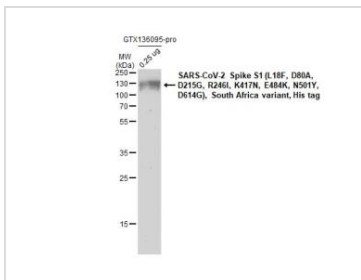


GTX136095-pro Image

1 µg of GTX136095-pro SARS-CoV-2 Spike S1 (L18F, D80A, D215G, R246I, K417N, E484K, N501Y, D614G), South Africa variant, His tag protein was analyzed using SDS-PAGE and stained with coomassie blue and captured by monochrome camera.

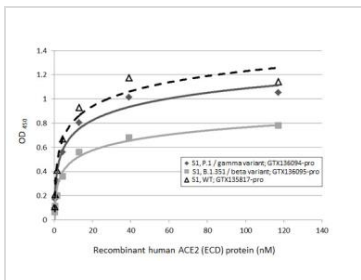


For full product information, images and publications, please visit our [website](https://www.genetex.com).



GTX136095-pro Image

SARS-CoV-2 Spike S1 (L18F, D80A, D215G, R246I, K417N, E484K, N501Y, D614G), South Africa variant, His tag protein (GTX136095-pro, 0.5 µg) was separated by 12% SDS-PAGE, and the membrane was blotted with the SARS-CoV-2 (COVID-19) Spike RBD antibody [HL257] (GTX635692) diluted at 1:5000.



GTX136095-pro Functional Assay Image

Functional ELISA analysis of immobilized recombinant Spike S1 protein(s) derived from different strains of SARS-CoV-2 virus (ie., Wild type; B.1.351 beta variant; P.1 gamma variant) (coated at 2 µg/mL) binding to soluble recombinant Human ACE2 (ECD) protein, mouse IgG Fc tag (active) (GTX135683-pro) (0.16-117.19 nM). Bound protein was detected by Goat Anti-Mouse IgG antibody (HRP) (GTX213111-01) (1:10000).



For full product information, images and publications, please visit our [website](#).