

# JWA antibody, C-term

**Cat. No. GTX13618**

<b>Host</b>	Goat
<b>Clonality</b>	Polyclonal
<b>Isotype</b>	IgG
<b>Application</b>	WB, IHC-P
<b>Reactivity</b>	Human

**Package**  
100 µg

## APPLICATION

### Application Note

\*Optimal dilutions/concentrations should be determined by the researcher.

Suggested dilution	Recommended dilution
WB	0.1-0.3µg/ml
IHC-P	3.75µg/ml

Not tested in other applications.

**Calculated MW** 22 kDa. ( [Note](#) )

## PROPERTIES

<b>Form</b>	Liquid
<b>Buffer</b>	TBS, 0.5% BSA
<b>Preservative</b>	0.02% Sodium azide
<b>Storage</b>	Store as concentrated solution. Centrifuge briefly prior to opening vial. For short-term storage (1-2 weeks), store at 4°C. For long-term storage, aliquot and store at -20°C or below. Avoid multiple freeze-thaw cycles.
<b>Concentration</b>	0.50 mg/ml (Please refer to the vial label for the specific concentration.)
<b>Immunogen</b>	Peptide with sequence C-NRLTDYISKVKE, from the C Terminus of the protein sequence according to NP_006398.1.
<b>Purification</b>	Purified by ammonium sulphate precipitation followed by antigen affinity chromatography
<b>Conjugation</b>	Unconjugated

### Note

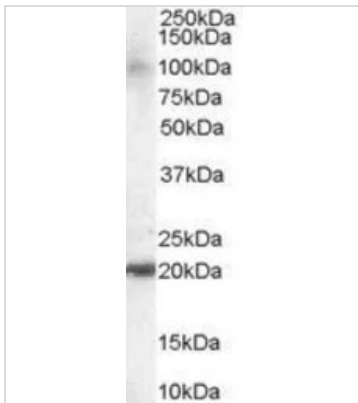
For laboratory research use only. Not for any clinical, therapeutic, or diagnostic use in humans or animals. Not for animal or human consumption.

Purchasers shall not, and agree not to enable third parties to, analyze, copy, reverse engineer or otherwise attempt to determine the structure or sequence of the product.



For full product information, images and publications, please visit our [website](#).

## DATA IMAGES

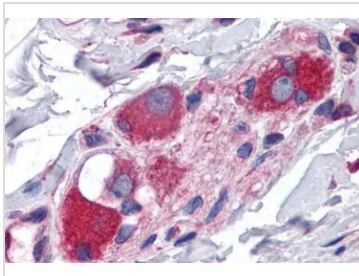


### GTX13618 WB Image

WB analysis of human brain lysate using GTX13618 JWA antibody, C-term.

Dilution : 0.1µg/ml

Loading : 35µg protein in RIPA buffer

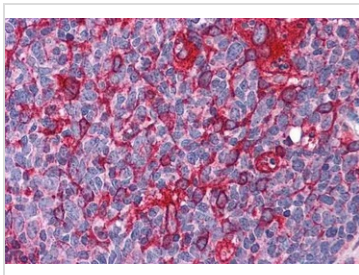


### GTX13618 IHC-P Image

IHC-P analysis of human small intestine using GTX13618 JWA antibody, C-term.

Antigen retrieval : citrate buffer pH 6

Dilution : 3.75µg/ml



### GTX13618 IHC-P Image

IHC-P analysis of human tonsil using GTX13618 JWA antibody, C-term.

Antigen retrieval : citrate buffer pH 6

Dilution : 3.75µg/ml



For full product information, images and publications, please visit our [website](https://www.genetex.com).