

## Influenza A virus Nucleoprotein (A/Hong Kong/2671/2019 (H3N2)), DDDDK Tag

Cat. No. GTX136317-pro

**Application** ELISA, Lateral Flow, Sandwich ELISA**Species** Influenza A virus

★★★★★ Review ( 1 )

Package  
100 µg

## APPLICATION

## Application Note

Recommended antibody pairs for sandwich ELISA:

Capture : GTX636199 / GTX636247, Detection : GTX636318 or Capture : GTX636318, Detection : GTX636199 / GTX636247

Please notice that detection antibodies need to be conjugated to HRP when paired with capture antibodies. Please contact us for custom HRP-conjugated antibody.

Recommended antibody pairs for Lateral Flow:

Capture : GTX636199 / GTX637790, Detection : GTX637790 / GTX636199 or Capture : GTX636199, Detection : GTX637790

Please notice that the detection antibodies need to be conjugated to Gold to function when paired with capture antibodies. Please contact us for custom Gold-conjugated antibody.

## PROPERTIES

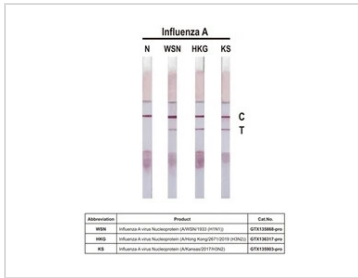
**Form** Liquid**Buffer** 90mM Tris, 1M Arginine**Preservative** No preservative**Storage** Store as concentrated solution. Centrifuge briefly prior to opening vial. Aliquot and store at -20°C or below. Avoid multiple freeze-thaw cycles. For long-term storage after reconstitution, aliquot and store at -70°C or below. Do not vortex.**Concentration** 1 mg/ml (Please refer to the vial label for the specific concentration.)**Region/Sequence** C-terminal DDDDK tagged full length NP (nucleoprotein) of Influenza A virus (A/Hong Kong/2671/2019 (H3N2)) (EPI1698482)**Expression System** HEK293 cells**Purity** >95%**Conjugation** Unconjugated**Note**

For laboratory research use only. Not for any clinical, therapeutic, or diagnostic use in humans or animals. Not for animal or human consumption.

Purchasers shall not, and agree not to enable third parties to, analyze, copy, reverse engineer or otherwise attempt to determine the structure or sequence of the product.



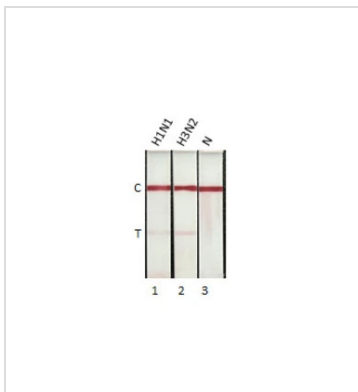
For full product information, images and publications, please visit our [website](#).

**DATA IMAGES**

**GTX136317-pro Lateral Flow Image**

Detection of recombinant influenza A virus nucleoproteins of the indicated strains by lateral flow assay using the recombinant rabbit monoclonal antibody pair.

**Capture:** Influenza A virus Nucleoprotein antibody [HL1089] (GTX636247)

**Detection:** Influenza A virus Nucleoprotein antibody [HL1103] (GTX636318)


**GTX136317-pro Lateral Flow Image**

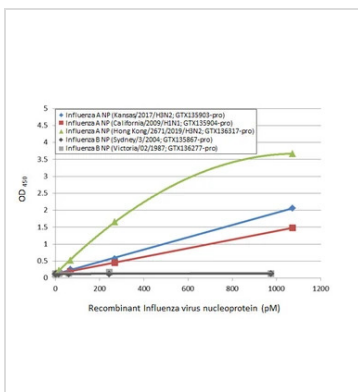
Detection of influenza A virus nucleoprotein by lateral flow assay using the monoclonal antibody pair.

**Capture:** Influenza A virus Nucleoprotein antibody (GTX637790 [HL1953])

**Detection:** Influenza A virus Nucleoprotein antibody (GTX636247 [HL1089])

**Samples (10 ng) :**

1. Influenza A virus Nucleoprotein (A/California/2009 (H1N1)) (GTX135904-pro)
2. Influenza A virus Nucleoprotein (A/Hong Kong/2671/2019 (H3N2)) (GTX136317-pro)
3. Lysis buffer

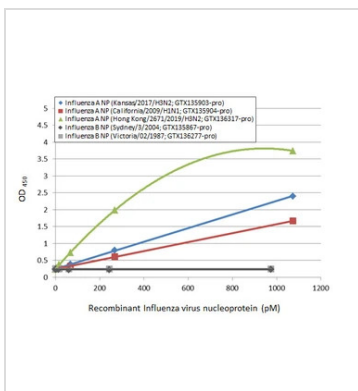

**GTX136317-pro ELISA Image**

Sandwich ELISA detection of recombinant nucleoproteins (NP) derived from different strains of Influenza A virus (i.e., A/Kansas/2017 (H3N2); A/California/2009 (H1N1); A/Hong Kong/2671/2019 (H3N2)) and Influenza B virus (i.e., B/Sydney/3/2004; B/Victoria/02/1987) using antibodies as below.

**Capture:** Influenza A virus NP (nucleoprotein) antibody [HL1089] (GTX636247) (5 µg/mL)

**Detection:** HRP-conjugated Influenza A virus NP (nucleoprotein) antibody [HL1103] (GTX636318) (1 µg/mL).

Please notice that GTX636318 needs to be conjugated to HRP to function as the detection antibody when paired with GTX636247. Please contact us for custom HRP-conjugated antibody.


**GTX136317-pro ELISA Image**

Sandwich ELISA detection of recombinant nucleoproteins (NP) derived from different strains of Influenza A virus (i.e., A/Kansas/2017 (H3N2); A/California/2009 (H1N1); A/Hong Kong/2671/2019 (H3N2)) and Influenza B virus (i.e., B/Sydney/3/2004; B/Victoria/02/1987) using antibodies as below.

**Capture:** Influenza A virus NP (nucleoprotein) antibody [HL1103] (GTX636318) (5 µg/mL)

**Detection:** HRP-conjugated Influenza A virus NP (nucleoprotein) antibody [HL1089] (GTX636247) (1 µg/mL).

Please notice that GTX636247 needs to be conjugated to HRP to function as the detection antibody when paired with GTX636318. Please contact us for custom HRP-conjugated antibody.



For full product information, images and publications, please visit our [website](https://www.genetex.com).