

SARS-CoV-2 (COVID-19) Spike RBD Protein, B.1.617.2 / Delta variant, His tag (active)

Cat. No. GTX136332-pro

Applications	Binding Assay, WB, ELISA, Sandwich ELISA
Species	SARS Coronavirus 2

References (1)
 Package
 100 µg

Properties

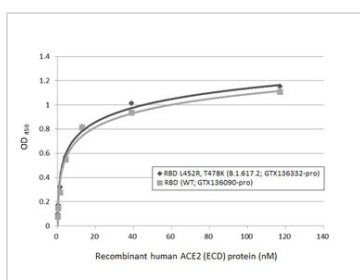
Form	Liquid
Buffer	PBS
Preservative	No preservative
Storage	Store as concentrated solution. Centrifuge briefly prior to opening vial. Aliquot and store at -20°C or below. Avoid multiple freeze-thaw cycles. For long-term storage after reconstitution, aliquot and store at -70°C or below. Do not vortex.
Concentration	0.5 mg/ml (Please refer to the vial label for the specific concentration.)
Region/Sequence	SARS-CoV-2 Spike RBD of QHD43416.1 (319-541 a.a) with L452R and T478K mutations and His tag at the C-terminus
Expression System	HEK293 cells
Purity	>95%
Conjugation	Unconjugated

Note

For laboratory research use only. Not for any clinical, therapeutic, or diagnostic use in humans or animals. Not for animal or human consumption.

Purchasers shall not, and agree not to enable third parties to, analyze, copy, reverse engineer or otherwise attempt to determine the structure or sequence of the product.

DATA IMAGES

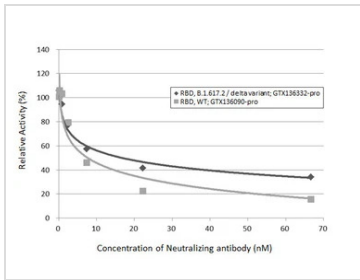


GTX136332-pro Binding Assay Image

Functional ELISA analysis of immobilized recombinant Spike RBD proteins of SARS-CoV-2 (COVID-19) derived from different strains (Delta variant B.1.617.2 or Wide type strain) (2 µg/mL) binding to soluble recombinant Human ACE2 (ECD) protein, mouse IgG Fc tag (active) (GTX135683-pro) (0.16-117.19 nM). Bound protein was detected by Goat Anti-Mouse IgG antibody (HRP) (GTX213111-01) (1:10000).

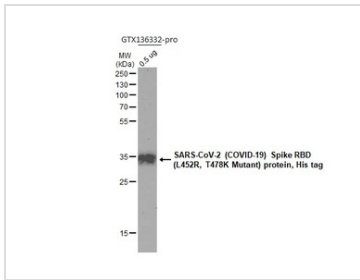


For full product information, images and publications, please visit our [website](#).



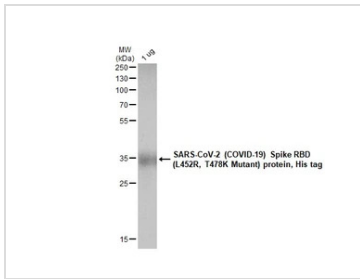
GTX136332-pro Binding Assay Image

Inhibition analysis of immobilized recombinant RBD proteins derived from different strains of SARS-CoV-2 virus (Wild type or B.1.617.2 delta variant) (coated at 2 µg/mL) binding to soluble recombinant Human ACE2 (ECD) protein, mouse IgG Fc tag (active) (GTX135683-pro) (1000 ng/mL) ACE2 binding was inhibited by increasing concentrations of SARS-CoV-2 (COVID-19) Spike RBD antibody [HL1002] (GTX635791) (0.09-66.67 nM). Bound ACE2 was detected by Goat Anti-Mouse IgG antibody (HRP) (GTX213111-01) (1:10000).



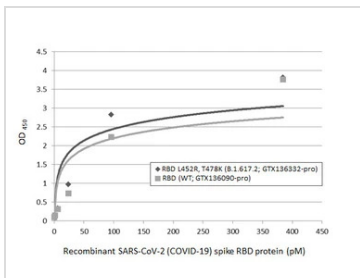
GTX136332-pro WB Image

SARS-CoV-2 (COVID-19) Spike RBD (L452R, T478K Mutant) protein, His tag protein (GTX136332-pro, 0.5 µg) was separated by 12% SDS-PAGE, and the membrane was blotted with SARS-CoV-2 (COVID-19) Spike RBD antibody [HL257] (GTX635692) diluted at 1:5000.



GTX136332-pro Image

1 µg of GTX136332-pro SARS-CoV-2 (COVID-19) Spike RBD (L452R, T478K Mutant) protein, His tag protein was analyzed using SDS-PAGE and stained with coomassie blue and captured by monochrome camera.



GTX136332-pro ELISA Image

Sandwich ELISA detection of recombinant Spike RBD proteins of SARS-CoV-2 (COVID-19) derived from different strains (Delta variant B.1.617.2 or Wide type strain) using the antibodies as follows.
 Capture : SARS-CoV-2 (COVID-19) Spike RBD antibody [HL1014] (GTX635807) (5 µg/mL)
 Detection: HRP-conjugated SARS-CoV-2 (COVID-19) Spike RBD antibody [HL1002] (GTX635791) (1 µg/mL)
 Please notice that GTX635791 needs to be conjugated to HRP to function as the detection antibody when paired with GTX635807. Contact us for custom HRP-conjugated antibody.



For full product information, images and publications, please visit our [website](#).