

UBE2N antibody

Cat. No. GTX13663

Host	Rabbit
Clonality	Polyclonal
Isotype	IgG
Applications	WB, IP
Reactivity	Human

Package
100 µg

Applications

Application Note

*Optimal dilutions/concentrations should be determined by the researcher.

Suggested dilution	Recommended dilution
WB	2 µg/ml
IP	1:10 - 1:500

Not tested in other applications.

Calculated MW 17 kDa. ([Note](#))

Properties

Form	Liquid
Buffer	PBS, 0.05% BSA
Preservative	0.05% Sodium azide
Storage	Store as concentrated solution. Centrifuge briefly prior to opening vial. For short-term storage (1-2 weeks), store at 4°C. For long-term storage, aliquot and store at -20°C or below. Avoid multiple freeze-thaw cycles.
Concentration	0.5 mg/ml (Please refer to the vial label for the specific concentration.)
Immunogen	This antibody was generated by immunizing rabbits with a mixture of synthetic peptides containing amino acids 2-19 and 131-148 of human UBE2N.
Purification	Protein G purified
Conjugation	Unconjugated

Note

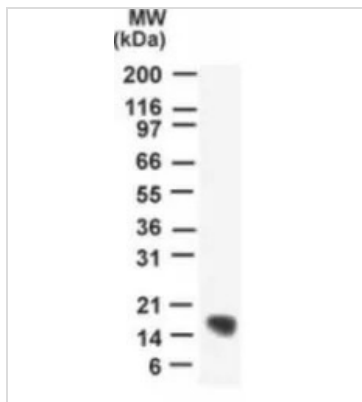
For laboratory research use only. Not for any clinical, therapeutic, or diagnostic use in humans or animals. Not for animal or human consumption.

Purchasers shall not, and agree not to enable third parties to, analyze, copy, reverse engineer or otherwise attempt to determine the structure or sequence of the product.



For full product information, images and publications, please visit our [website](#).

DATA IMAGES

**GTX13663 WB Image**

WB analysis of human heart tissue lysate using GTX13663 UBE2N antibody.



For full product information, images and publications, please visit our [website](#).