

## NKIRAS1 antibody [184C278]

**Cat. No. GTX13666**

<b>Host</b>	Mouse
<b>Clonality</b>	Monoclonal
<b>Isotype</b>	IgG1
<b>Applications</b>	WB
<b>Reactivity</b>	Human, Mouse, Rat, Bovine, Dog, Pig, Horse, Xenopus, Primate

**Package**  
100 µg

## Applications

**Application Note**

\*Optimal dilutions/concentrations should be determined by the researcher.

Suggested dilution	Recommended dilution
WB	0.5 - 1 µg/ml

Not tested in other applications.

**Calculated MW** 22 kDa. ([Note](#))

## Properties

<b>Form</b>	Liquid
<b>Buffer</b>	PBS, 0.2% Gelatin
<b>Preservative</b>	0.05% Sodium azide
<b>Storage</b>	Store as concentrated solution. Centrifuge briefly prior to opening vial. For short-term storage (1-2 weeks), store at 4°C. For long-term storage, aliquot and store at -20°C or below. Avoid multiple freeze-thaw cycles.
<b>Concentration</b>	0.5 mg/ml (Please refer to the vial label for the specific concentration.)
<b>Immunogen</b>	This monoclonal antibody was raised against a synthetic peptide containing amino acid residues 96-113 (RVELLKKEIDKFKDKKEV) of human kB-Ras1.
<b>Purification</b>	Protein G purified
<b>Conjugation</b>	Unconjugated

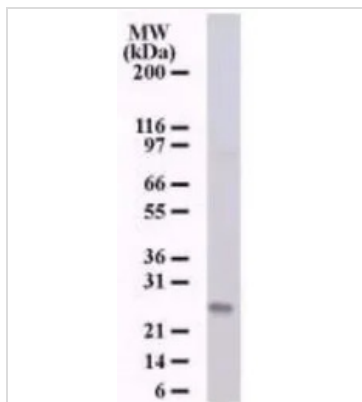
**Note** For laboratory research use only. Not for any clinical, therapeutic, or diagnostic use in humans or animals. Not for animal or human consumption.

Purchasers shall not, and agree not to enable third parties to, analyze, copy, reverse engineer or otherwise attempt to determine the structure or sequence of the product.



For full product information, images and publications, please visit our [website](#).

## DATA IMAGES

**GTX13666 WB Image**

WB analysis of 293 cell lysate using GTX13666 NKIRAS1 antibody [184C278].

Dilution : 0.5 µg/ml



For full product information, images and publications, please visit our [website](#).