

Respiratory Syncytial virus type A Nucleoprotein, DDDDK tag

Cat. No. GTX136751-pro

Applications	WB, ELISA, Lateral Flow, Sandwich ELISA
Species	Respiratory syncytial virus type A

Package
100 µg

Applications

Application Note

Recommended antibody pairs for Lateral Flow:

Capture : GTX638184, Detection : GTX638186, or Capture : GTX636650, Detection : GTX636648

Recommended antibody pairs for sandwich ELISA:

Capture : GTX636711 / GTX636649, Detection : GTX640511, or Capture : GTX636650 / GTX636649, Detection : GTX636648, or Capture : GTX636709, Detection : GTX636649, or Capture : GTX636647, Detection : GTX636705

Please notice that the detection antibody needs to be conjugated to HRP when paired with the capture antibody.

Please contact us for custom HRP-conjugated antibody.

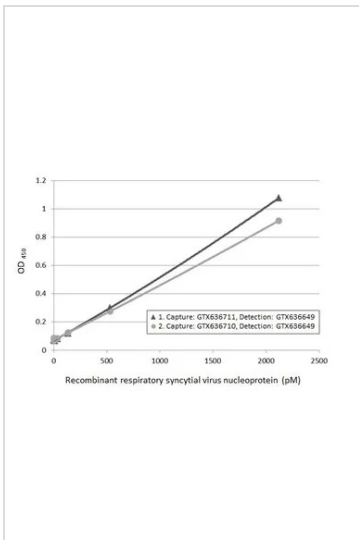
Properties

Form	Liquid
Buffer	Tris, 500mM NaCl
Preservative	No preservatives
Storage	Store as concentrated solution. Centrifuge briefly prior to opening vial. Aliquot and store at -20°C or below. Avoid multiple freeze-thaw cycles. For long-term storage after reconstitution, aliquot and store at -70°C or below. Do not vortex.
Concentration	0.2 mg/ml (Please refer to the vial label for the specific concentration.)
Region/Sequence	Respiratory syncytial virus of YP_009518852.1 (1-391 a.a) with DDDDK tag at the C-terminus
Expression System	HEK293 cells
Purity	>95%
Conjugation	Unconjugated
Note	For <i>In vitro</i> laboratory use only. Not for any clinical, therapeutic, or diagnostic use in humans or animals. Not for animal or human consumption.



For full product information, images and publications, please visit our [website](#).

DATA IMAGES



GTX136751-pro ELISA Image

Sandwich ELISA detection of recombinant HEK293 expressed, full-length respiratory syncytial virus type A nucleoprotein, DDDDK tag (GTX136751-pro) using ELISA pairs below.

Pair 1:

Capture: Respiratory Syncytial virus type A Nucleoprotein antibody [HL1297] (GTX636711) (5 µg/mL)

Detection: Respiratory Syncytial virus Nucleoprotein antibody [HL1247] (GTX636649) conjugated with HRP (1 µg/mL)

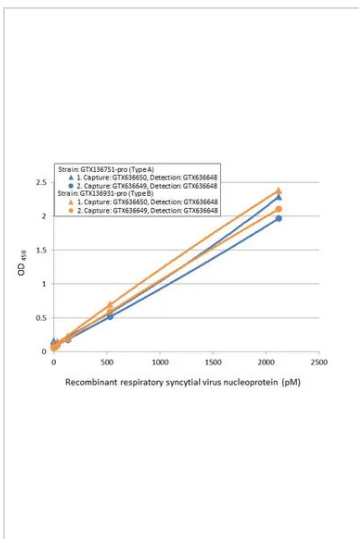
Pair 2:

Capture: Respiratory Syncytial virus Nucleoprotein antibody [HL1296] (GTX636710) (5 µg/mL)

Detection: Respiratory Syncytial virus Nucleoprotein antibody [HL1247] (GTX636649) conjugated with HRP (1 µg/mL)

Please notice that detection antibodies need to be conjugated to HRP to function when paired with capture one.

Please contact us for custom HRP-conjugated antibody.



GTX136751-pro ELISA Image

Sandwich ELISA of recombinant nucleoproteins (NP) derived from different strains of respiratory syncytial virus (i.e., type A; type B) using ELISA pairs below.

Pair 1:

Capture: Respiratory Syncytial virus Nucleoprotein antibody [HL1248] (GTX636650) (5 µg/mL)

Detection: Respiratory Syncytial virus Nucleoprotein antibody [HL1246] (GTX636648) conjugated with HRP (1 µg/mL)

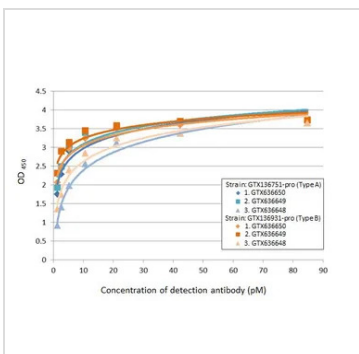
Pair 2:

Capture: Respiratory Syncytial virus Nucleoprotein antibody [HL1247] (GTX636649) (5 µg/mL)

Detection: Respiratory Syncytial virus Nucleoprotein antibody [HL1246] (GTX636648) conjugated with HRP (1 µg/mL)

Please notice that detection antibodies need to be conjugated to HRP to function when paired with capture one.

Please contact us for custom HRP-conjugated antibody.



GTX136751-pro ELISA Image

Indirect ELISA analysis performed by coating plate with recombinant nucleoproteins (NP) derived from different strains of respiratory syncytial virus (i.e., type A; type B) (84.76-1.32 nM). Coated protein was probed with Respiratory Syncytial virus Nucleoprotein antibodies (1 µg/mL) below. Goat anti-rabbit IgG antibody (HRP) (GTX213110-01) (1:10000) was used to detect bound primary antibody.

Antibodies:

1. Respiratory Syncytial virus Nucleoprotein antibody [HL1248] (GTX636650)
2. Respiratory Syncytial virus Nucleoprotein antibody [HL1247] (GTX636649)
3. Respiratory Syncytial virus type A Nucleoprotein antibody [HL1246] (GTX636648)



For full product information, images and publications, please visit our [website](#).