

Human Thrombospondin 2 protein, His tag

Cat. No. GTX136752-pro**Applications** ELISA, Sandwich ELISA**Species** Human**Package**

100 µg

Applications

Application Note

*Optimal dilutions/concentrations should be determined by the researcher.

Suggested dilution

ELISA

Recommended dilution

Assay dependent

Sandwich ELISA

Assay dependent

Not tested in other applications.

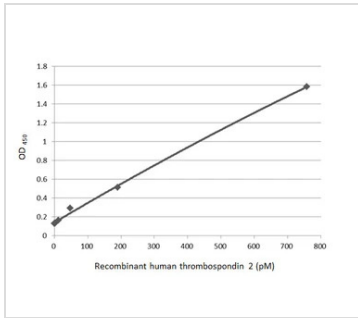
Properties

Form Liquid**Buffer** PBS**Preservative** No preservatives**Storage** Store as concentrated solution. Centrifuge briefly prior to opening vial. Aliquot and store at -20°C or below. Avoid multiple freeze-thaw cycles. For long-term storage after reconstitution, aliquot and store at -70°C or below. Do not vortex.**Concentration** 0.3 mg/ml (Please refer to the vial label for the specific concentration.)**Region/Sequence** Full-length of Human Thrombospondin 2 (NP_003238.2) with the C-terminal His tag**Expression System** HEK293 cells**Purity** >95%**Conjugation** Unconjugated**Note**

For laboratory research use only. Not for any clinical, therapeutic, or diagnostic use in humans or animals. Not for animal or human consumption.

Purchasers shall not, and agree not to enable third parties to, analyze, copy, reverse engineer or otherwise attempt to determine the structure or sequence of the product.

For full product information, images and publications, please visit our [website](#).

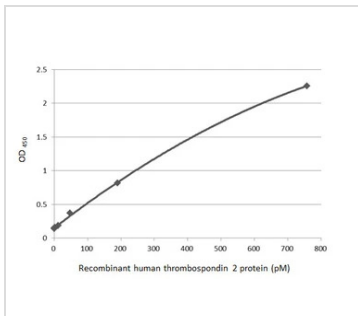
DATA IMAGES

GTX136752-pro ELISA Image

Sandwich ELISA detection of recombinant Human Thrombospondin 2 protein, His tag (GTX136752-pro) using antibodies as below.

Capture: Thrombospondin 2 antibody [HL1194] (GTX636506) (5 µg/mL)

Detection: HRP-conjugated Thrombospondin 2 antibody [HL1140] (GTX636411) (1 µg/mL)

Please notice that GTX636411 needs to be conjugated to HRP to function as the detection antibody when paired with GTX636506. Please contact us for custom HRP-conjugated antibody.


GTX136752-pro ELISA Image

Sandwich ELISA detection of recombinant Human Thrombospondin 2 protein, His tag (GTX136752-pro) using antibodies as below.

Capture: Thrombospondin 2 antibody [HL1194] (GTX636506) (5 µg/mL)

Detection: HRP-conjugated Thrombospondin 2 antibody [HL1140] (GTX636411) (1 µg/mL)

Please notice that GTX636411 needs to be conjugated to HRP to function as the detection antibody when paired with GTX636506. Please contact us for custom HRP-conjugated antibody.



For full product information, images and publications, please visit our [website](#).