

SARS-CoV-2 (COVID-19) Spike (ECD) Protein, Omicron / BA.1 variant, His tag

Cat. No. GTX136780-pro

Applications	Binding Assay, WB, ELISA, Sandwich ELISA
Species	SARS Coronavirus 2

References (1)
Package
100 µg

Applications

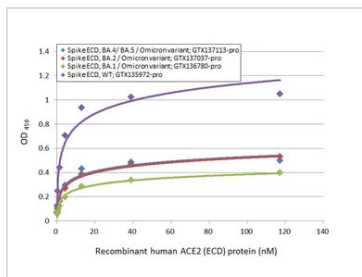
Application Note

Recommended antibody pairs for sandwich ELISA:
Capture : GTX635807, Detection : GTX635792-01.

Properties

Form	Lyophilized powder
Buffer	Reconstitute with distilled water to 0.8 mg/ml. Lyophilized from PBS, 2% Trehalose, 5% Mannitol, 0.01% Tween-80.
Preservative	No Preservative
Storage	Store at 4°C or below. After reconstitution, keep as concentrated solution. Aliquot and store at -20°C or below. Avoid multiple freeze-thaw cycles. For long-term storage after reconstitution, aliquot and store at -70°C or below. Do not vortex.
Region/Sequence	SARS-CoV-2 Spike of QHD43416.1 (1-1213 a.a, extracellular domain) with Omicron variant (BA.1 / B.1.1.529) mutations (A67V, del69-70, T95I, del142-144, Y145D, del211, L212I, ins214EPE, G339D, S371L, S373P, S375F, K417N, N440K, G446S, S477N, T478K, E484A, Q493R, G496S, Q498R, N501Y, Y505H, T547K, D614G, H655Y, N679K, P681H, N764K, D796Y, N856K, Q954H, N969K, L981F), S1-S2 cleavage site mutations (682-685GSAS), 6 stabilizing (HexaPro) mutations (F817P, A892P, A899P, A942P, K986P, V987P), and T4 trimerization domain as well as a C-terminal His tag.
Expression System	HEK293 cells
Purity	> 95%
Conjugation	Unconjugated
Note	For <i>In vitro</i> laboratory use only. Not for any clinical, therapeutic, or diagnostic use in humans or animals. Not for animal or human consumption.

DATA IMAGES

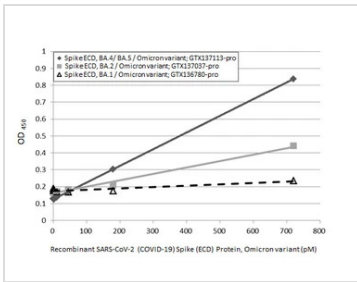


GTX136780-pro Binding Assay Image

Functional ELISA analysis of immobilized recombinant Spike ECD protein(s) derived from different strains of SARS-CoV-2 virus (ie, Wild type; BA.1 Omicron variant; BA.2 Omicron variant; BA.4/BA.5 Omicron variant) (coated at 2 µg/mL) binding to soluble recombinant Human ACE2 (ECD) protein, mouse IgG Fc tag (active) (GTX135683-pro) (0.16-117.19 nM). Bound protein was detected by Goat Anti-Mouse IgG antibody (HRP) (GTX213111-01) (1:10000).



For full product information, images and publications, please visit our [website](https://www.genetex.com).

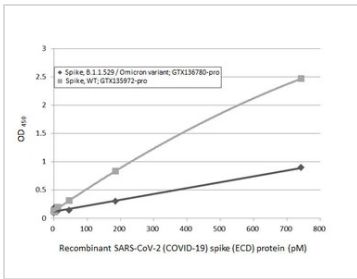


GTx136780-pro ELISA Image

Sandwich ELISA detection of recombinant Spike ECD protein(s) derived from different strains of SARS-CoV-2 virus (ie, BA.1 Omicron variant; BA.2 Omicron variant; BA.4/BA.5 Omicron variant) using antibodies as below.

Capture: SARS-CoV-2 (COVID-19) Spike RBD antibody [HL1014] (GTx635807) (5 µg/mL)

Detection: SARS-CoV-2 (COVID-19) Spike RBD antibody [HL1004] (HRP) (GTx635793-01) (1 µg/mL)

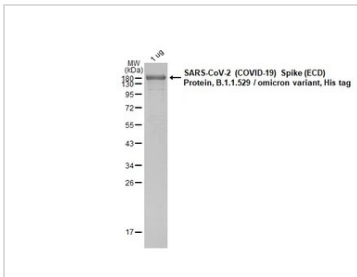


GTx136780-pro ELISA Image

Sandwich ELISA detection of recombinant Spike ECD protein(s) derived from different strains of SARS-CoV-2 virus (ie, Wild type; B.1.1.529 Omicron variant) using antibodies as below.

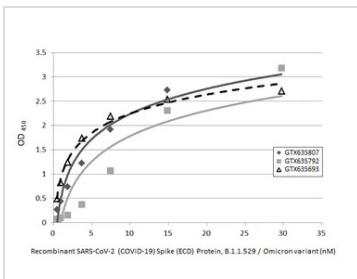
Capture: SARS-CoV-2 (COVID-19) Spike RBD antibody [HL1014] (GTx635807) (5 µg/mL)

Detection: SARS-CoV-2 (COVID-19) Spike RBD antibody [HL1003] (HRP) (GTx635792-01) (1 µg/mL)



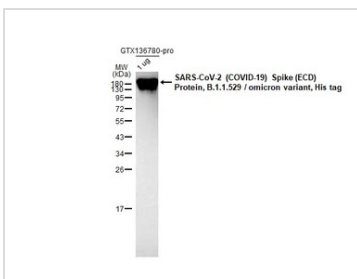
GTx136780-pro Image

GTx136780-pro SARS-CoV-2 (COVID-19) Spike (ECD) Protein, B.1.1.529 / omicron variant, His tag protein were analyzed using SDS-PAGE and stained with coomassie blue and captured by monochrome camera.



GTx136780-pro ELISA Image

Indirect ELISA analysis performed by coating plate with recombinant SARS-CoV-2 (COVID-19) Spike (ECD) Protein, B.1.1.529 / Omicron variant, His tag (GTx136780-pro) (29.71-0.46 nM). Coated protein was probed with SARS-CoV-2 (COVID-19) Spike RBD antibody [HL1014] (GTx635807), SARS-CoV-2 (COVID-19) Spike RBD antibody [HL1003] (GTx635792), and SARS-CoV-2 (COVID-19) Spike S2 antibody [HL237] (GTx635693) (1 µg/mL). Goat anti-rabbit IgG antibody (HRP) (GTx213110-01) (1:10000) was used to detect bound primary antibody.



GTx136780-pro WB Image

SARS-CoV-2 (COVID-19) Spike (ECD) Protein, B.1.1.529 / omicron variant, His tag (1 µg, GTx136780-pro) were separated by 12% SDS-PAGE, and the membrane was blotted with SARS-CoV-2 (COVID-19) Spike RBD antibody [HL257] (GTx635692) diluted at 1:5000. The HRP-conjugated anti-rabbit IgG antibody (GTx213110-01) was used to detect the primary antibody.



For full product information, images and publications, please visit our [website](https://www.genetex.com).