

Psoriasin antibody [47C1068]

Cat. No. GTX13680

Host	Mouse
Clonality	Monoclonal
Isotype	IgG1
Applications	WB, ICC/IF, IHC-P, IHC-Fr, FCM, IP
Reactivity	Human

Package
100 µg

Applications

Application Note

*Optimal dilutions/concentrations should be determined by the researcher.

Suggested dilution	Recommended dilution
WB	1 - 3 µg/ml
ICC/IF	Assay dependent
IHC-P	Assay dependent
IHC-Fr	Assay dependent
FCM	Assay dependent
IP	Assay dependent

Not tested in other applications.

Calculated MW 11 kDa. ([Note](#))

Properties

Form	Liquid
Buffer	PBS
Preservative	0.05% Sodium azide
Storage	Store as concentrated solution. Centrifuge briefly prior to opening vial. For short-term storage (1-2 weeks), store at 4°C. For long-term storage, aliquot and store at -20°C or below. Avoid multiple freeze-thaw cycles.
Concentration	1 mg/ml (Please refer to the vial label for the specific concentration.)
Immunogen	This antibody was developed against recombinant psoriasin/HID-5 protein.
Purification	Protein G purified
Conjugation	Unconjugated



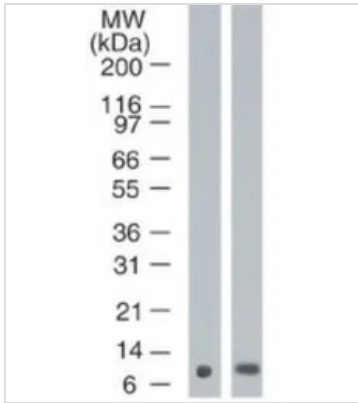
For full product information, images and publications, please visit our [website](#).

For laboratory research use only. Not for any clinical, therapeutic, or diagnostic use in humans or animals. Not for animal or human consumption.

Note

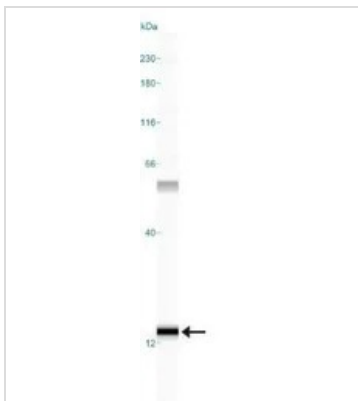
Purchasers shall not, and agree not to enable third parties to, analyze, copy, reverse engineer or otherwise attempt to determine the structure or sequence of the product.

DATA IMAGES



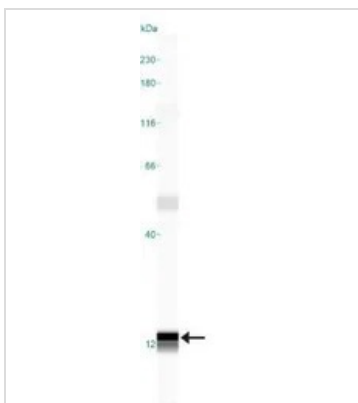
GTX13680 WB Image

WB analysis of (A) MCF-10a and (B) MCF-7 cell lysate using GTX13680 Psoriasin antibody [47C1068].
Dilution : 1 µg/ml



GTX13680 WB Image

WB analysis of MCF-7 cell lysate using GTX13680 Psoriasin antibody [47C1068].



GTX13680 WB Image

WB analysis of MCF-7 cell lysate using GTX13680 Psoriasin antibody [47C1068].



For full product information, images and publications, please visit our [website](https://www.genetex.com).