

PUMA antibody

Cat. No. GTX13689

Host	Rabbit
Clonality	Polyclonal
Isotype	IgG
Applications	WB
Reactivity	Human, Mouse

Package
200 µl

Applications

Application Note

*Optimal dilutions/concentrations should be determined by the researcher.

Suggested dilution	Recommended dilution
WB	2 - 5 µg/ml

Not tested in other applications.

Product Note

The amino acid sequence used as immunogen has 100% identity in PUMAd and PUMAg, and 59% identity in PUMAA. For additional information on PUMA isoforms and their sequences, see Nakano et al. 2001.

Properties

Form	Liquid
Buffer	PBS, 0.05% BSA
Preservative	0.05% Sodium azide
Storage	Store as concentrated solution. Centrifuge briefly prior to opening vial. For short-term storage (1-2 weeks), store at 4°C. For long-term storage, aliquot and store at -20°C or below. Avoid multiple freeze-thaw cycles.
Concentration	0.5 mg/ml (Please refer to the vial label for the specific concentration.)
Immunogen	A synthetic peptide (AAPPLLEGPVQSHHGTP) corresponding to amino acids 36-53 of human PUMA d (GenBank no. gb AAK39544.1 AF354656_1) and amino acids 196-213 of human PUMA g (GenBank no ref NP_001120712.1) was used as the immunogen.
Purification	Protein G purified
Conjugation	Unconjugated

Note

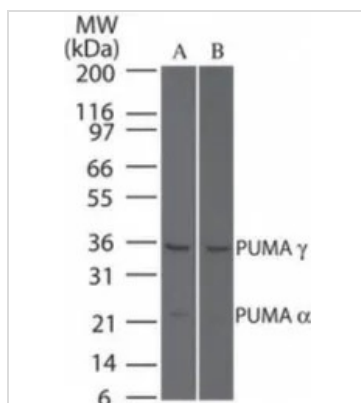
For laboratory research use only. Not for any clinical, therapeutic, or diagnostic use in humans or animals. Not for animal or human consumption.

Purchasers shall not, and agree not to enable third parties to, analyze, copy, reverse engineer or otherwise attempt to determine the structure or sequence of the product.



For full product information, images and publications, please visit our [website](#).

DATA IMAGES



GTX13689 WB Image

WB analysis of (A) HeLa and (B) NIH-3T3 cell lysate using GTX13689 PUMA antibody.

Dilution : 5 µg/ml



For full product information, images and publications, please visit our [website](#).