

## SARS-CoV-2 (COVID-19) Spike RBD Protein, Omicron / BA.2 variant, His tag

**Cat. No. GTX136905-pro****Applications** WB, ELISA, Sandwich ELISA**Species** SARS Coronavirus 2**References** ( 3 )**Package**

100 µg

## Applications

## Application Note

Recommended antibody pairs for sandwich ELISA:

Capture : GTX635807, Detection : GTX635792-01.

## Properties

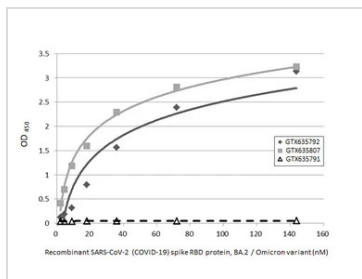
**Form** Lyophilized powder**Buffer** Reconstitute with distilled water to 0.1 mg/ml. Lyophilized from PBS.**Preservative** No preservatives**Storage** Store at 4°C or below. After reconstitution, keep as concentrated solution. Aliquot and store at -20°C or below. Avoid multiple freeze-thaw cycles. For long-term storage after reconstitution, aliquot and store at -70°C or below. Do not vortex.**Region/Sequence** SARS-CoV-2 Spike RBD of QHD43416.1 (319-541 a.a) with G339D, S371F, S373P, S375F, T376A, D405N, R408S, K417N, N440K, S477N, T478K, E484A, Q493R, Q498R, N501Y, Y505H mutations, and His tag at the C-terminus**Expression System** HEK293 cells**Purity** > 95%**Conjugation** Unconjugated

## Note

For laboratory research use only. Not for any clinical, therapeutic, or diagnostic use in humans or animals. Not for animal or human consumption.

Purchasers shall not, and agree not to enable third parties to, analyze, copy, reverse engineer or otherwise attempt to determine the structure or sequence of the product.

## DATA IMAGES

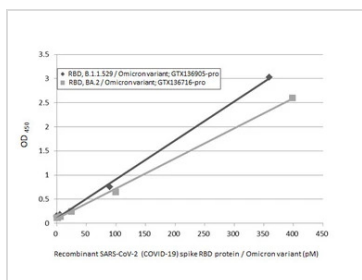


## GTX136905-pro ELISA Image

Indirect ELISA analysis performed by coating plate with recombinant SARS-CoV-2 (COVID-19) Spike RBD Protein, BA.2 / Omicron variant, His tag (GTX136905-pro) (143.73-2.25 nM). Coated protein was probed with SARS-CoV-2 (COVID-19) Spike RBD antibody [HL1003] (GTX635792), SARS-CoV-2 (COVID-19) Spike RBD antibody [HL1014] (GTX635807), and SARS-CoV-2 (COVID-19) Spike RBD antibody [HL1002] (GTX635791) (1 µg/mL). Goat anti-rabbit IgG antibody (HRP) (GTX213110-01) (1:10000) was used to detect bound primary antibody.



For full product information, images and publications, please visit our [website](#).

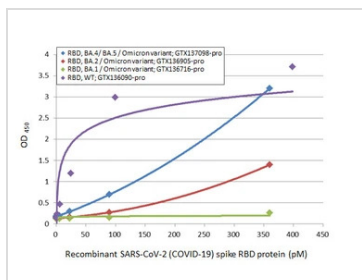


### GTX136905-pro ELISA Image

Sandwich ELISA detection of recombinant Spike RBD Protein(s) derived from different strains of SARS-CoV-2 virus (ie., B.1.1.529 Omicron variant; BA.2 Omicron variant) using antibodies as below.

**Capture:** SARS-CoV-2 (COVID-19) Spike RBD antibody [HL1014] (GTX635807) (5 µg/mL)

**Detection:** SARS-CoV-2 (COVID-19) Spike RBD antibody [HL1003] (HRP) (GTX635792-01) (1 µg/mL)

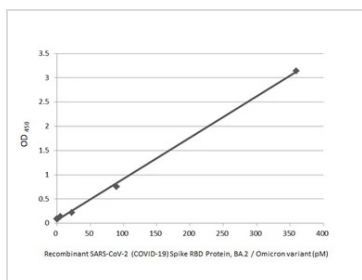


### GTX136905-pro ELISA Image

Sandwich ELISA detection of recombinant Spike RBD Protein(s) derived from different strains of SARS-CoV-2 virus (ie., Wild type; BA.1 Omicron variant; BA.2 Omicron variant; BA.4/ BA.5 Omicron variant) using antibodies as below.

**Capture:** SARS-CoV-2 (COVID-19) Spike RBD antibody [HL1014] (GTX635807) (5 µg/mL)

**Detection:** SARS-CoV-2 (COVID-19) Spike RBD antibody [HL1004] (HRP) (GTX635793-01) (1 µg/mL)

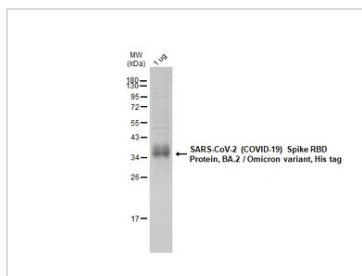


### GTX136905-pro ELISA Image

Sandwich ELISA detection of recombinant SARS-CoV-2 (COVID-19) Spike RBD Protein, BA.2 / Omicron variant, His tag (GTX136905-pro) using antibodies as below.

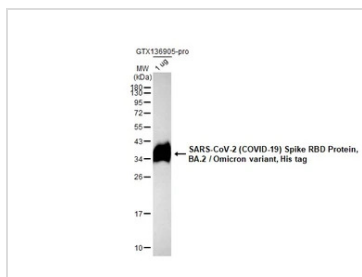
**Capture:** SARS-CoV-2 (COVID-19) Spike RBD antibody [HL1014] (GTX635807) (5 µg/mL)

**Detection:** SARS-CoV-2 (COVID-19) Spike RBD antibody [HL1003] (HRP) (GTX635792-01) (1 µg/mL)



### GTX136905-pro Image

GTX136905-pro SARS-CoV-2 (COVID-19) Spike RBD Protein, BA.2 / Omicron variant, His tag protein was analyzed using SDS-PAGE and stained with coomassie blue and captured by monochrome camera.



### GTX136905-pro WB Image

SARS-CoV-2 (COVID-19) Spike RBD Protein, BA.2 / Omicron variant, His tag (1 µg, GTX136905-pro) was separated by 12% SDS-PAGE, and the membrane was blotted with SARS-CoV-2 (COVID-19) Spike RBD antibody [HL257] (GTX635692) diluted at 1:5000. The HRP-conjugated anti-rabbit IgG antibody (GTX213110-01) was used to detect the primary antibody.



For full product information, images and publications, please visit our [website](https://www.genetex.com).