

Porimin antibody

Cat. No. GTX13693

| | |
|---------------------|--------------|
| Host | Rabbit |
| Clonality | Polyclonal |
| Isotype | IgG |
| Applications | WB |
| Reactivity | Human, Mouse |

Package
200 µl

Applications

Application Note

*Optimal dilutions/concentrations should be determined by the researcher.

| Suggested dilution | Recommended dilution |
|-----------------------------------|----------------------|
| WB | 1 - 3 µg/ml |
| Not tested in other applications. | |

Calculated MW 22 kDa. ([Note](#))

Properties

| | |
|----------------------|--|
| Form | Liquid |
| Buffer | PBS, 0.05% BSA |
| Preservative | 0.05% Sodium azide |
| Storage | Store as concentrated solution. Centrifuge briefly prior to opening vial. For short-term storage (1-2 weeks), store at 4°C. For long-term storage, aliquot and store at -20°C or below. Avoid multiple freeze-thaw cycles. |
| Concentration | 0.5 mg/ml (Please refer to the vial label for the specific concentration.) |
| Immunogen | This antibody was generated by immunizing rabbits with a synthetic peptide corresponding to amino acids 173-188 SRRGIRYRTIDEHDAI of human Porimin; GenBank no. AAG2164.1. |
| Purification | Protein G purified |
| Conjugation | Unconjugated |

Note

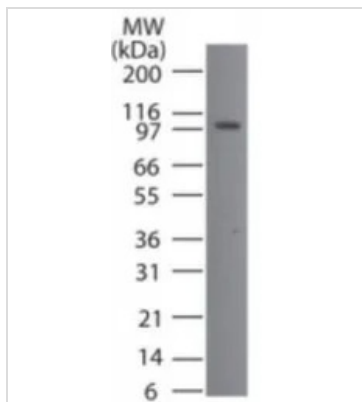
For laboratory research use only. Not for any clinical, therapeutic, or diagnostic use in humans or animals. Not for animal or human consumption.

Purchasers shall not, and agree not to enable third parties to, analyze, copy, reverse engineer or otherwise attempt to determine the structure or sequence of the product.



For full product information, images and publications, please visit our [website](#).

DATA IMAGES



GTX13693 WB Image

WB analysis of HL-60 cell lysate using GTX13693 Porimin antibody.

Dilution : 2 µg/ml



For full product information, images and publications, please visit our [website](https://www.genetex.com).