

Respiratory Syncytial virus type B Nucleoprotein, DDDDK tag

Cat. No. GTX136931-pro

Applications	WB, ELISA, Lateral Flow, Sandwich ELISA
Species	Respiratory syncytial virus type B

Package
100 µg

Applications

Application Note

Recommended antibody pairs for Sandwich ELISA:

Capture : GTX636650 / GTX636649, Detection : GTX636648 or Capture : GTX636647, Detection : GTX636705

Recommended antibody pairs for Lateral Flow:

Capture : GTX638184 / GTX636649, Detection : GTX638186

Properties

Form	Liquid
Buffer	90mM Tris, 1M Arginine
Preservative	No preservatives
Storage	Store as concentrated solution. Centrifuge briefly prior to opening vial. Aliquot and store at -20°C or below. Avoid multiple freeze-thaw cycles. For long-term storage after reconstitution, aliquot and store at -70°C or below. Do not vortex.
Concentration	0.45 mg/ml (Please refer to the vial label for the specific concentration.)
Region/Sequence	Full length Respiratory Syncytial virus type B Nucleoprotein with a C-terminal DDDDK tag (strain B1).
Expression System	HEK293 cells
Purity	>95%
Conjugation	Unconjugated

Note

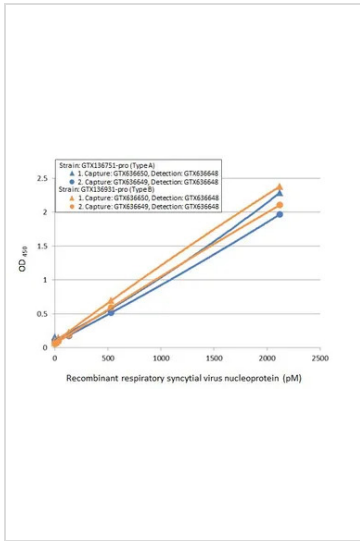
For laboratory research use only. Not for any clinical, therapeutic, or diagnostic use in humans or animals. Not for animal or human consumption.

Purchasers shall not, and agree not to enable third parties to, analyze, copy, reverse engineer or otherwise attempt to determine the structure or sequence of the product.



For full product information, images and publications, please visit our [website](#).

DATA IMAGES



GTX136931-pro ELISA Image

Sandwich ELISA of recombinant nucleoproteins (NP) derived from different strains of respiratory syncytial virus (i.e., type A; type B) using ELISA pairs below.

Pair 1:

Capture: Respiratory Syncytial virus Nucleoprotein antibody [HL1248] (GTX636650) (5 µg/mL)

Detection: Respiratory Syncytial virus Nucleoprotein antibody [HL1246] (GTX636648) conjugated with HRP (1 µg/mL)

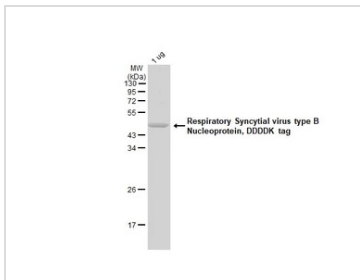
Pair 2:

Capture: Respiratory Syncytial virus Nucleoprotein antibody [HL1247] (GTX636649) (5 µg/mL)

Detection: Respiratory Syncytial virus Nucleoprotein antibody [HL1246] (GTX636648) conjugated with HRP (1 µg/mL)

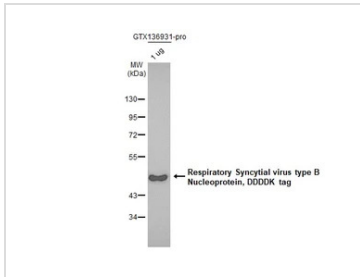
Please notice that detection antibodies need to be conjugated to HRP to function when paired with capture one.

Please contact us for custom HRP-conjugated antibody.



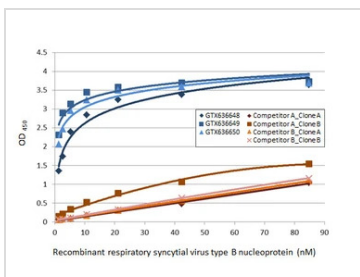
GTX136931-pro Image

GTX136931-pro Respiratory Syncytial virus type B Nucleoprotein, DDDDK tag protein were analyzed using SDS-PAGE and stained with coomassie blue and captured by monochrome camera.



GTX136931-pro WB Image

Respiratory Syncytial virus type B Nucleoprotein, DDDDK tag (1 µg, GTX136931-pro) were separated by 12% SDS-PAGE, and the membrane was blotted with DDDDK tag antibody [GT1216] (GTX636630) diluted at 1:500. The HRP-conjugated anti-rabbit IgG antibody (GTX213110-01) was used to detect the primary antibody.



GTX136931-pro ELISA Image

Indirect ELISA analysis was performed by coating the plate with recombinant Respiratory Syncytial virus type B Nucleoprotein, DDDDK tag (GTX136931-pro) (84.76-1.32 nM). Coated protein was probed with the specified respiratory syncytial virus nucleoprotein antibodies (1 µg/mL). Goat anti-rabbit IgG antibody (HRP) (GTX213110-01) (1:10000) or goat anti-mouse IgG antibody (HRP) (GTX213111-01) (1:10000) were used to detect the bound primary antibodies.



For full product information, images and publications, please visit our [website](#).