

## SARS-CoV-2 (COVID-19) Spike (ECD) Protein, Omicron / BA.2 variant, His tag

**Cat. No. GTX137037-pro**

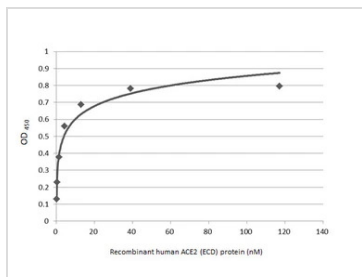
<b>Application</b>	Binding Assay, WB, ELISA, Sandwich ELISA
<b>Species</b>	SARS Coronavirus 2

**Package**  
100 µg

## PROPERTIES

<b>Form</b>	Liquid
<b>Buffer</b>	PBS
<b>Preservative</b>	No preservative
<b>Storage</b>	Store as concentrated solution. Centrifuge briefly prior to opening vial. Aliquot and store at -20°C or below. Avoid multiple freeze-thaw cycles. For long-term storage after reconstitution, aliquot and store at -70°C or below. Do not vortex.
<b>Concentration</b>	0.2 mg/ml (Please refer to the vial label for the specific concentration.)
<b>Region/Sequence</b>	SARS-CoV-2 Spike of QHD43416.1 (1-1213 a.a, extracellular domain) with Omicron variant (BA.1 / B.1.1.529) mutations (T19I, L24del, P25del, P26del, A27S, G142D, V213G, G339D, S371F, S373P, S375F, T376A, D405N, R408S, K417N, N440K, S477N, T478K, E484A, Q493R, Q498R, N501Y, Y505H, D614G, H655Y, N679K, P681H, N764K, D796Y, Q954H, N969K), and T4 trimerization domain as well as a C-terminal His tag.
<b>Expression System</b>	HEK293 cells
<b>Purity</b>	>95%
<b>Conjugation</b>	Unconjugated
<b>Note</b>	For <i>In vitro</i> laboratory use only. Not for any clinical, therapeutic, or diagnostic use in humans or animals. Not for animal or human consumption.

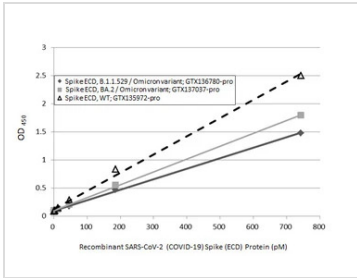
## DATA IMAGES

**GTX137037-pro Binding Assay Image**

Functional ELISA analysis of immobilized recombinant SARS-CoV-2 (COVID-19) Spike (ECD) Protein, BA.2 / Omicron variant, His tag (GTX137037-pro) (coated at 2 µg/mL) binding to soluble recombinant Human ACE2 (ECD) protein, mouse IgG Fc tag (active) (GTX135683-pro) (0.16-117.19 nM). Bound protein was detected by Goat Anti-Mouse IgG antibody (HRP) (GTX213111-01) (1:10000).



For full product information, images and publications, please visit our [website](#).

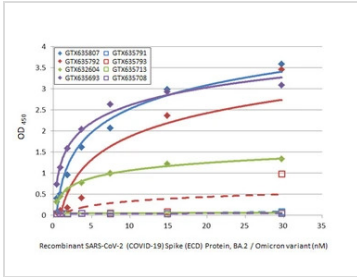


### GTX137037-pro ELISA Image

Sandwich ELISA detection of recombinant Spike ECD protein(s) derived from different strains of SARS-CoV-2 virus (ie., Wild type; B.1.1.529 Omicron variant; BA.2 Omicron variant) using antibodies as below.

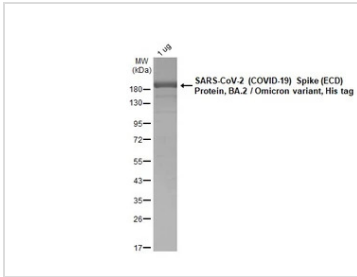
**Capture:** SARS-CoV-2 (COVID-19) Spike RBD antibody [HL1014] (GTX635807) (5 µg/mL)

**Detection:** SARS-CoV-2 (COVID-19) Spike RBD antibody [HL1003] (HRP) (GTX635792-01) (1 µg/mL)



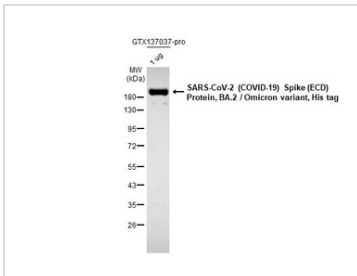
### GTX137037-pro ELISA Image

Indirect ELISA analysis was performed by coating the plate with recombinant SARS-CoV-2 (COVID-19) Spike (ECD) Protein, BA.2 / Omicron variant, His tag (GTX137037-pro) (29.71-0.46 nM). Coated protein was probed with the specified SARS-CoV-2 (COVID-19) Spike antibodies (1 µg/mL). Goat anti-rabbit IgG antibody (HRP) (GTX213110-01) (1:10000) or goat anti-mouse IgG antibody (HRP) (GTX213111-01) (1:10000) were used to detect the bound primary antibodies.



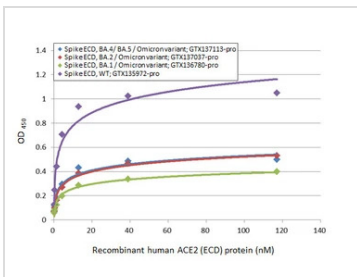
### GTX137037-pro Image

GTX137037-pro SARS-CoV-2 (COVID-19) Spike (ECD) Protein, BA.2 / Omicron variant, His tag protein were analyzed using SDS-PAGE and stained with coomassie blue and captured by monochrome camera.



### GTX137037-pro WB Image

SARS-CoV-2 (COVID-19) Spike (ECD) Protein, BA.2 / Omicron variant, His tag (1 µg, GTX137037-pro) were separated by 12% SDS-PAGE, and the membrane was blotted with SARS-CoV-2 (COVID-19) Spike RBD antibody [HL257] (GTX635692) diluted at 1:5000. The HRP-conjugated anti-rabbit IgG antibody (GTX213110-01) was used to detect the primary antibody.



### GTX137037-pro Binding Assay Image

Functional ELISA analysis of immobilized recombinant Spike ECD protein(s) derived from different strains of SARS-CoV-2 virus (ie., Wild type; BA.1 Omicron variant; BA.2 Omicron variant; BA.4/BA.5 Omicron variant) (coated at 2 µg/mL) binding to soluble recombinant Human ACE2 (ECD) protein, mouse IgG Fc tag (active) (GTX135683-pro) (0.16-117.19 nM). Bound protein was detected by Goat Anti-Mouse IgG antibody (HRP) (GTX213111-01) (1:10000).



For full product information, images and publications, please visit our [website](https://www.genetex.com).