

SARS-CoV-2 (COVID-19) Spike RBD Protein, Omicron / BA.4 / BA.5 variant, His tag

Cat. No. GTX137098-pro

Applications Binding Assay, WB, ELISA, Sandwich ELISA

Species SARS Coronavirus 2

References (3)

Package

100 µg

Applications

Application Note

Recommended antibody pairs for sandwich ELISA: Capture : GTX635807, Detection : GTX635793-01 / GTX637591.

Properties

Form Liquid

Buffer PBS

Preservative No preservatives

Storage Store as concentrated solution. Centrifuge briefly prior to opening vial. Aliquot and store at -20°C or below. Avoid multiple freeze-thaw cycles. For long-term storage after reconstitution, aliquot and store at -70°C or below. Do not vortex.

Concentration 0.4 mg/ml (Please refer to the vial label for the specific concentration.)

Region/Sequence SARS-CoV-2 Spike RBD of QHD43416.1 (319-541 a.a.) with G339D, S371F, S373P, S375F, T376A, D405N, R408S, K417N, N440K, L452R, S477N, T478K, E484A, F486V, Q498R, N501Y, Y505H and a C-terminal His tag.

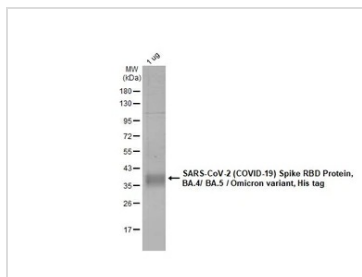
Expression System HEK293 cells

Purity >95%

Conjugation Unconjugated

Note For *In vitro* laboratory use only. Not for any clinical, therapeutic, or diagnostic use in humans or animals. Not for animal or human consumption.

DATA IMAGES

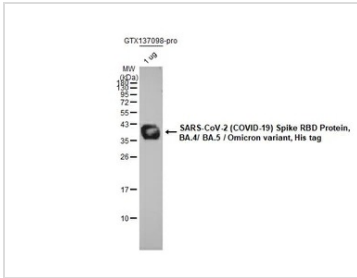


GTX137098-pro Image

GTX137098-pro SARS-CoV-2 (COVID-19) Spike RBD Protein, Omicron / BA.4 / BA.5 variant, His tag protein were analyzed using SDS-PAGE and stained with coomassie blue and captured by monochrome camera.

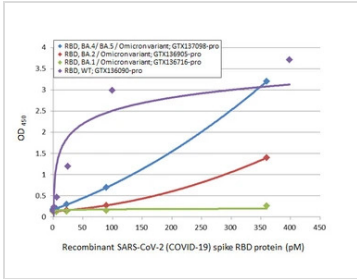


For full product information, images and publications, please visit our [website](https://www.genetex.com).



GTX137098-pro WB Image

SARS-CoV-2 (COVID-19) Spike RBD Protein, Omicron / BA.4 / BA.5 variant, His tag (1 μ g, GTX137098-pro) were separated by 12% SDS-PAGE, and the membrane was blotted with SARS-CoV-2 (COVID-19) Spike RBD antibody [HL257] (GTX635692) diluted at 1:5000. The HRP-conjugated anti-rabbit IgG antibody (GTX213110-01) was used to detect the primary antibody.

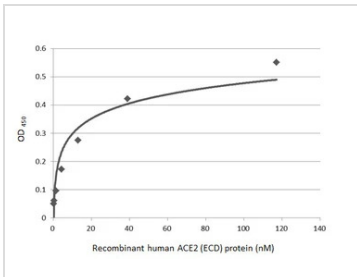


GTX137098-pro ELISA Image

Sandwich ELISA detection of recombinant Spike RBD Protein(s) derived from different strains of SARS-CoV-2 virus (ie., Wild type; BA.1 Omicron variant; BA.2 Omicron variant; BA.4/ BA.5 Omicron variant) using antibodies as below.

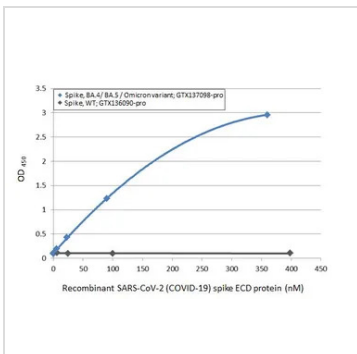
Capture: SARS-CoV-2 (COVID-19) Spike RBD antibody [HL1014] (GTX635807) (5 μ g/mL)

Detection: SARS-CoV-2 (COVID-19) Spike RBD antibody [HL1004] (HRP) (GTX635793-01) (1 μ g/mL)



GTX137098-pro Binding Assay Image

Functional ELISA analysis of immobilized recombinant SARS-CoV-2 (COVID-19) Spike RBD Protein, Omicron / BA.4 / BA.5 variant, His tag (GTX137098-pro) (coated at 2 μ g/mL) binding to soluble recombinant Human ACE2 (ECD) protein, mouse IgG Fc tag (active) (GTX135683-pro) (0.16-117.19 nM). Bound protein was detected by Goat Anti-Mouse IgG antibody (HRP) (GTX213111-01) (1:10000).



GTX137098-pro ELISA Image

Sandwich ELISA detection of recombinant Spike RBD Protein(s) derived from different strains of SARS-CoV-2 virus (ie., Wild type; BA.4/BA.5 Omicron variant) using antibodies as below.

Capture: SARS-CoV-2 (COVID-19) Spike RBD antibody [HL1014] (GTX635807) (5 μ g/mL)

Detection: HRP-conjugated SARS-CoV-2 (COVID-19) Spike RBD Omicron antibody [HL1867] (GTX637592) (1 μ g/mL)

Please notice that GTX637592 needs to be conjugated to HRP to function as the detection antibody when paired with GTX635807. Please contact us for custom HRP-conjugated antibody.



For full product information, images and publications, please visit our [website](https://www.genetex.com).