

# SARS-CoV-2 (COVID-19) Nucleocapsid protein, Omicron / BA.2 / BA.5 variant, His tag

**Cat. No. GTX137219-pro****Applications** WB, ELISA, Sandwich ELISA**Species** SARS Coronavirus 2**Package**

100 µg

## Applications

### Application Note

Recommended antibody pairs for sandwich ELISA: Capture: GTX635689, Detection: GTX635686-01, Capture: GTX635685 / GTX635689, Detection: GTX635688, or Capture: GTX635688, Detection: GTX635689. Please notice that GTX635688 / GTX635689 needs to be conjugated to HRP to function as the detection antibody when paired with GTX635685 / GTX635688. Please contact us for custom HRP-conjugated antibody.

## Properties

**Form** Liquid**Buffer** Tris, 500mM NaCl**Preservative** No preservatives**Storage** Store as concentrated solution. Centrifuge briefly prior to opening vial. Aliquot and store at -20°C or below. Avoid multiple freeze-thaw cycles. For long-term storage after reconstitution, aliquot and store at -70°C or below. Do not vortex.**Concentration** 0.3 mg/ml (Please refer to the vial label for the specific concentration.)**Region/Sequence** SARS-CoV-2 (COVID-19) Nucleocapsid protein of QHD43423.2 with Omicron variant BA.2 / BA.5 mutations (P13L, E31del, R32del, S33del, G204R, R203K, S413R) as well as a C-terminal His tag.**Expression System** HEK293 cells**Purity** >95%**Conjugation** Unconjugated

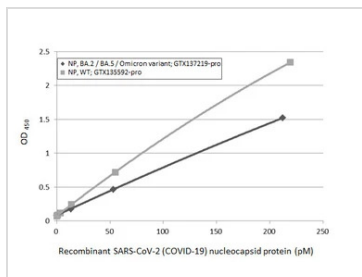
### Note

For laboratory research use only. Not for any clinical, therapeutic, or diagnostic use in humans or animals. Not for animal or human consumption.

Purchasers shall not, and agree not to enable third parties to, analyze, copy, reverse engineer or otherwise attempt to determine the structure or sequence of the product.



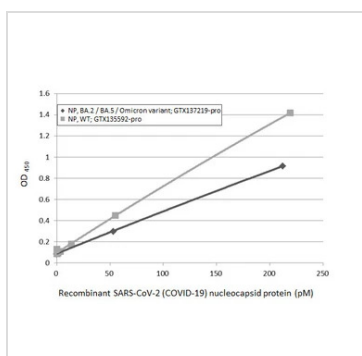
For full product information, images and publications, please visit our [website](#).

**DATA IMAGES**

**GTx137219-pro ELISA Image**

Sandwich ELISA detection of recombinant nucleocapsid protein(s) derived from different strains of SARS-CoV-2 virus (ie., Wild type; BA.2 / BA.5 Omicron variant) using antibodies as below.

**Capture:** SARS-CoV-2 (COVID-19) nucleocapsid antibody [HL511] (GTx635689) (5 µg/mL)

**Detection:** SARS-CoV-2 (COVID-19) nucleocapsid antibody [HL448] (HRP) (GTx635686-01) (1 µg/mL)

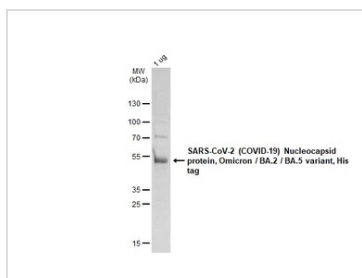

**GTx137219-pro ELISA Image**

Sandwich ELISA detection of recombinant nucleocapsid protein(s) derived from different strains of SARS-CoV-2 virus (ie., Wild type; BA.2 / BA.5 Omicron variant) using antibodies as below.

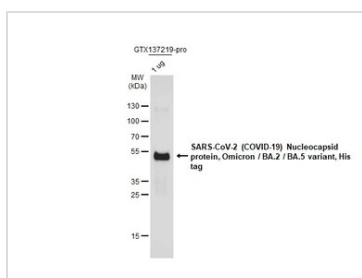
**Capture:** SARS-CoV-2 (COVID-19) nucleocapsid antibody [HL5410] (GTx635685) (5 µg/mL)

**Detection:** HRP-conjugated SARS-CoV-2 (COVID-19) nucleocapsid antibody [HL455] (GTx635688) (1 µg/mL)

Please notice that GTx635688 needs to be conjugated to HRP to function as the detection antibody when paired with GTx635685. Please contact us for custom HRP-conjugated antibody.


**GTx137219-pro Image**

GTx137219-pro SARS-CoV-2 (COVID-19) Nucleocapsid protein, Omicron / BA.2 / BA.5 variant, His tag protein were analyzed using SDS-PAGE and stained with coomassie blue and captured by monochrome camera.


**GTx137219-pro WB Image**

SARS-CoV-2 (COVID-19) Nucleocapsid protein, Omicron / BA.2 / BA.5 variant, His tag (1 µg, GTx137219-pro) were separated by 12% SDS-PAGE, and the membrane was blotted with 6x His Tag antibody [GT636] (GTx636472) diluted at 1:5000. The HRP-conjugated anti-rabbit IgG antibody (GTx213110-01) was used to detect the primary antibody.



For full product information, images and publications, please visit our [website](https://www.genetex.com).