

TLR7 antibody

Cat. No. GTX13722

Host	Rabbit
Clonality	Polyclonal
Isotype	IgG
Applications	WB, IHC-P
Reactivity	Human, Mouse

Package
100 µl

Applications

Application Note

*Optimal dilutions/concentrations should be determined by the researcher.

Suggested dilution	Recommended dilution
WB	1:500 - 1:1000
IHC-P	1:100

Not tested in other applications.

Calculated MW 121 kDa. ([Note](#))

Properties

Form	Liquid
Buffer	PBS
Preservative	0.05% Sodium azide
Storage	Store as concentrated solution. Centrifuge briefly prior to opening vial. For short-term storage (1-2 weeks), store at 4°C. For long-term storage, aliquot and store at -20°C or below. Avoid multiple freeze-thaw cycles.
Concentration	0.5 mg/ml (Please refer to the vial label for the specific concentration.)
Immunogen	This antibody was developed against KLH-conjugated synthetic peptide corresponding to amino acids 465-483 of human TLR7.
Purification	Protein G purified
Conjugation	Unconjugated

Note

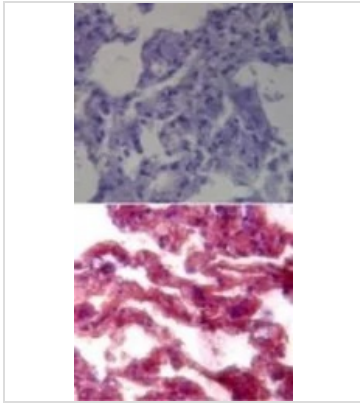
For laboratory research use only. Not for any clinical, therapeutic, or diagnostic use in humans or animals. Not for animal or human consumption.

Purchasers shall not, and agree not to enable third parties to, analyze, copy, reverse engineer or otherwise attempt to determine the structure or sequence of the product.



For full product information, images and publications, please visit our [website](#).

DATA IMAGES



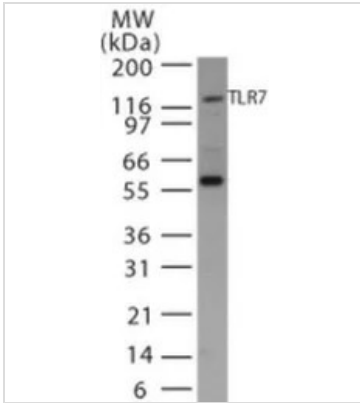
GTX13722 IHC-P Image

IHC-P analysis of human lung tissue using GTX13722 TLR7 antibody.

TOP : isotype control

Bottom : primary antibody

Dilution : 1:100



GTX13722 WB Image

WB analysis of Ramos cell lysate using GTX13722 TLR7 antibody.

Dilution : 1:500



For full product information, images and publications, please visit our [website](#).