

## SMAD6 antibody

Cat. No. GTX13727

Host	Rabbit
Clonality	Polyclonal
Isotype	IgG
Applications	WB, ICC/IF, IHC-P
Reactivity	Human, Mouse, Rat, Sheep, Primate

**Package**  
100 µg

## Applications

## Application Note

\*Optimal dilutions/concentrations should be determined by the researcher.

Suggested dilution	Recommended dilution
WB	0.5 - 2 µg/ml
ICC/IF	1 - 5 µg/ml
IHC-P	5 - 10 µg/ml

Not tested in other applications.

**Calculated MW** 53 kDa. ( [Note](#) )

## Properties

Form	Liquid
Buffer	PBS
Preservative	0.05% Sodium azide
Storage	Store as concentrated solution. Centrifuge briefly prior to opening vial. For short-term storage (1-2 weeks), store at 4°C. For long-term storage, aliquot and store at -20°C or below. Avoid multiple freeze-thaw cycles.
Concentration	1 mg/ml (Please refer to the vial label for the specific concentration.)
Immunogen	This antibody was developed against 2 synthetic peptides found between amino acids 30-150 and 300-400 of human SMAD6 (GenBank Accession No. AAH12986.1). These peptide sequences are specific to SMAD6, and have high homology to SMAD6 in multiple species.
Purification	Protein G purified
Conjugation	Unconjugated



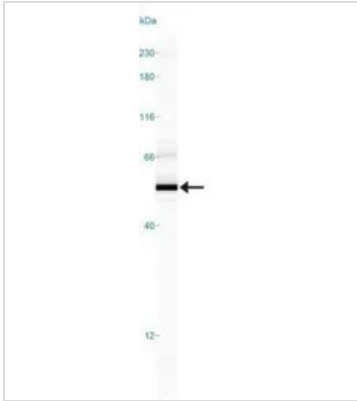
For full product information, images and publications, please visit our [website](#).

Date 2025 / 12 / 27 Page 1 of 2

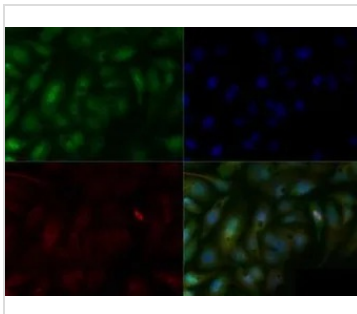
For laboratory research use only. Not for any clinical, therapeutic, or diagnostic use in humans or animals. Not for animal or human consumption.

**Note**

Purchasers shall not, and agree not to enable third parties to, analyze, copy, reverse engineer or otherwise attempt to determine the structure or sequence of the product.

**DATA IMAGES**

**GTx13727 WB Image**

WB analysis of HepG2 cell lysate using GTx13727 SMAD6 antibody.


**GTx13727 ICC/IF Image**

ICC/IF analysis of HepG2 cells using GTx13727 SMAD6 antibody.

Green : primary antibody

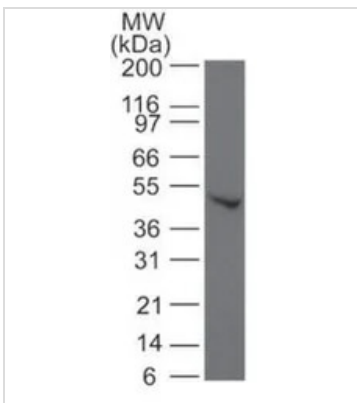
Red : Tubulin

Blue : DAPI

Dilution : 1:100

Fixation : 10% formalin

Permibilization : 0.5% Triton-X100


**GTx13727 WB Image**

WB analysis of Jurkat cell lysate using GTx13727 SMAD6 antibody.

Dilution : 2 µg/ml



For full product information, images and publications, please visit our [website](https://www.genetex.com).