

TLR7 antibody

Cat. No. GTX13730

Host	Rabbit
Clonality	Polyclonal
Isotype	IgG
Application	WB, ICC/IF, IHC-P, IHC-Fr, FACS
Reactivity	Human, Mouse, Rat

Package

50 µg

APPLICATION

Application Note

*Optimal dilutions/concentrations should be determined by the researcher.

Suggested dilution	Recommended dilution
WB	1 - 3 µg/ml
ICC/IF	1:5 - 1:1000
IHC-P	Assay dependent
IHC-Fr	1:5 - 1:1000
FACS	2 - 5 µg / 10 ⁶ cells

Not tested in other applications.

Calculated MW 121 kDa. ([Note](#))

PROPERTIES

Form	Liquid
Buffer	PBS
Preservative	0.05% Sodium azide
Storage	Store as concentrated solution. Centrifuge briefly prior to opening vial. For short-term storage (1-2 weeks), store at 4°C. For long-term storage, aliquot and store at -20°C or below. Avoid multiple freeze-thaw cycles.
Concentration	1 mg/ml (Please refer to the vial label for the specific concentration.)
Immunogen	This antibody was developed against KLH-conjugated synthetic peptide corresponding to amino acids 706-749 of human TLR7; GenBank no. gb AAF78035.1 AF245702_1. It will cross-react with mouse TLR7. In human Ramos cells, additional bands are seen.
Purification	Protein G purified
Conjugation	Unconjugated

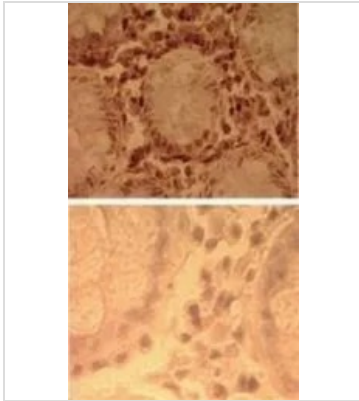


For full product information, images and publications, please visit our [website](#).

For laboratory research use only. Not for any clinical, therapeutic, or diagnostic use in humans or animals. Not for animal or human consumption.

Note

Purchasers shall not, and agree not to enable third parties to, analyze, copy, reverse engineer or otherwise attempt to determine the structure or sequence of the product.

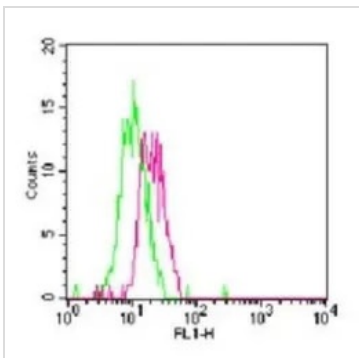
DATA IMAGES

GTX13730 IHC-P Image

IHC-P analysis of human colon tissue using GTX13730 TLR7 antibody.

TOP : primary antibody

Bottom : isotype control

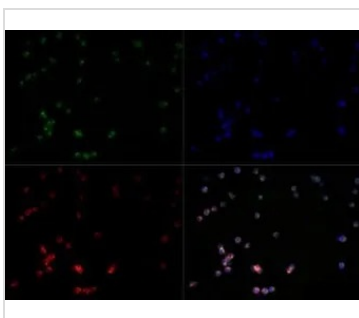
Dilution : 5 µg/ml


GTX13730 FACS Image

FACS analysis of mouse splenocytes using GTX13730 TLR7 antibody.

Red : primary antibody

Green : isotype control


GTX13730 ICC/IF Image

ICC/IF analysis of Ramos cells using GTX13730 TLR7 antibody.

Green : primary antibody

Red : Tubulin

Blue : DAPI

Dilution : 1:50

Fixation : 10% formalin

Permibilization : 0.5% Triton-X100



For full product information, images and publications, please visit our [website](#).