

## TLR7 antibody

Cat. No. GTX13732

Host	Rabbit
Clonality	Polyclonal
Isotype	IgG
Applications	IHC-P, IHC-Fr, FCM
Reactivity	Human, Mouse

Package  
50 µg

## Applications

## Application Note

\*Optimal dilutions/concentrations should be determined by the researcher.

Suggested dilution	Recommended dilution
IHC-P	1:10 - 1:50
IHC-Fr	1:20
FCM	0.5 - 2 µg / 10 <sup>6</sup> cells

Not tested in other applications.

## Properties

Form	Liquid
Buffer	PBS
Preservative	0.05% Sodium azide
Storage	Store as concentrated solution. Centrifuge briefly prior to opening vial. For short-term storage (1-2 weeks), store at 4°C. For long-term storage, aliquot and store at -20°C or below. Avoid multiple freeze-thaw cycles.
Concentration	1 mg/ml (Please refer to the vial label for the specific concentration.)
Immunogen	This antibody was developed against KLH-conjugated synthetic peptide corresponding to a portion of amino acids 684-701 of human TLR7 (NP_057646).
Purification	Protein G purified
Conjugation	Unconjugated

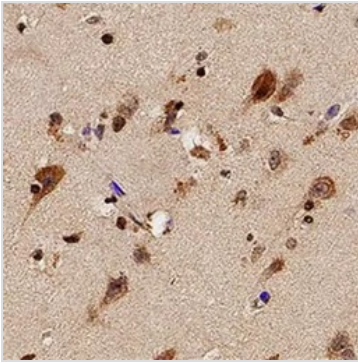
## Note

For laboratory research use only. Not for any clinical, therapeutic, or diagnostic use in humans or animals. Not for animal or human consumption.

Purchasers shall not, and agree not to enable third parties to, analyze, copy, reverse engineer or otherwise attempt to determine the structure or sequence of the product.



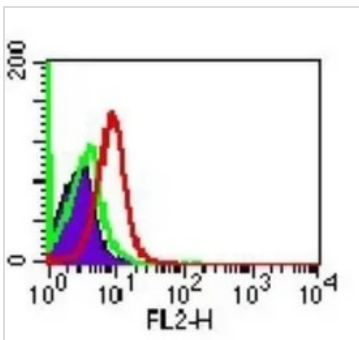
For full product information, images and publications, please visit our [website](#).

**DATA IMAGES**

**GTX13732 IHC-P Image**

IHC-P analysis of human brain tissue using GTX13732 TLR7 antibody.

Dilution : 1:20

Antigen retrieval : Heat induced antigen retrieval (HIER) using 10mM sodium citrate buffer (pH 6.0)


**GTX13732 FCM Image**

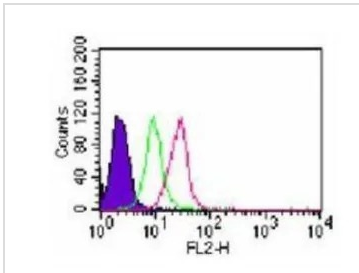
FACS analysis of human peripheral blood mononuclear cell (PBMC) using GTX13732 TLR7 antibody.

Red : Primary antibody

Green : isotype control

Shaded histogram : cell only

Dilution : 0.5  $\mu$ g/ $1 \times 10^6$  cells


**GTX13732 FCM Image**

FACS (Intracellular staining) analysis of THP-1 cells using GTX13732 TLR7 antibody.

Red : Primary antibody

Green : isotype control

Shaded histogram : cell only

Dilution : 2  $\mu$ g/ $10^6$  cells



For full product information, images and publications, please visit our [website](https://www.genetex.com).