

SARS-CoV-2 (COVID-19) Spike RBD Protein, Omicron / BA.2.75 variant, His tag

Cat. No. GTX137422-pro**Applications** Binding Assay, WB, ELISA, Sandwich ELISA**Species** SARS Coronavirus 2**Package**

100 µg

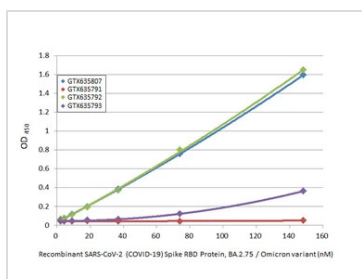
Properties

Form Liquid**Buffer** PBS**Preservative** No preservatives**Storage** Store as concentrated solution. Centrifuge briefly prior to opening vial. Aliquot and store at -20°C or below. Avoid multiple freeze-thaw cycles. For long-term storage after reconstitution, aliquot and store at -70°C or below. Do not vortex.**Concentration** 0.1 mg/ml (Please refer to the vial label for the specific concentration.)**Region/Sequence** SARS-CoV-2 Spike RBD of QHD43416.1 (319-541 a.a.) with G339H, S371F, S373P, S375F, T376A, D405N, R408S, K417N, N440K, G446S, N460K, S477N, T478K, E484A, Q498R, N501Y, Y505H and a C-terminal His tag.**Expression System** HEK293 cells**Purity** >95%**Conjugation** Unconjugated**Note**

For laboratory research use only. Not for any clinical, therapeutic, or diagnostic use in humans or animals. Not for animal or human consumption.

Purchasers shall not, and agree not to enable third parties to, analyze, copy, reverse engineer or otherwise attempt to determine the structure or sequence of the product.

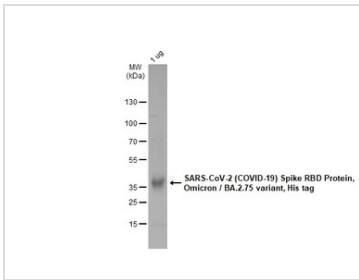
DATA IMAGES

**GTX137422-pro ELISA Image**

Indirect ELISA analysis was performed by coating the plate with recombinant SARS-CoV-2 (COVID-19) Spike RBD Protein, Omicron / BA.2.75 variant, His tag (GTX137422-pro) (148.15-2.31 nM). Coated protein was probed with the specified SARS-CoV-2 (COVID-19) Spike RBD antibodies (1 µg/mL). Goat anti-rabbit IgG antibody (HRP) (GTX213110-01) (1:10000) was used to detect the bound primary antibody.

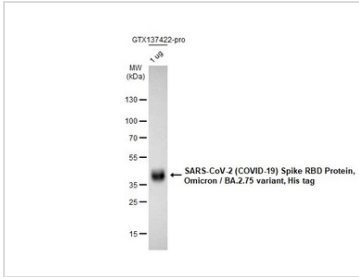


For full product information, images and publications, please visit our [website](#).



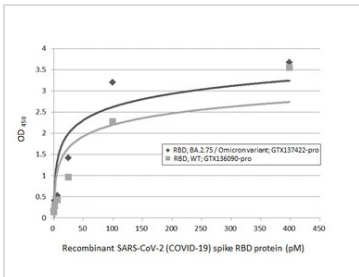
GTX137422-pro Image

GTX137422-pro SARS-CoV-2 (COVID-19) Spike RBD Protein, Omicron / BA.2.75 variant, His tag protein were analyzed using SDS-PAGE and stained with coomassie blue and captured by monochrome camera.



GTX137422-pro WB Image

SARS-CoV-2 (COVID-19) Spike RBD Protein, Omicron / BA.2.75 variant, His tag (1 µg, GTX137422-pro) were separated by 12% SDS-PAGE, and the membrane was blotted with SARS-CoV-2 (COVID-19) Spike RBD antibody [HL257] (GTX635692) diluted at 1:5000. The HRP-conjugated anti-rabbit IgG antibody (GTX213110-01) was used to detect the primary antibody.

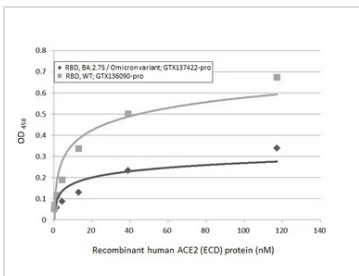


GTX137422-pro ELISA Image

Sandwich ELISA detection of recombinant Spike RBD Protein(s) derived from different strains of SARS-CoV-2 virus (ie., Wild type; BA.2.75 Omicron variant) using antibodies as below.

Capture: SARS-CoV-2 (COVID-19) Spike RBD antibody [HL1014] (GTX635807) (5 µg/mL)

Detection: SARS-CoV-2 (COVID-19) Spike RBD antibody [HL1003] (HRP) (GTX635792-01) (1 µg/mL)



GTX137422-pro Binding Assay Image

Functional ELISA analysis of immobilized recombinant Spike RBD Protein(s) derived from different strains of SARS-CoV-2 virus (ie., Wild type; BA.2.75 Omicron variant) (coated at 2 µg/mL) binding to soluble recombinant Human ACE2 (ECD) protein, mouse IgG Fc tag (active) (GTX135683-pro) (0.16-117.19 nM). Bound protein was detected by Goat Anti-Mouse IgG antibody (HRP) (GTX213111-01) (1:10000).



For full product information, images and publications, please visit our [website](#).