

CHFR antibody, C-term

Cat. No. GTX13773

Host	Goat
Clonality	Polyclonal
Isotype	IgG
Applications	IHC-P
Reactivity	Human

Package
100 µg

Applications

Application Note

*Optimal dilutions/concentrations should be determined by the researcher.

Suggested dilution	Recommended dilution
IHC-P	2.5µg/ml

Note : Human Brain (Cerebellum) shows stained Purkinje cells.

Not tested in other applications.

Product Note This antibody is expected to recognise all reported isoforms.

Properties

Form	Liquid
Buffer	TBS, 0.5% BSA
Preservative	0.02% Sodium azide
Storage	Store as concentrated solution. Centrifuge briefly prior to opening vial. For short-term storage (1-2 weeks), store at 4°C. For long-term storage, aliquot and store at -20°C or below. Avoid multiple freeze-thaw cycles.
Concentration	0.50 mg/ml (Please refer to the vial label for the specific concentration.)
Immunogen	Peptide with sequence KFNHICEQTRFKN, from the C Terminus of the protein sequence according to NP_001154816.1; NP_001154817.1; NP_001154818.1; NP_060693.2; NP_001154819.1.
Purification	Purified by ammonium sulphate precipitation followed by antigen affinity chromatography
Conjugation	Unconjugated

Note

For laboratory research use only. Not for any clinical, therapeutic, or diagnostic use in humans or animals. Not for animal or human consumption.

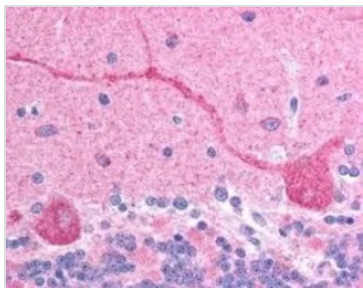
Purchasers shall not, and agree not to enable third parties to, analyze, copy, reverse engineer or otherwise attempt to determine the structure or sequence of the product.



For full product information, images and publications, please visit our [website](#).

Date 2026 / 01 / 08 Page 1 of 2

DATA IMAGES


GTX13773 IHC-P Image

IHC-P analysis of human brain (cerebellum) using GTX13773 CHFR antibody, C-term.

Antigen retrieval : citrate buffer pH 6

Dilution : 2.5µg/ml



For full product information, images and publications, please visit our [website](#).