

SARS-CoV-2 (COVID-19) Nucleocapsid protein, Omicron / BQ.1 variant, His tag

Cat. No. GTX137883-pro**Applications** ELISA, Sandwich ELISA**Species** SARS Coronavirus 2**Package**

100 µg

Applications

Application Note

Capture : GTX635688 / GTX635689, Detection : GTX635689 / GTX635686. Please notice that GTX635689 / GTX635686 needs to be conjugated to HRP to function as the detection antibody when paired with GTX635688 / GTX635689. Please contact us for custom HRP-conjugated antibody.

Properties

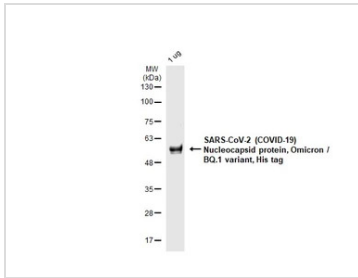
Form Liquid**Buffer** Tris, 500mM NaCl**Preservative** No preservatives**Storage** Store as concentrated solution. Centrifuge briefly prior to opening vial. Aliquot and store at -20°C or below. Avoid multiple freeze-thaw cycles. For long-term storage after reconstitution, aliquot and store at -70°C or below. Do not vortex.**Concentration** 0.2 mg/ml (Please refer to the vial label for the specific concentration.)**Region/Sequence** SARS-CoV-2 (COVID-19) Nucleocapsid protein of QHD43423.2 with Omicron variant BQ.1 mutations (P13L, E31del, R32del, E136D, G204R, R203K, S413R) as well as a C-terminal His tag**Expression System** HEK293 cells**Purity** >95%**Conjugation** Unconjugated**Note**

For laboratory research use only. Not for any clinical, therapeutic, or diagnostic use in humans or animals. Not for animal or human consumption.

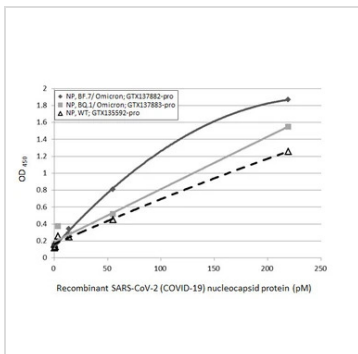
Purchasers shall not, and agree not to enable third parties to, analyze, copy, reverse engineer or otherwise attempt to determine the structure or sequence of the product.



For full product information, images and publications, please visit our [website](#).

DATA IMAGES

GTX137883-pro Image

GTX137883-pro SARS-CoV-2 (COVID-19) Nucleocapsid protein, Omicron / BQ.1 variant, His tag was analyzed using SDS-PAGE and stained with coomassie blue and captured by monochrome camera.

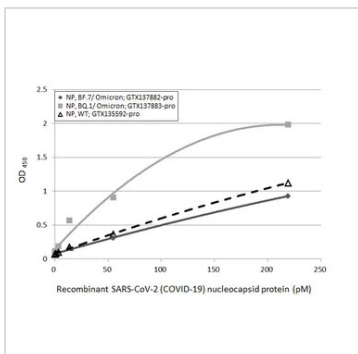

GTX137883-pro ELISA Image

Sandwich ELISA detection of recombinant nucleocapsid protein(s) derived from different strains of SARS-CoV-2 virus (ie., Wild type; BF.7 Omicron variant; BQ.1 Omicron variant) using antibodies as below.

Capture: SARS-CoV-2 (COVID-19) nucleocapsid antibody [HL5511] (GTX635689) (5 µg/mL)

Detection: HRP-conjugated SARS-CoV-2 (COVID-19) nucleocapsid antibody [HL448] (GTX635686) (1 µg/mL)

Please notice that GTX635686 needs to be conjugated to HRP to function as the detection antibody when paired with GTX635689. Please contact us for custom HRP-conjugated antibody.


GTX137883-pro ELISA Image

Sandwich ELISA detection of recombinant nucleocapsid protein(s) derived from different strains of SARS-CoV-2 virus (ie., Wild type; BF.7 Omicron variant; BQ.1 Omicron variant) using antibodies as below.

Capture: SARS-CoV-2 (COVID-19) nucleocapsid antibody [HL455] (GTX635688) (5 µg/mL)

Detection: HRP-conjugated SARS-CoV-2 (COVID-19) nucleocapsid antibody [HL5511] (GTX635689) (1 µg/mL)

Please notice that GTX635689 needs to be conjugated to HRP to function as the detection antibody when paired with GTX635688. Please contact us for custom HRP-conjugated antibody.



For full product information, images and publications, please visit our [website](https://www.genetex.com).